



Highbay 11

- Durable and reliable with up to 100,000 hours of service life
- Very robust with protection class IP65 and impact resistance IK08 with accessories as well as resistance to ambient temperatures of up to 70° C

- High visual comfort thanks to very good glare control up to UGR < 22
- Highly efficient lens-based optical system with powerful LEDs and up to 177 lm/w

- Ready for a wide range of application thanks to different sizes with lumen packages up to 64.000 lm, different light distributions and mounting options

Highbay Luminaire range

A new era of hall lighting.



Highbay 11

A new league in hall lighting.

Maximum performance in all dimensions.

- Use at ambient temperatures up to 70° C
- Long service life of up to 100,000 h
- 3,000, 4,000, 5,000 and 6,500 K
- Up to 64,000 lm for large hall heights
- Optional integrated sensors

Rated service life	70,000 h / L85 at T_{max} , 100,000 / L85 at 25° C
Luminous efficacy	up to 180 lm / W
Luminous flux	10,000 lm ... 64,000 lm
Ambient temperature	-35° C to +70° C
Colour temperature	4,000 K (3,000 K / 5,000 K / 6,500 K)
Light distribution	narrow / wide / ellipsoid
Colour rendering	CRI 80
Glare control	UGR < 22
Protection rating / Impact resistance	IP65 / IK08 with accessories
Certification	ENEC / CE
Control	DALI 2
Sensor	daylight / movement (HF / IR)
Special Features	ball-proof / IFS / LABS-free*
Accessories	optics / cover glass / mounting
Warranty	5 years

* free of paint wetting disrupting substances

Highbay 21

The professional in industry & logistics.

Made in Germany for high requirements.

- 50,000 h service life at ambient temperatures of up to 45° C
- Optimum glare control and high visual comfort with UGR < 22
- Lumen packages of 13,800 lm and 27,600 lm
- Wide range of accessories for optical system & mounting

Rated service life	50,000 h / L85 at T_{max}
Luminous efficacy	up to 161 lm / W
Luminous flux	13,800 lm ... 27,600 lm
Ambient temperature	-25° C to +45° C
Colour temperature	4,000 K (6,500 K)
Light distribution	narrow / wide / ellipsoid
Colour rendering	CRI 80
Glare control	UGR < 22
Protection rating / Impact resistance	IP65 / IK08 with accessories
Certification	ENEC / CE
Control	DALI 2
Sensor	daylight / movement (HF / IR)
Special Features	ball-proof / IFS / LABS-free*
Accessories	optics / cover glass / mounting
Warranty	5 years

* free of paint wetting disrupting substances

Highbay Luminaire family



Highbay 31

The universal talent of hall lighting.

Efficient, reliable & intelligent control.

- Robust, efficient luminaire with three lumen packages
- Good glare control due to precise lens optics
- DALI2 variants for simple controllability
- Suitable for use in the food industry (IFS)

Rated service life	50,000 h / L85 at 25° C
Luminous efficacy	150 lm / W
Luminous flux	14,000 ... 28,000 lm
Ambient temperature	-30° C to +45° C
Colour temperature	4,000 K
Light distribution	medium, wide
Colour rendering	CRI 80
Glare control	UGR < 25
Protection rating / Impact resistance	IP65 / IK08
Certification	ENEC / CE
Control	DALI2
Sensor	movement (HF)
Special Features	IFS
Accessories	reflectors / mounting bracket
Warranty	5 years



Highbay 42

The standard for simple applications.

Robust and practical.

- Simple refurbishment solution for cost-effective lighting replacement
- Multilumen for easy adjustment of the luminous flux
- Quick installation
- Reflectors as access

Rated service life	50,000 h / L80 / B50 at 25° C
Luminous efficacy	160 lm / W
Luminous flux	10,000 lm ... 28,000 lm
Ambient temperature	-20° C to +40° C
Colour temperature	4,000 K / 5,700 K
Light distribution	wide
Colour rendering	CRI 80
Glare control	UGR > 28
Protection rating / Impact resistance	IP65 / IK08
Certification	CE
Control	ON / OFF
Accessories	reflectors / mounting bracket
Warranty	5 years

Highbay 11

Highbay 11 Luminaires

Light source	Colour temperature K	Colour rendering CRI	Rated luminous flux lm	Connected load W	Luminous efficacy lm / W	Control
1 × 2 × LED	4,000	> 80	9,790	56	176	DALI
1 × 2 × LED	4,000	> 80	14,060	81	173	DALI
1 × 2 × LED	4,000	> 80	10,020	56	180	DALI
1 × 2 × LED	4,000	> 80	14,400	81	177	DALI
1 × 2 × LED	4,000	> 80	14,400	81	177	DALI
1 × 2 × LED	4,000	> 80	16,000	90	177	DALI
1 × 2 × LED	4,000	> 80	16,000	90	177	DALI
2 × 2 × LED	4,000	> 80	19,570	111	176	DALI (2 addresses)
2 × 2 × LED	4,000	> 80	28,120	162	173	DALI (2 addresses)
2 × 2 × LED	4,000	> 80	32,370	190	171	DALI (2 addresses)
2 × 2 × LED	4,000	> 80	20,050	111	180	DALI (2 addresses)
2 × 2 × LED	4,000	> 80	28,800	162	177	DALI (2 addresses)
2 × 2 × LED	4,000	> 80	33,150	190	175	DALI (2 addresses)
2 × 2 × LED	4,000	> 80	28,800	162	177	DALI (2 addresses)
2 × 2 × LED	4,000	> 80	32,370	183	177	DALI (2 addresses)
2 × 2 × LED	4,000	> 80	33,150	187	177	DALI (2 addresses)
3 × 2 × LED	4,000	> 80	48,560	284	171	DALI (3 addresses)

Highbay 11 Accessories

Description	PU	Weight kg	Order number
cover, ellipsoid distribution, PC, UV-stabilised, L = 313 mm, B = 174 mm	2 pcs.	0.5	59HL91003
cover, diffuse distribution, PC, UV-stabilised, L = 313 mm, B = 174 mm	2 pcs.	0.5	59HL91004
cover, glass, L = 313 mm, B = 174 mm	2 pcs.	0.6	59HL91001
cover, PC, UV-stabilised, L = 313 mm, B = 174 mm	2 pcs.	0.5	59HL91002
4-fold chain suspension, steel, galvanised	1 pcs.	0.5	59HL92001
2-fold chain suspension, steel, galvanised	2 pcs.	0.5	59HL92002
link chain, steel, galvanised	run. m.	0.1	5LY9001

Highbay 21

Highbay 21 Luminaires

Light source	Colour temperature K	Colour rendering CRI	Rated luminous flux lm	Connected load W	Luminous efficacy lm / W	Control
1 × 2 LED	4,000	> 80	13,470	85	158	DALI
1 × 2 LED	4,000	> 80	13,800	86	161	DALI
2 × 2 LED	4,000	> 80	26,940	171	157	DALI (2 addresses)
2 × 2 LED	4,000	> 80	27,600	171	161	DALI (2 addresses)
2 × 2 LED	6,500	> 80	26,640	171	156	DALI (2 addresses)
1 × 2 LED	4,000	> 80	13,800	86	161	DALI
2 × 2 LED	4,000	> 80	27,600	171	161	DALI (2 addresses)
2 × 2 LED	4,000	> 80	27,600	171	161	DALI (2 addresses)
2 × 2 LED	4,000	> 80	26,940	171	157	DALI (2 addresses)

ta	Weight kg	Optics	Additional information	Order number
-35 ... +70°C	4.3	narrow		51HL61D14DCA
-35 ... +55°C	4.3	narrow		51HLA1D14FCA
-35 ... +70°C	4.3	wide		51HL62D14DCA
-35 ... +55°C	4.3	wide		51HLA2D14FCA
-35 ... +55°C	4.3	wide	emergency light according to EN 60598-2-22	51HLA2D14FCAD
-35 ... +45°C	3.5	narrow	for Licross® trunking rail	51HLA1D14GLA
-35 ... +45°C	3.5	wide	for Licross® trunking rail	51HLA2D14GLA
-35 ... +70°C	8.8	narrow		51HL61D24HCA
-35 ... +55°C	8.8	narrow		51HLA1D24MCA
-35 ... +45°C	8.8	narrow		51HLA1D24NCA
-35 ... +70°C	8.8	wide		51HL62D24HCA
-35 ... +55°C	8.8	wide		51HLA2D24MCA
-35 ... +45°C	8.8	wide		51HLA2D24NCA
-35 ... +55°C	8.8	wide	emergency light according to EN 60598-2-22	51HLA2D24MCAD
-35 ... +45°C	6.5	narrow	for Licross® trunking rail	51HLA1D24NLA
-35 ... +45°C	6.5	wide	for Licross® trunking rail	51HLA2D24NLA
-35 ... +45°C	13.3	narrow		51HLA1D34SCA

Description	PU	Weight kg	Order number
4-fold wire suspension, steel, galvanised	1 pcs.	0.5	59HL92004
2-fold wire suspension, steel, galvanised	2 pcs.	0.2	59HL92005
ceiling mounting bracket, steel, galvanised, suspension height 160 mm	2 pcs.	1	59HL92006
luminaire connector, steel, galvanised	2 pcs.	1.7	59HL92007
base module, master, white	1 pcs.	0.4	59HL94001
base module, slave, white	1 pcs.	0.4	59HL94002

ta	Weight kg	Optics	Additional information	Order number
-25 ... +45°C	4.3	narrow		51HLA1D14FCB
-25 ... +45°C	4.3	wide		51HLA2D14FCB
-25 ... +45°C	8.8	narrow		51HLA1D24MCB
-25 ... +45°C	8.8	wide		51HLA2D24MCB
-25 ... +45°C	8.8	wide		51HLA2D26MCB
-25 ... +45°C	5.1	wide	ball impact resistant	51HLASD14FGB
-25 ... +45°C	11.5	wide	ball impact resistant	51HLASD24MGB
-25 ... +40°C	6.5	wide	for Licross® trunking rail	51HLA2D24MLB
-25 ... +40°C	6.5	narrow	for Licross® trunking rail	51HLA1D24MLB

Highbay 21 Accessories

Description	PU	Weight kg	Order number
cover, ellipsoid distribution, PC, UV-stabilised, L = 313 mm, B = 174 mm	2 pcs.	0.5	59HL91003
cover, diffuse distribution, PC, UV-stabilised, L = 313 mm, B = 174 mm	2 pcs.	0.5	59HL91004
cover, glass, L = 313 mm, B = 174 mm	2 pcs.	0.6	59HL91001
cover, PC, UV-stabilised, L = 313 mm, B = 174 mm	2 pcs.	0.5	59HL91002
4-fold chain suspension, steel, galvanised	1 pcs.	0.5	59HL92001
2-fold chain suspension, steel, galvanised	2 pcs.	0.5	59HL92002
link chain, steel, galvanised	run. m.	0.1	5LY9001

Highbay 31

Highbay 31 Luminaires

Light source	Colour temperature K	Colour rendering CRI	Rated luminous flux lm	Connected load W	Luminous efficacy lm / W
S	4,000	> 80	14,000	93	150
S	4,000	> 80	14,000	93	150
S	4,000	> 80	14,000	93	150
S	4,000	> 80	14,000	93	150
S	4,000	> 80	14,000	93	150
S	4,000	> 80	20,000	133	150
S	4,000	> 80	20,000	133	150
S	4,000	> 80	20,000	133	150
S	4,000	> 80	20,000	133	150
S	4,000	> 80	20,000	133	150
L	4,000	> 80	28,000	187	150
L	4,000	> 80	28,000	187	150
L	4,000	> 80	28,000	187	150
L	4,000	> 80	28,000	187	150
L	4,000	> 80	28,000	187	150

Highbay 31 Accessories

Description	Size	PU	Weight kg	Order number
mounting bracket, 329 mm	S	1 pcs.	1	59HC92001
mounting bracket, 404 mm	L	1 pcs.	1	59HC92002
link chain, steel, galvanised		run. m.	0.1	5LY9001
system connector: plug / socket, IP65, 3-pole, max. 2.5mm ²		1 pcs.	0.1	5NX30003
system connector: plug / socket, IP65, 5-pole, max. 2.5mm ²		1 pcs.	0.1	5NX30005

Highbay 42

Highbay 42 Luminaires

Light source	Colour temperature K	Colour rendering CRI	Rated luminous flux lm	Connected load W	Luminous efficacy lm / W
LED	4,000	> 80	12,800	80	160
LED	4,000	> 80	19,200	120	160
LED	4,000	> 80	10 – 28,000	63 – 175	160
LED	5,700	> 80	10 – 28,000	63 – 175	160

Highbay 42 Accessories

Description	PU	Weight kg	Order number
mounting bracket, small			59HP92001
reflector, PC			59HP91001

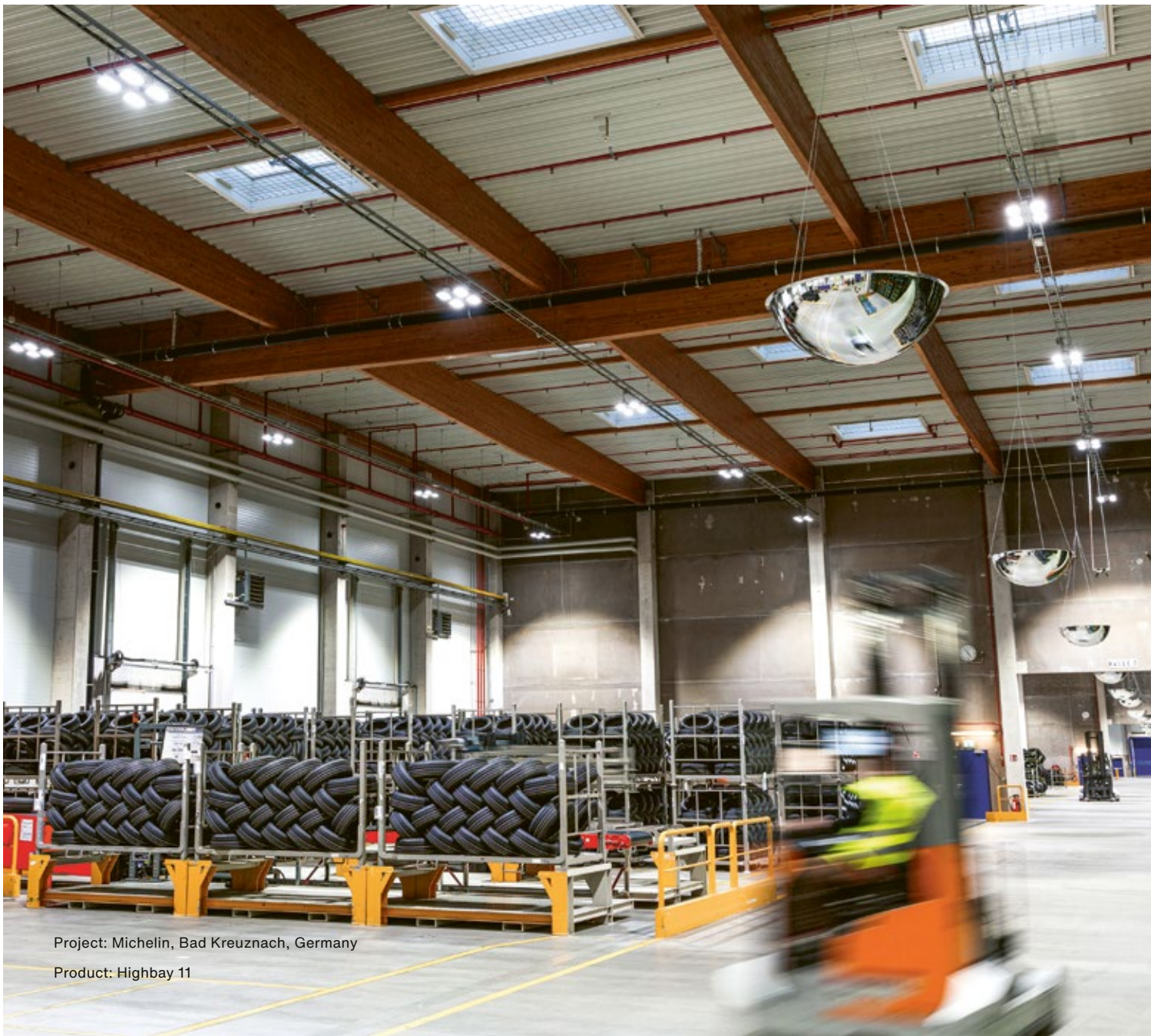
Description	PU	Weight kg	Order number
4-fold wire suspension, steel, galvanised	1 pcs.	0.5	59HL92004
2-fold wire suspension, steel, galvanised	2 pcs.	0.2	59HL92005
ceiling mounting bracket, steel, galvanised, suspension height 160 mm	2 pcs.	1	59HL92006
luminaire connector, steel, galvanised	2 pcs.	1.7	59HL92007
base module, master, white	1 pcs.	0.4	59HL94001
base module, slave, white	1 pcs.	0.4	59HL94002

Control	Sensor	ta	Weight kg	Optics	Order number
ON / OFF	no	-30 ... +45° C	3.4	medium	51HC417A4FMA
ON / OFF	no	-30 ... +45° C	3.4	wide	51HC427A4FMA
ON / OFF	yes (PIR)	-30 ... +45° C	3.4	wide	51HC427A4FMA01
DALI	no	-30 ... +45° C	3.4	medium	51HC41DA4FMA
DALI	no	-30 ... +45° C	3.4	wide	51HC42DA4FMA
ON / OFF	no	-30 ... +45° C	3.4	medium	51HC417A4JMA
ON / OFF	no	-30 ... +45° C	3.4	wide	51HC427A4JMA
ON / OFF	yes (PIR)	-30 ... +45° C	3.4	wide	51HC427A4JMA01
DALI	no	-30 ... +45° C	3.4	medium	51HC41DA4JMA
DALI	no	-30 ... +45° C	3.4	wide	51HC42DA4JMA
ON / OFF	no	-30 ... +45° C	4.2	medium	51HC417A4MMA
ON / OFF	no	-30 ... +45° C	4.2	wide	51HC427A4MMA
ON / OFF	yes (PIR)	-30 ... +45° C	4.2	wide	51HC427A4MMA01
DALI	no	-30 ... +45° C	4.2	medium	51HC41DA4MMA
DALI	no	-30 ... +45° C	4.2	wide	51HC42DA4MMA

Description	Size	PU	Weight kg	Order number
reflector, Ø 410 mm, Aluminium	S	1 pcs.	0.5	59HC91003
reflector, Ø 570 mm, Aluminium	L	1 pcs.	0.6	59HC91004
reflector, Ø 410 mm, PC	S	1 pcs.	0.7	59HC91001
reflector, Ø 570 mm, PC	L	1 pcs.	0.8	59HC91002

Control	ta	Weight kg	Optics	Order number
ON / OFF	-20 ... +40° C	2.8	wide	51HP327A4FMA
ON / OFF	-20 ... +40° C	2.8	wide	51HP327A4HMA
ON / OFF / ML	-20 ... +40° C	3.2	wide	51HP32MB4MMA
ON / OFF / ML	-20 ... +40° C	3.2	wide	51HP32MB7MMA

Description	PU	Weight kg	Order number
reflector, Aluminium			59HP91003
link chain, steel, galvanised	run. m.	0.1	5LY9001



Project: Michelin, Bad Kreuznach, Germany

Product: Highbay 11

Contact.

Siteco GmbH

Georg-Simon-Ohm-Str. 50
83301 Traunreut, Germany
Tel. +49 8669 330
info@siteco.com

[siteco.com](https://www.siteco.com)

Technical Support

Tel. +49 8669 338 44
technicalsupport@siteco.com