

## 4 - Axis - Office

Installation : Novaluna\_Pendant Mounted254\_Eldacon

Project number :  
Customer :  
Processed by : Siteco  
Date : 08.2007

Project description:  
Room dimensions L/ B/ H: 5,4/ 5,4/ 2,7 m  
Building axis 1,35 m

According to DIN EN 12 464  
Maintenance factor 0,67  
Lighting direct/ indirect

Die Ermittlung der Beleuchtungsergebnisse erfolgte verkaufsunterstützend mit größter Sorgfalt auf Basis der uns vorliegenden Unterlagen mit Hilfe von marktüblichen Berechnungsverfahren (z.B. Relux, Dialux).

Eine Garantie / Gewährleistung / Haftung für diese kostenlose Errechnung wird von SITECO nicht übernommen. Wir verweisen in diesem Zusammenhang auf die Leistungen der Lichtplanungs- u. Ingenieurbüros.

The determination of the lighting results is performed on a sales support basis, with great thoroughness, using the documents at our disposal and with the aid of calculating procedures customary in the market (e.g. Relux, Dialux).

A guarantee / warranty / liability for this free calculation is not provided by SITECO. In this respect, we refer to the services of the light planning and engineering office.

The following values are based on exact calculations on calibrated lamps, luminaires and their arrangement. In practice, gradual divergences can occur.

Guarantee claims for luminaire data are excluded.

Relux and the luminaire manufacturers accept no liability for consequential damage and damage which is occasioned to the user or to third parties.

## 1 Luminaire data

### 1.1 Siteco, Novaluna (5MC 254 6-2HS1)

#### 1.1.1 Data sheet

---

##### Manufacturer: Siteco

##### **5MC 254 6-2HS1 Einzelleuchte für abgehängte Montage oder Deckenanbau Novaluna**

Gehäuse aus Aluminium-Strangpreßprofil

mit ELDAICON-Lichtlenkung

BAP65 (L <= 1000 cd/m<sup>2</sup> rundum)

Schutzart:IP 20

Schutzklasse: SK I

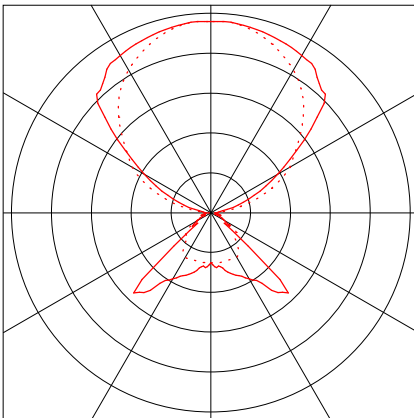
Montageart: Anbau, abgehängt

##### **Luminaire data**

Luminaires efficiency	: 93.9% (D43)
Control gear	: EVG-Dynamic
System power	: 118 W
Length	: 1196 mm
Width	: 365 mm
Height	: 32 mm

##### **Equipped with**

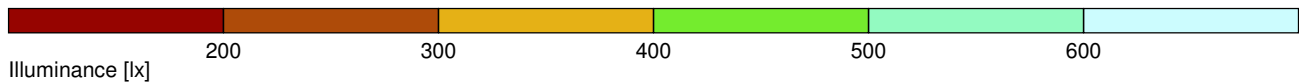
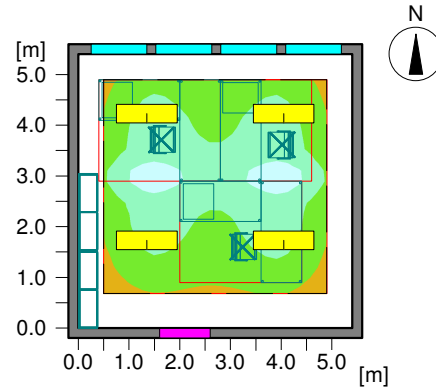
Number of	: 2
Designation	: FDH
Power	: 54 W
Colour	:
Luminous flux	: 4450 lm



## 2 Raum

### 2.1 Summary, Raum

#### 2.1.1 Result overview, Reference plane 1



#### General

Calculation algorithm used	Average indirect fraction
Height of evaluation surface	0.75 m
Height of luminaire plane	2.30 m
Maintenance factor	0.67
Total luminous flux of all lamps	35600 lm
Total power	472 W
Total power per area (29.16 m <sup>2</sup> )	16.19 W/m <sup>2</sup> (3.26 W/m <sup>2</sup> /100lx)

#### Illuminance

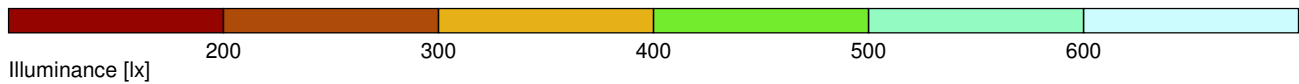
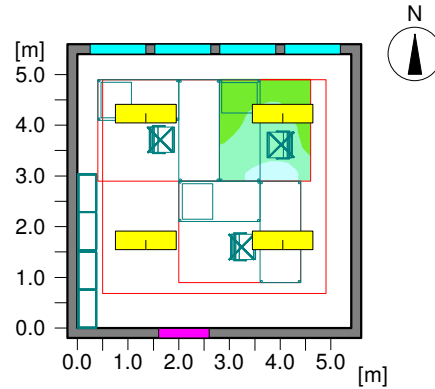
Average illuminance	Eav	497 lx
Minimum illuminance	Emin	335 lx
Maximum illuminance	Emax	642 lx
Uniformity g1	Emin/Em	1:1.48 (0.67)
Uniformity g2	Emin/Emax	1:1.91 (0.52)

#### Type No.\Make

2	4	<b>Siteco</b>	
		Order No.	: 5MC 254 6-2HS1
		Luminaire name	: Novaluna
		Equipment	: 2 x FDH 54 W / 4450 lm

## 2.1 Summary, Raum

### 2.1.2 Result overview, Measuring area (virtual) 1.1



#### General

Calculation algorithm used	Average indirect fraction
Height of evaluation surface	0.75 m
Height of luminaire plane	2.30 m
Maintenance factor	0.67

Total luminous flux of all lamps	35600 lm
Total power	472 W
Total power per area (29.16 m <sup>2</sup> )	16.19 W/m <sup>2</sup>

#### Illuminance

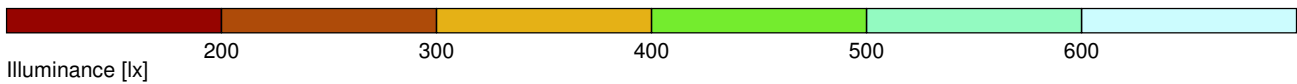
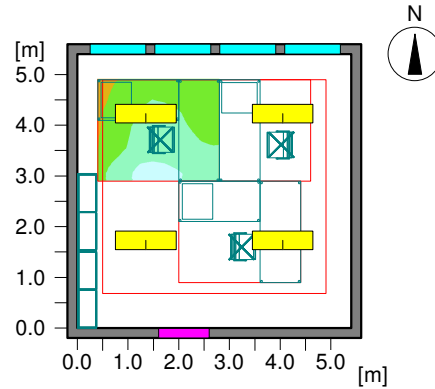
Average illuminance	Eav	518 lx
Minimum illuminance	Emin	415 lx
Maximum illuminance	Emax	632 lx
Uniformity g1	Emin/Em	1:1.25 (0.8)
Uniformity g2	Emin/Emax	1:1.52 (0.66)

#### Type No.\Make

2	4	<b>Siteco</b>	
		Order No.	: 5MC 254 6-2HS1
		Luminaire name	: Novaluna
		Equipment	: 2 x FDH 54 W / 4450 lm

## 2.1 Summary, Raum

### 2.1.3 Result overview, Measuring area (virtual) 1.2



#### General

Calculation algorithm used	Average indirect fraction
Height of evaluation surface	0.75 m
Height of luminaire plane	2.30 m
Maintenance factor	0.67

Total luminous flux of all lamps	35600 lm
Total power	472 W
Total power per area (29.16 m <sup>2</sup> )	16.19 W/m <sup>2</sup>

#### Illuminance

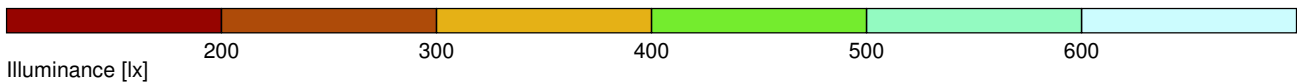
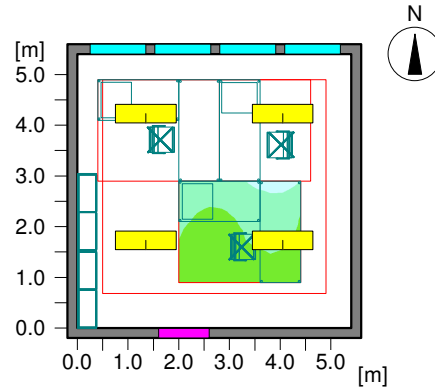
Average illuminance	Eav	502 lx
Minimum illuminance	Emin	361 lx
Maximum illuminance	Emax	629 lx
Uniformity g1	Emin/Em	1:1.39 (0.72)
Uniformity g2	Emin/Emax	1:1.74 (0.57)

#### Type No.\Make

2	4	<b>Siteco</b>	
		Order No.	: 5MC 254 6-2HS1
		Luminaire name	: Novaluna
		Equipment	: 2 x FDH 54 W / 4450 lm

## 2.1 Summary, Raum

### 2.1.4 Result overview, Measuring area (virtual) 1.3



#### General

Calculation algorithm used	Average indirect fraction
Height of evaluation surface	0.75 m
Height of luminaire plane	2.30 m
Maintenance factor	0.67

Total luminous flux of all lamps	35600 lm
Total power	472 W
Total power per area (29.16 m <sup>2</sup> )	16.19 W/m <sup>2</sup>

#### Illuminance

Average illuminance	Eav	500 lx
Minimum illuminance	Emin	408 lx
Maximum illuminance	Emax	629 lx
Uniformity g1	Emin/Em	1:1.22 (0.82)
Uniformity g2	Emin/Emax	1:1.54 (0.65)

#### Type No.\Make

2	4	<b>Siteco</b>	
		Order No.	: 5MC 254 6-2HS1
		Luminaire name	: Novaluna
		Equipment	: 2 x FDH 54 W / 4450 lm

Object : 4 - Axis - Office  
Installation : Novaluna\_Pendant Mounted254\_Eldacc  
Project number :  
Date : 08.2007

## 2 Raum

### 2.2 Calculation results, Raum

#### 2.2.1 3D luminance, Ansicht von vorne

---



---

Luminance in the scene  
Minimum: : 0 cd/m<sup>2</sup>  
Maximum: : 720 cd/m<sup>2</sup>