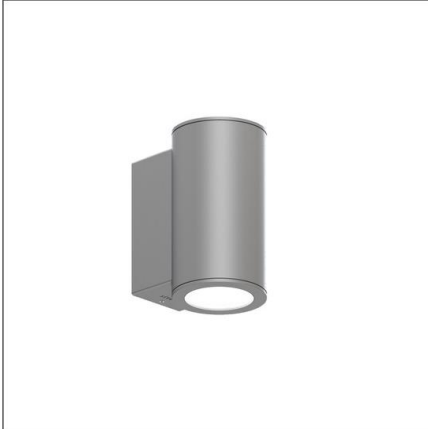


Lichttechnischer Prüfbefund

Familie
CL Wand | rund

Bestell-Nr.: 5CL513623
EAN: 4058352521540

LP-Nummer
59230_3



Ausführung direkt-/ indirekt strahlend
Optik Reflektor aus eloxiertem Aluminium
Abdeckung Abdeckglas, klar
Bestückung LED 3000 K | CRI ≥ 80
Betriebsgerät EVG-DALI
Bemessungswerte Nettolichtstrom = 600 lm
Systemleistung = 5.4 W
Lichtausbeute = 111.1 lm/W

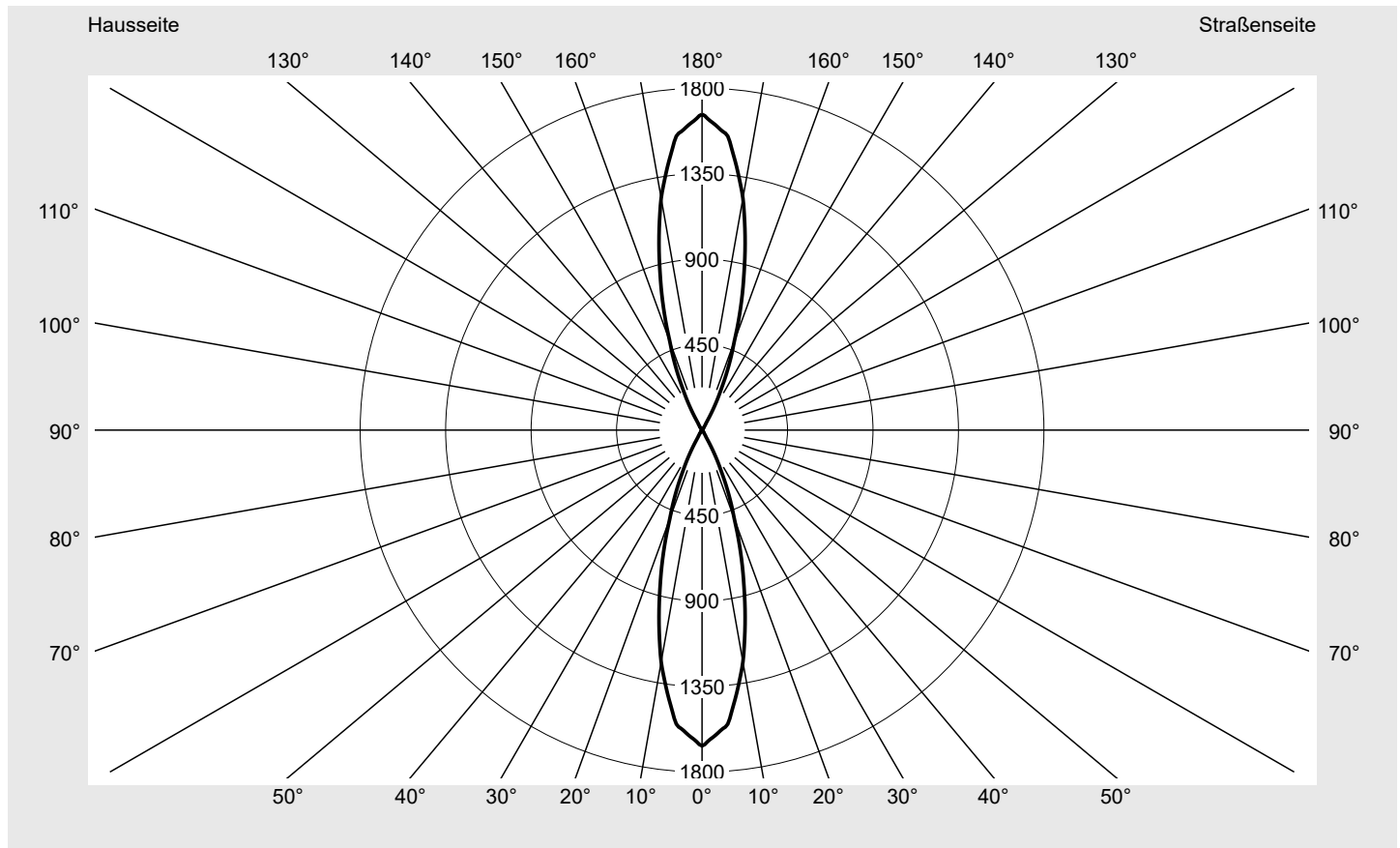
Seriendokumentation
10.12.2021

siteco

Lichtstärke in cd/klm

C180-0

Imax: 1662 cd/klm



Leuchtenbetriebswirkungsgrade

Eta	100.0%
Eta 0° - 90°	50.0%
Eta 90° - 180°	50.0%

Lichtstärkeklasse nach EN13201-2

Klasse:	---
Imax 70°	0.9
Imax 80°	0.5
Imax 90°	0.0
Imax >90°	1662.3
Imax >95°	1662.3

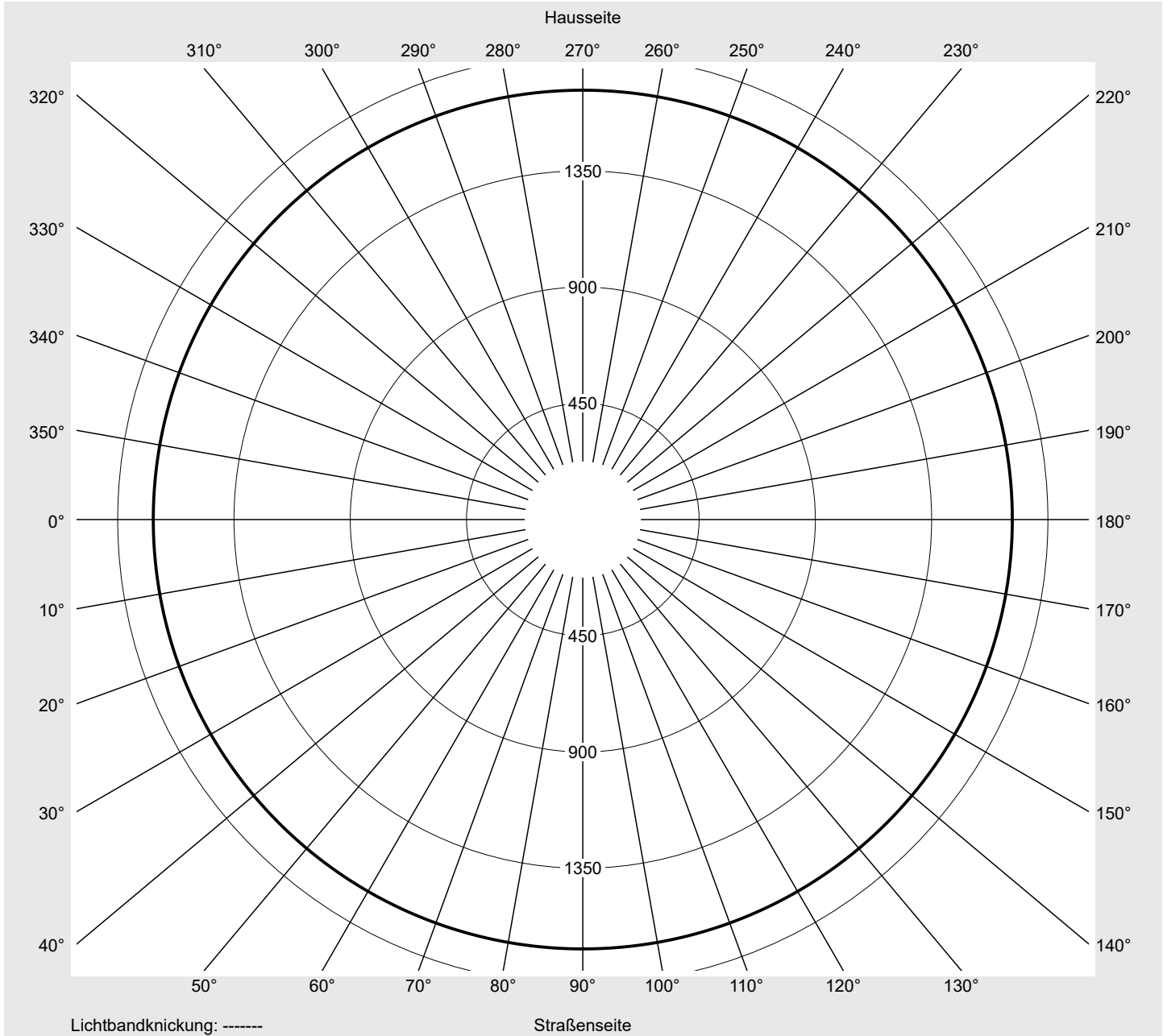
Messbedingungen

DIN EN 13032 und DIN 5032

Lichttechnischer Prüfbefund

Familie CL Wand rund	Bestell-Nr.: 5CL513623 EAN: 4058352521540	LP-Nummer 59230_3
----------------------------------	--	------------------------------------

Kegelmantelkurven in cd/klm **KMK 0°** **sitEco**



Lichttechnischer Prüfbefund

Familie CL Wand rund	Bestell-Nr.: 5CL513623 EAN: 4058352521540	LP-Nummer 59230_3
----------------------------------	--	-----------------------------

Wertetabelle Lichtstärkemessung	Maximale Lichtstärke	sITeco
--	-----------------------------	---------------

C- Ebenen	0°	Phi-Zone	Summe Phi-Zone	C- Ebenen	0°	Phi-Zone	Summe Phi-Zone
γ	Lichtstärke in cd/klm	Lichtstrom in lm/klm		γ	Lichtstärke in cd/klm	Lichtstrom in lm/klm	
0°	1662.3	0.4	0.4	47°	4.4	0.4	494.6
1°	1640.5	3.1	3.5	48°	4.1	0.3	495.0
2°	1618.8	6.2	9.7	49°	3.8	0.3	495.3
3°	1597.0	9.2	18.9	50°	3.5	0.3	495.6
4°	1575.2	12.0	30.9	51°	3.3	0.3	495.9
5°	1553.5	14.8	45.8	52°	3.1	0.3	496.1
6°	1490.7	17.1	62.9	53°	2.9	0.3	496.4
7°	1427.9	19.1	82.0	54°	2.7	0.2	496.6
8°	1365.1	20.8	102.8	55°	2.5	0.2	496.9
9°	1302.3	22.3	125.1	56°	2.4	0.2	497.1
10°	1239.6	23.6	148.7	57°	2.2	0.2	497.3
11°	1162.4	24.3	173.1	58°	2.1	0.2	497.5
12°	1085.3	24.7	197.8	59°	1.9	0.2	497.7
13°	1008.1	24.9	222.7	60°	1.8	0.2	497.8
14°	930.9	24.7	247.4	61°	1.7	0.2	498.0
15°	853.8	24.2	271.6	62°	1.6	0.2	498.1
16°	782.2	23.6	295.3	63°	1.5	0.1	498.3
17°	710.7	22.8	318.0	64°	1.4	0.1	498.4
18°	639.1	21.7	339.7	65°	1.3	0.1	498.5
19°	567.6	20.3	360.0	66°	1.2	0.1	498.7
20°	496.1	18.6	378.6	67°	1.1	0.1	498.8
21°	444.9	17.5	396.1	68°	1.0	0.1	498.9
22°	393.7	16.2	412.2	69°	1.0	0.1	499.0
23°	342.5	14.7	426.9	70°	0.9	0.1	499.1
24°	291.3	13.0	439.9	71°	0.8	0.1	499.2
25°	240.1	11.1	451.0	72°	0.8	0.1	499.2
26°	200.8	9.7	460.7	73°	0.7	0.1	499.3
27°	161.4	8.0	468.7	74°	0.7	0.1	499.4
28°	122.1	6.3	475.0	75°	0.6	0.1	499.5
29°	82.8	4.4	479.4	76°	0.6	0.1	499.5
30°	43.4	2.4	481.8	77°	0.6	0.1	499.6
31°	36.9	2.1	483.9	78°	0.5	0.1	499.6
32°	30.4	1.8	485.6	79°	0.5	0.1	499.7
33°	23.9	1.4	487.1	80°	0.5	0.0	499.7
34°	17.3	1.1	488.1	81°	0.4	0.0	499.8
35°	10.8	0.7	488.8	82°	0.4	0.0	499.8
36°	10.1	0.7	489.5	83°	0.4	0.0	499.9
37°	9.4	0.6	490.1	84°	0.3	0.0	499.9
38°	8.7	0.6	490.7	85°	0.3	0.0	499.9
39°	8.0	0.5	491.2	86°	0.2	0.0	500.0
40°	7.2	0.5	491.7	87°	0.2	0.0	500.0
41°	6.8	0.5	492.2	88°	0.1	0.0	500.0
42°	6.3	0.5	492.7	89°	0.1	0.0	500.0
43°	5.9	0.4	493.1	90°	0.0	0.0	500.0
44°	5.4	0.4	493.5	91°	0.1	0.0	500.0
45°	5.0	0.4	493.9	92°	0.1	0.0	500.0
46°	4.7	0.4	494.3				

Lichttechnischer Prüfbefund

Familie CL Wand rund	Bestell-Nr.: 5CL513623 EAN: 4058352521540	LP-Nummer 59230_3
Wertetabelle Lichtstärkemessung		Maximale Lichtstärke
		siteco

C-Ebenen	0°	Phi-Zone	Summe Phi-Zone	C-Ebenen	0°	Phi-Zone	Summe Phi-Zone
γ	Lichtstärke in cd/klm	Lichtstrom in lm/klm		γ	Lichtstärke in cd/klm	Lichtstrom in lm/klm	
93°	0.2	0.0	500.0	140°	7.2	0.5	508.8
94°	0.2	0.0	500.1	141°	8.0	0.5	509.3
95°	0.3	0.0	500.1	142°	8.7	0.6	509.9
96°	0.3	0.0	500.1	143°	9.4	0.6	510.5
97°	0.4	0.0	500.2	144°	10.1	0.7	511.2
98°	0.4	0.0	500.2	145°	10.8	0.7	511.9
99°	0.4	0.0	500.3	146°	17.3	1.1	512.9
100°	0.5	0.0	500.3	147°	23.9	1.4	514.4
101°	0.5	0.1	500.4	148°	30.4	1.8	516.1
102°	0.5	0.1	500.4	149°	36.9	2.1	518.2
103°	0.6	0.1	500.5	150°	43.4	2.4	520.6
104°	0.6	0.1	500.5	151°	82.8	4.4	525.0
105°	0.6	0.1	500.6	152°	122.1	6.3	531.3
106°	0.7	0.1	500.7	153°	161.4	8.0	539.3
107°	0.7	0.1	500.8	154°	200.8	9.7	549.0
108°	0.8	0.1	500.8	155°	240.1	11.1	560.1
109°	0.8	0.1	500.9	156°	291.3	13.0	573.1
110°	0.9	0.1	501.0	157°	342.5	14.7	587.8
111°	1.0	0.1	501.1	158°	393.7	16.2	603.9
112°	1.0	0.1	501.2	159°	444.9	17.5	621.4
113°	1.1	0.1	501.3	160°	496.1	18.6	640.0
114°	1.2	0.1	501.5	161°	567.6	20.3	660.3
115°	1.3	0.1	501.6	162°	639.1	21.7	682.0
116°	1.4	0.1	501.7	163°	710.7	22.8	704.7
117°	1.5	0.1	501.9	164°	782.2	23.6	728.4
118°	1.6	0.2	502.0	165°	853.8	24.2	752.6
119°	1.7	0.2	502.2	166°	930.9	24.7	777.3
120°	1.8	0.2	502.3	167°	1008.1	24.9	802.2
121°	1.9	0.2	502.5	168°	1085.3	24.7	826.9
122°	2.1	0.2	502.7	169°	1162.4	24.3	851.3
123°	2.2	0.2	502.9	170°	1239.6	23.6	874.9
124°	2.4	0.2	503.1	171°	1302.3	22.3	897.2
125°	2.5	0.2	503.4	172°	1365.1	20.8	918.0
126°	2.7	0.2	503.6	173°	1427.9	19.1	937.1
127°	2.9	0.3	503.9	174°	1490.7	17.1	954.2
128°	3.1	0.3	504.1	175°	1553.5	14.8	969.1
129°	3.3	0.3	504.4	176°	1575.2	12.0	981.1
130°	3.5	0.3	504.7	177°	1597.0	9.2	990.3
131°	3.8	0.3	505.0	178°	1618.8	6.2	996.5
132°	4.1	0.3	505.4	179°	1640.5	3.1	999.6
133°	4.4	0.4	505.7	180°	1662.3	0.4	1000.0
134°	4.7	0.4	506.1				
135°	5.0	0.4	506.5				
136°	5.4	0.4	506.9				
137°	5.9	0.4	507.3				
138°	6.3	0.5	507.8				
139°	6.8	0.5	508.3				

Lichttechnischer Prüfbefund

Familie
CL Wand | rund

Bestell-Nr.: 5CL513623
EAN: 4058352521540

LP-Nummer
59230_3

Dimmstufen-Tabelle

Umgebungstemperatur: 25°C



Lichtstrom [%]	Dimmstufe linear	Dimmstufe logarithmisch	Lichtstrom [lm]	Systemleistung [W]
100	254	254	600	5.4
95	242	252	570	5.2
90	230	250	541	5.0
85	218	248	511	4.7
80	205	246	479	4.5
75	193	244	449	4.2
70	181	242	420	4.0
65	168	239	391	3.7
60	155	236	361	3.5
55	141	232	329	3.2
50	128	229	300	2.9
45	115	225	270	2.7
40	102	221	240	2.4
38	96	218	227	2.3