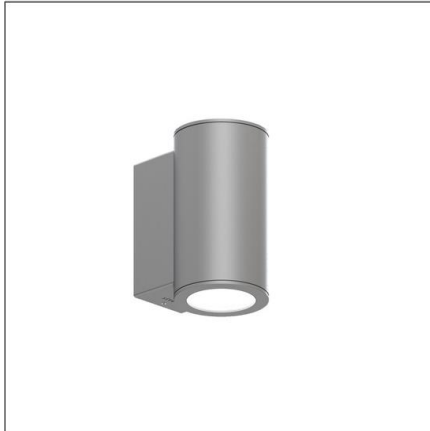


Photometric test report

Family
CL wall | round

Order number: 5CL513613
EAN: 4058352521533

LP number
59229_4



Version	direct narrow distribution
Optic	Reflektor aus eloxiertem Aluminium
Cover	cover glass, transparent
Lamps	LED 3000 K CRI ≥ 80
Controlgear	ECG-DALI
Rated values	Net luminous flux = 300 lm Power consumption = 2.8 W Luminous efficacy = 107.1 lm/W

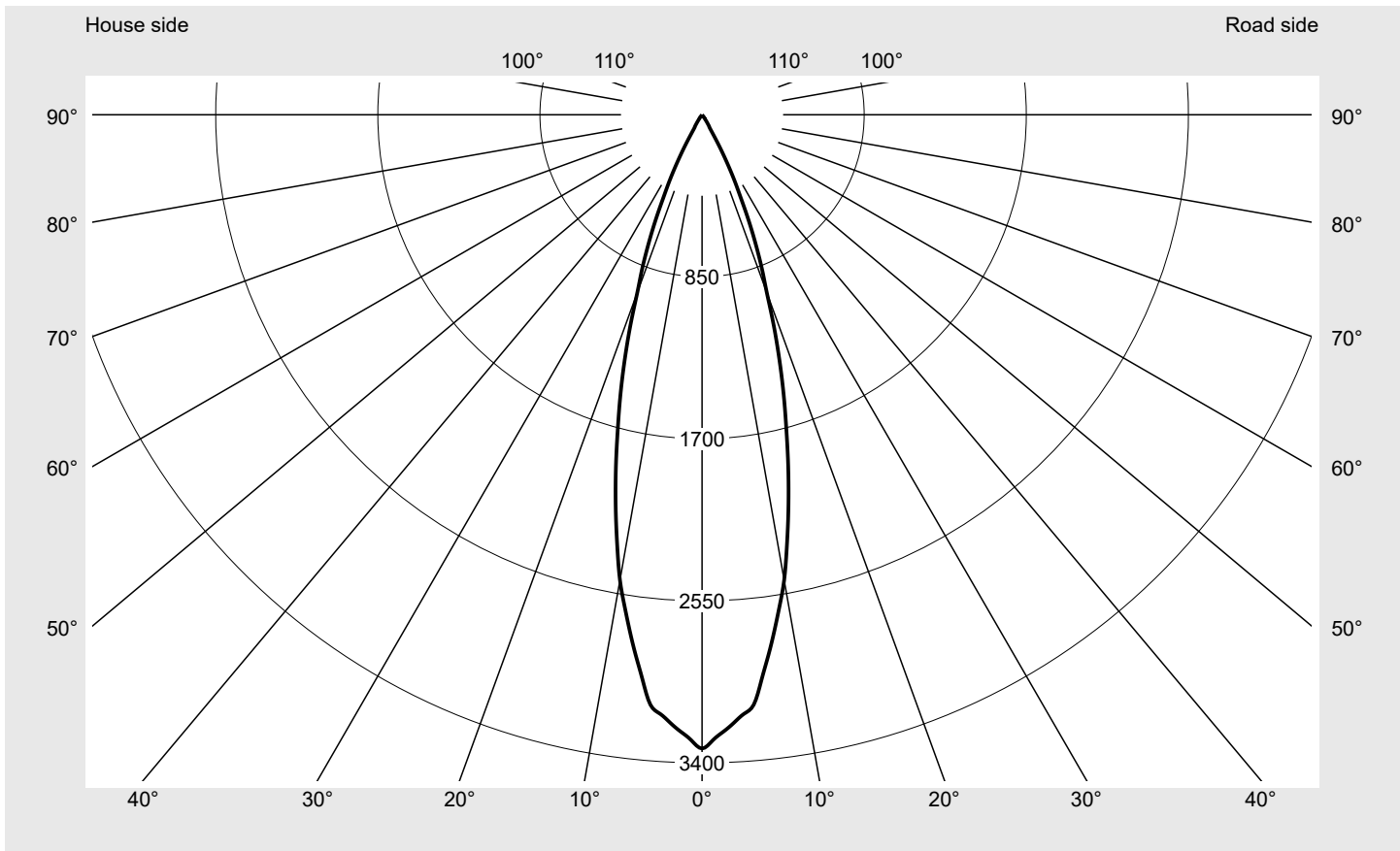
serial
documentation
10.12.2021

siteco

Luminous intensity in cd/klm

C180-0

Imax: 3325 cd/klm



Luminaire output ratios

Eta	100.0%
Eta 0° - 90°	100.0%
Eta 90° - 180°	0.0%

Luminous intensity class acc. to EN13201-2

Class:	G6
Imax 70°	1.8
Imax 80°	0.9
Imax 90°	0.0
Imax >90°	0.0
Imax >95°	0.0

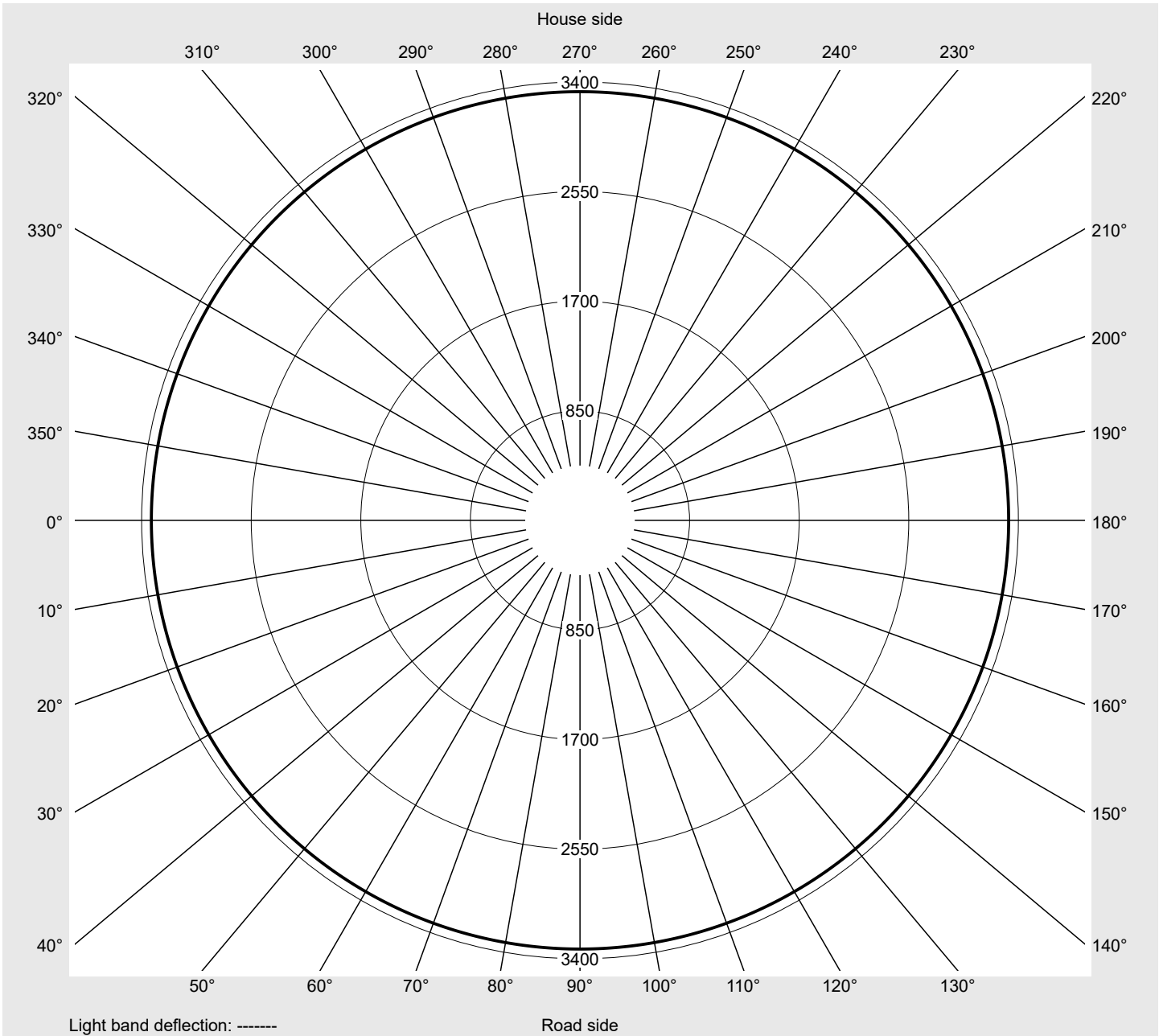
Measurement conditions

DIN EN 13032 and DIN 5032

Photometric test report

Family CL wall round	Order number: 5CL513613 EAN: 4058352521533	LP number 59229_4
---	---	------------------------------------

Envelope curve in cd/klm **KMK 0°** **sitEco**



Photometric test report

Family CL wall round	Order number: 5CL513613 EAN: 4058352521533	LP number 59229_4
---------------------------	---	----------------------

Table of values for luminous intensities	Maximum luminous intensity	sITeCO
--	----------------------------	--------

C-planes	0°	Phi-zone	Total Phi-zone
γ	Luminous intensity in cd/klm		Luminous flux in lm/klm
0°	3324.6	0.8	0.8
1°	3281.1	6.3	7.1
2°	3237.5	12.4	19.5
3°	3194.0	18.3	37.8
4°	3150.5	24.1	61.9
5°	3107.0	29.7	91.6
6°	2981.4	34.2	125.8
7°	2855.8	38.2	163.9
8°	2730.3	41.7	205.6
9°	2604.7	44.7	250.3
10°	2479.1	47.2	297.5
11°	2324.8	48.6	346.1
12°	2170.5	49.5	395.6
13°	2016.2	49.7	445.4
14°	1861.9	49.4	494.8
15°	1707.6	48.5	543.2
16°	1564.5	47.3	590.5
17°	1421.4	45.6	636.1
18°	1278.3	43.3	679.4
19°	1135.2	40.5	719.9
20°	992.1	37.2	757.1
21°	889.7	35.0	792.1
22°	787.4	32.3	824.4
23°	685.0	29.4	853.8
24°	582.6	26.0	879.8
25°	480.2	22.3	902.0
26°	401.6	19.3	921.3
27°	322.9	16.1	937.4
28°	244.2	12.6	950.0
29°	165.5	8.8	958.8
30°	86.9	4.8	963.6
31°	73.8	4.2	967.7
32°	60.8	3.5	971.3
33°	47.7	2.9	974.1
34°	34.7	2.1	976.2
35°	21.7	1.4	977.6
36°	20.2	1.3	978.9
37°	18.8	1.2	980.1
38°	17.4	1.2	981.3
39°	15.9	1.1	982.4
40°	14.5	1.0	983.4
41°	13.6	1.0	984.4
42°	12.7	0.9	985.3
43°	11.7	0.9	986.2
44°	10.8	0.8	987.0
45°	9.9	0.8	987.8
46°	9.3	0.7	988.6

C-planes	0°	Phi-zone	Total Phi-zone
γ	Luminous intensity in cd/klm		Luminous flux in lm/klm
47°	8.8	0.7	989.3
48°	8.2	0.7	989.9
49°	7.6	0.6	990.6
50°	7.0	0.6	991.1
51°	6.6	0.6	991.7
52°	6.3	0.5	992.2
53°	5.9	0.5	992.8
54°	5.5	0.5	993.2
55°	5.1	0.5	993.7
56°	4.8	0.4	994.1
57°	4.5	0.4	994.6
58°	4.2	0.4	994.9
59°	3.9	0.4	995.3
60°	3.6	0.3	995.7
61°	3.4	0.3	996.0
62°	3.2	0.3	996.3
63°	2.9	0.3	996.6
64°	2.7	0.3	996.8
65°	2.5	0.2	997.1
66°	2.4	0.2	997.3
67°	2.2	0.2	997.5
68°	2.1	0.2	997.8
69°	1.9	0.2	998.0
70°	1.8	0.2	998.1
71°	1.7	0.2	998.3
72°	1.6	0.2	998.5
73°	1.5	0.2	998.6
74°	1.4	0.1	998.8
75°	1.3	0.1	998.9
76°	1.2	0.1	999.1
77°	1.1	0.1	999.2
78°	1.1	0.1	999.3
79°	1.0	0.1	999.4
80°	0.9	0.1	999.5
81°	0.8	0.1	999.6
82°	0.8	0.1	999.7
83°	0.7	0.1	999.7
84°	0.6	0.1	999.8
85°	0.6	0.1	999.9
86°	0.5	0.0	999.9
87°	0.3	0.0	1000.0
88°	0.2	0.0	1000.0
89°	0.1	0.0	1000.0
90°	0.0	0.0	1000.0

Photometric test report

Family CL wall round	Order number: 5CL513613 EAN: 4058352521533	LP number 59229_4
----------------------------------	---	-----------------------------

Dimming levels table	environmental temperature: 25°C	sITeco
-----------------------------	---------------------------------	---------------

Luminous flux %	Dimming level linear	Dimming level logarithmic	Luminous flux [lm]	Power consumption [W]
100	254	254	300	2.8
95	241	252	285	2.7
90	227	250	270	2.6
85	214	248	255	2.5
80	200	245	240	2.4
75	187	243	225	2.3
70	174	240	210	2.1
65	161	237	195	2.0
60	148	234	179	1.9
55	136	231	165	1.8
50	123	227	150	1.6
45	110	223	135	1.5
40	98	219	121	1.4