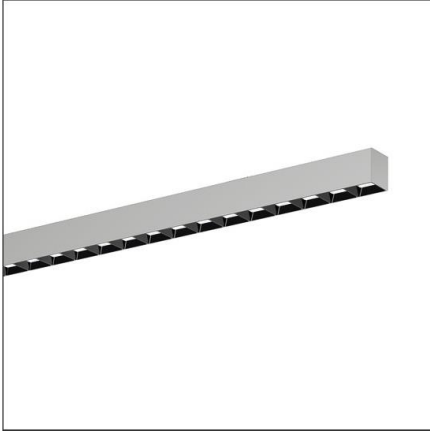


## Lichttechnischer Prüfbefund

Familie  
Silica® 21

Bestell-Nr.: 51MX22TBT5S  
EAN: 4058352687253

LP-Nummer  
59272\_129



**Ausführung** Anbauleuchte, Reflektor, schwarz, direkt strahlend, breit strahlend, UGR≤19 (L65≤1000cd/m<sup>2</sup>), Tunable White

**Bestückung** LED 4000 K | CRI ≥ 80

**Betriebsgerät** EVG-DALI

**Einstellung** Werkseinstellung

**Bemessungswerte** Nettolichtstrom = 4650 lm  
Systemleistung = 42.2 W  
Lichtausbeute = 110.2 lm/W

Seriendokumentation  
03.05.2023

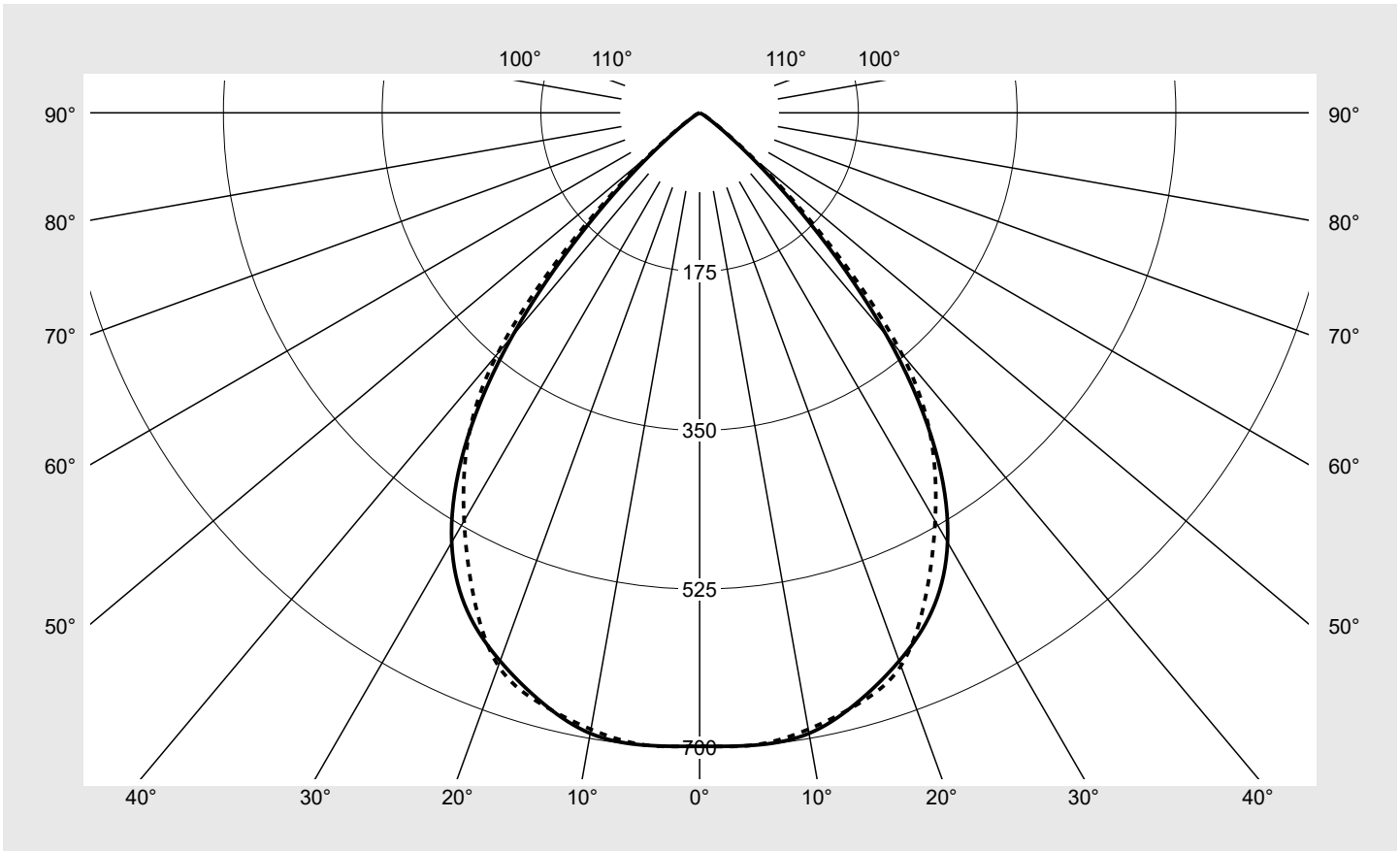
siteco

Lichtstärke in cd/klm

C180-0

C270-90

Imax: 700 cd/klm



#### Klassifizierungen

DIN 5040 A 6 0  
CIE N1=84 N2=99 N3=100  
N4=100 N5=100

#### Leuchtenbetriebswirkungsgrade

$\eta_{LB}$  100,0%  
 $\phi_u$  100,0%  
 $\phi_o$  0,0%

#### Messbedingungen

DIN EN 13032 und DIN 5032

## Lichttechnischer Prüfbefund

<b>Familie</b> <b>Silica® 21</b>	<b>Bestell-Nr.: 51MX22TBT5S</b> <b>EAN: 4058352687253</b>	<b>LP-Nummer</b> <b>59272_129</b>
<b>Wertetabelle Lichtstärkemessung</b>		<b>Maximale Lichtstärke</b>
		<b>sITeco</b>

C- Ebenen	0° 180°	15°	30°	45°	60°	75°	90° 270°	Phi-Zone	Summe Phi-Zone
		165° 195° 345°	150° 210° 330°	135° 225° 315°	120° 240° 300°	105° 255° 285°			
Lichtstärke in cd/klm								Lichtstrom in lm/klm	
γ									
0°	698.3	698.3	698.3	698.3	698.3	698.3	698.3	4.2	4.2
5°	699.6	698.5	693.9	696.9	698.4	696.4	699.4	33.3	37.5
10°	694.6	694.5	689.5	695.3	694.0	687.7	690.0	65.9	103.4
15°	672.6	676.2	675.2	682.1	683.0	677.2	674.7	96.2	199.5
20°	643.1	649.9	651.2	653.1	656.2	653.1	648.8	122.2	321.7
25°	605.9	614.8	613.8	608.6	601.9	597.0	589.1	140.3	462.0
30°	546.6	557.0	551.8	537.6	523.2	517.8	519.3	147.1	609.1
35°	452.6	459.5	452.6	444.2	440.2	442.2	446.7	140.9	750.0
40°	321.1	327.1	329.4	337.0	343.8	344.5	346.6	118.4	868.3
45°	172.2	187.2	203.3	211.2	210.4	196.6	193.1	77.0	945.3
50°	63.8	73.4	88.4	94.7	94.6	78.0	74.0	34.9	980.1
55°	17.5	22.2	30.2	37.1	33.0	23.7	21.3	12.4	992.5
60°	5.9	7.1	10.7	14.2	11.5	8.5	8.2	4.7	997.2
65°	2.1	2.5	3.7	4.8	4.2	3.3	3.2	1.8	998.9
70°	1.4	1.5	1.1	1.1	1.3	1.7	1.7	0.7	999.6
75°	0.3	0.4	0.3	0.5	0.4	0.5	0.5	0.2	999.9
80°	0.1	0.1	0.1	0.1	0.2	0.2	0.2	0.1	999.9
85°	0.0	0.0	0.1	0.1	0.1	0.2	0.2	0.1	1000.0
90°	0.0	0.0	0.0	0.0	0.0	0.0	0.0	0.0	1000.0
95°	0.0	0.0	0.0	0.0	0.0	0.0	0.0	0.0	1000.0
100°	0.0	0.0	0.0	0.0	0.0	0.0	0.0	0.0	1000.0
105°	0.0	0.0	0.0	0.0	0.0	0.0	0.0	0.0	1000.0
110°	0.0	0.0	0.0	0.0	0.0	0.0	0.0	0.0	1000.0
115°	0.0	0.0	0.0	0.0	0.0	0.0	0.0	0.0	1000.0
120°	0.0	0.0	0.0	0.0	0.0	0.0	0.0	0.0	1000.0
125°	0.0	0.0	0.0	0.0	0.0	0.0	0.0	0.0	1000.0
130°	0.0	0.0	0.0	0.0	0.0	0.0	0.0	0.0	1000.0
135°	0.0	0.0	0.0	0.0	0.0	0.0	0.0	0.0	1000.0
140°	0.0	0.0	0.0	0.0	0.0	0.0	0.0	0.0	1000.0
145°	0.0	0.0	0.0	0.0	0.0	0.0	0.0	0.0	1000.0
150°	0.0	0.0	0.0	0.0	0.0	0.0	0.0	0.0	1000.0
155°	0.0	0.0	0.0	0.0	0.0	0.0	0.0	0.0	1000.0
160°	0.0	0.0	0.0	0.0	0.0	0.0	0.0	0.0	1000.0
165°	0.0	0.0	0.0	0.0	0.0	0.0	0.0	0.0	1000.0
170°	0.0	0.0	0.0	0.0	0.0	0.0	0.0	0.0	1000.0
175°	0.0	0.0	0.0	0.0	0.0	0.0	0.0	0.0	1000.0
180°	0.0	0.0	0.0	0.0	0.0	0.0	0.0	0.0	1000.0

## Lichttechnischer Prüfbefund

<b>Familie</b> Silica® 21	<b>Bestell-Nr.: 51MX22TBT5S</b> <b>EAN: 4058352687253</b>	<b>LP-Nummer</b> 59272_129
------------------------------	--	-------------------------------

UGR-Tabelle		Standardraum									
		Blickrichtung quer zur Leuchte (C0)					Blickrichtung längs zur Leuchte (C90)				
Raumabmessungen											
x	y										
2H	2H	18,6	19,9	19,0	20,2	20,6	18,7	20,0	19,1	20,4	20,7
	3H	18,5	19,6	18,9	20,0	20,3	18,6	19,8	19,0	20,1	20,4
	4H	18,4	19,5	18,8	19,8	20,2	18,5	19,6	18,9	19,9	20,3
	6H	18,4	19,3	18,8	19,7	20,1	18,5	19,4	18,9	19,8	20,2
	8H	18,4	19,2	18,8	19,6	20,0	18,5	19,3	18,9	19,7	20,1
	12H	18,4	19,1	18,8	19,5	19,9	18,5	19,2	18,9	19,6	20,1
4H	2H	18,5	19,5	18,9	19,9	20,2	18,6	19,6	19,0	20,0	20,3
	3H	18,3	19,2	18,7	19,6	20,0	18,4	19,3	18,8	19,7	20,1
	4H	18,2	19,0	18,7	19,4	19,8	18,3	19,1	18,8	19,5	19,9
	6H	18,1	18,8	18,6	19,2	19,7	18,3	18,9	18,7	19,3	19,8
	8H	18,1	18,7	18,6	19,1	19,6	18,2	18,8	18,7	19,2	19,7
	12H	18,1	18,6	18,6	19,0	19,5	18,2	18,7	18,7	19,1	19,6
8H	4H	18,1	18,7	18,6	19,1	19,6	18,2	18,8	18,7	19,2	19,7
	6H	18,0	18,5	18,5	18,9	19,5	18,1	18,6	18,6	19,1	19,6
	8H	17,9	18,4	18,4	18,8	19,4	18,0	18,5	18,6	19,0	19,5
	12H	17,9	18,2	18,4	18,7	19,3	18,0	18,4	18,6	18,9	19,4
12H	4H	18,1	18,6	18,6	19,0	19,5	18,2	18,7	18,7	19,1	19,6
	6H	18,0	18,4	18,5	18,8	19,4	18,1	18,5	18,6	19,0	19,5
	8H	17,9	18,2	18,4	18,7	19,3	18,0	18,4	18,6	18,9	19,4

<b>Leuchtdichten-Tabelle</b> Max. für $\gamma \geq 65^\circ$	<b>Lichttechnische Abmessungen in mm:</b> L = 1470 B = 49
--	--

C-Ebenen	$\gamma$	Leuchtdichte in cd/m <sup>2</sup>							
		0° 180°	15° 165° 195° 345°	30° 150° 210° 330°	45° 135° 225° 315°	60° 120° 240° 300°	75° 105° 255° 285°	90° 270°	
45°		15725.2	17086.3	18560.6	19278.1	19212.9	17951.7	17629.9	
50°		6408.6	7376.3	8881.8	9511.4	9497.6	7836.5	7432.3	
55°		1966.5	2494.6	3397.9	4177.4	3714.3	2661.8	2393.3	
60°		763.8	919.4	1380.1	1837.0	1479.1	1094.1	1054.1	
65°		326.0	385.7	558.8	735.7	645.4	500.6	489.0	
70°		257.1	274.3	208.6	204.0	247.3	319.2	327.3	
75°		76.1	101.0	84.3	117.7	109.2	128.2	116.5	
80°		21.2	24.9	35.3	46.1	60.2	71.0	74.4	
85°		28.1	31.9	52.6	74.1	102.2	130.4	141.5	

**Lichttechnischer Prüfbefund**

<b>Familie</b> <b>Silica® 21</b>	<b>Bestell-Nr.: 51MX22TBT5S</b> <b>EAN: 4058352687253</b>	<b>LP-Nummer</b> <b>59272_129</b>
-------------------------------------	--	--------------------------------------

**Leuchtdichten in cd/m²**      γ 65°    γ 70°    γ 75°    γ 80°    γ 85°      **siteco**

