

Order No.: 51HLA1D34SCA | GTIN (EAN): 4058352322949

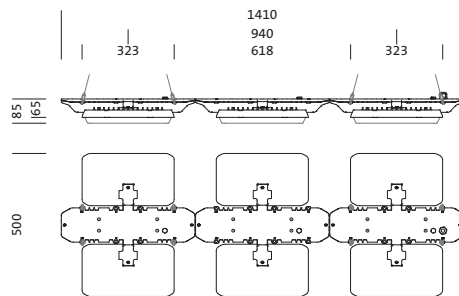
Product description: HB11,nrrw,48560lm840,DA



Highbay 11, LED high bay luminaire, primary light control with lens, of PMMA, light emission: direct distribution, primary light characteristic: symmetric, installation type: suspended mounting, for 3x 2x LED, rated luminous flux: 48.560lm, luminous efficacy: 171lm/W, light colour: 840, colour temperature: 4000K, control gear: ECG DALI, with terminal, 5-pole, max. 2.5mm², mains connection: 230..240V, AC, 50/60Hz, rated input power: 284W, LED unit, of diecast aluminium, unplated, bead blasted, silver, length: 1.410mm, width: 500mm, height: 65mm, housing, of diecast aluminium, uncoated, bead blasted, silver, protection rating (complete): IP65, insulation class (complete): insulation class I (protective earthing), certification: CE, ENEC, VDE, UKCA, protection symbol: D, impact resistance: IK08 with glass or PC cover, permissible operating ambient temperature: -35..+45°C, reducing of maximum allowable ambient temperature of 5°C with ceiling mounting, corresponds to IFS (International Featured Standards) requirements for safety and quality in the food industry, packaging unit: 1 piece



Lamps: 3x 2x LED
 Wt. (kg): 13.3
 GTIN (EAN): 4058352322949



Order No.: 51HLA1D34SCA | GTIN (EAN): 4058352322949

Detailed technical description: HB11,nrrw,48560lm840,DA



Key data

- Product type: LED high bay luminaire
- Product name: Highbay 11
- Order No.: 51HLA1D34SCA

Lighting technology | Lamps | Control gear

Component 1

Lighting technology:

- Light control: lens of PMMA
- Beam angle: narrow distribution
- Symmetry: symmetric
- Light emission: direct distribution
- UGR viewing direction along longitudinal luminaire axis: ≤ 22
- UGR viewing direction along lateral luminaire axis: ≤ 22

Lamps:

- Lamps: with 3x 2x LED
- Rated luminous flux: 48560lm
- Luminous efficacy: 171lm/W
- Colour temperature: 4000K
- Colour rendering index: CRI > 80
- Light colour: 840
- SDCM (Standard Deviation of Colour Matching): MacAdam ≤ 3 SDCM (initial)
- Rated input power: 284W

Operating device:

- Control gear: ECG DALI
- Control: DALI (3 addresses)

Certificates, Standards

- Protection rating: IP65
- Insulation class: insulation class I (protective earthing)
- Impact resistance: IK08 with glass or PC cover
- Protection symbol: D
- Temperature range (operation): -35..+45°C
- Supplement: corresponds to IFS (International Featured Standards) requirements for safety and quality in the food industry, reducing of maximum allowable ambient temperature of 5°C with ceiling mounting
- Certification, designation: CE, ENEC, VDE, UKCA

Material, Colour

- LED unit: diecast aluminium, unplated, bead blasted, silver
- Quantity: 6 piece
- Colour specification: silver
- housing: diecast aluminium, uncoated, bead blasted, silver
- Quantity: 1 piece
- Colour specification: silver

Mounting

- Mounting method, mounting location: suspended mounting, to wire, to the chain
- Mounting height: 6..20m
- Arrangement: single arrangement
- Supplement: only suitable for indoor use, mounting accessories required, please order separately

Electrical connection

- Connection: terminal, 5-pole, max. 2.5mm²
- Nominal voltage: 230..240V, 50/60Hz, AC

Dimensions, Weight

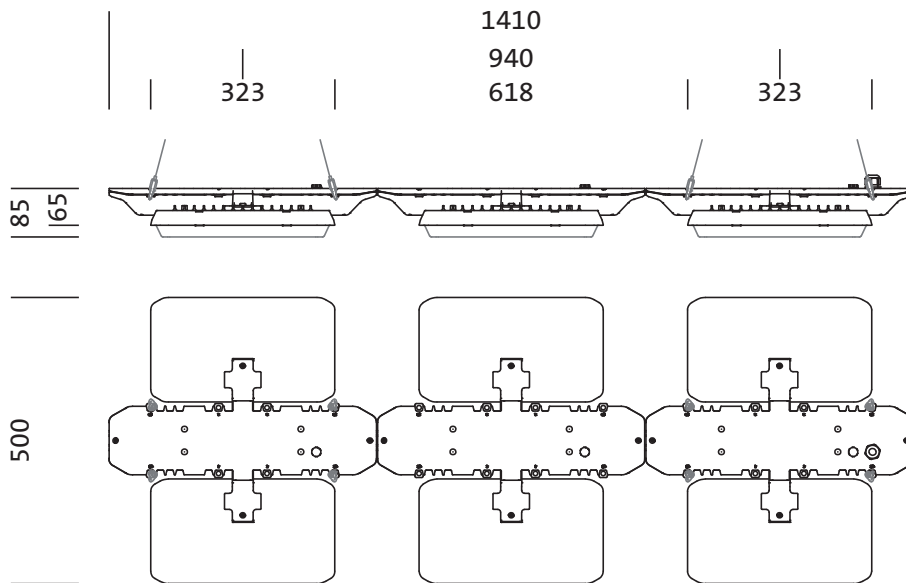
- Length: 1410mm
- Width: 500mm
- Height: 65mm
- Weight: 13.3kg

Service life

- Rated service life: 100000h (L85/B50) at AT = 25°C, 70000h (L85/B50) at AT = 45°C

Order No.: 51HLA1D34SCA | GTIN (EAN): 4058352322949

Dimensions: HB11,nrrw,48560lm840,DA



It is mandatory that the assembly instructions must be observed when planning and installing the electrical installation (to be found at www.siteco.de)
Tolerances related to thermal, electrical and photometric data according to IEC 62722
Issued 16.02.2024 - Modifications and errors subject to change - Ensure that you always use the latest version -

Order No.: 51HLA1D34SCA | GTIN (EAN): 4058352322949

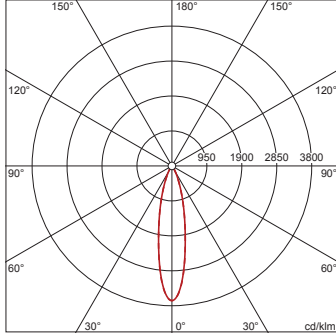
Planning data: HB11,nrrw,48560lm840,DA

51HLA1D34SCA: 1x LED

4058352322949

51HLA1D34SCA

LED 4000 K | CRI ≥ 80 ϕ_N 48560 lm



ϕ_{\downarrow} 100% ϕ_{\uparrow} 0%

Luminance values (cd/m²)

	C 0/180	C 90/270
L ₈₀	6251	10573
L ₇₀	13050	9880
L ₆₅	13475	9787

UGR 21 20.6

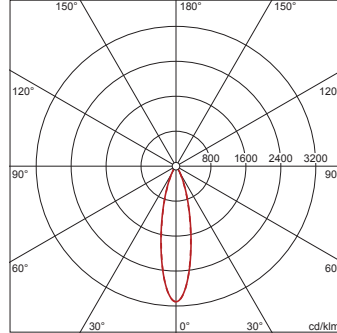
X 4H Y 8H ρ 70/50/20 S 0.25H

51HLA1D34SCA + 59HL91001: 1x LED

4058352322949 + 4058352323519

51HLA1D34SCA + 59HL91001

LED 4000 K | CRI ≥ 80 ϕ_N 46860 lm



ϕ_{\downarrow} 100% ϕ_{\uparrow} 0%

Luminance values (cd/m²)

	C 0/180	C 90/270
L ₈₀	5224	8851
L ₇₀	14112	12081
L ₆₅	16326	12720

UGR 21.8 21.4

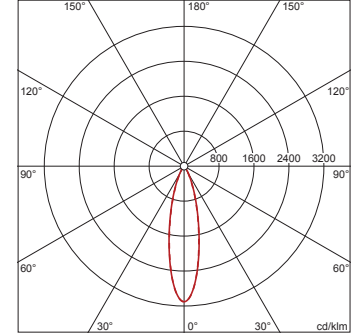
X 4H Y 8H ρ 70/50/20 S 0.25H

51HLA1D34SCA + 59HL91002: 1x LED

4058352322949 + 4058352341650

51HLA1D34SCA + 59HL91002

LED 4000 K | CRI ≥ 80 ϕ_N 44200 lm



ϕ_{\downarrow} 100% ϕ_{\uparrow} 0%

Luminance values (cd/m²)

	C 0/180	C 90/270
L ₈₀	4927	8348
L ₇₀	13311	11395
L ₆₅	15399	11998

UGR 21.6 21.2

X 4H Y 8H ρ 70/50/20 S 0.25H

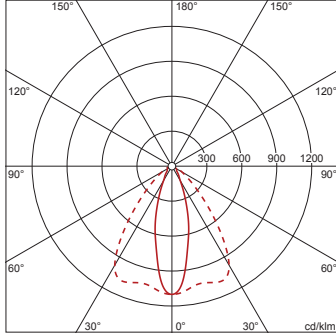
Order No.: 51HLA1D34SCA | GTIN (EAN): 4058352322949

Planning data: HB11,nrrw,48560lm840,DA

**51HLA1D34SCA +
59HL91003: 1x LED**

4058352322949 + 4058352341667
51HLA1D34SCA + 59HL91003

LED 4000 K | CRI ≥ 80 ϕ_N 44250 lm



ϕ_{\downarrow} 99% ϕ_{\uparrow} 1%

Luminance values (cd/m²)

	C 0/180	C 90/270
L ₈₀	10439	15026
L ₇₀	8652	20918
L ₆₅	10343	23102

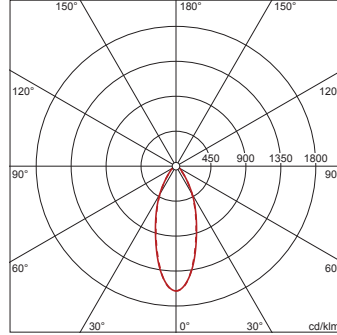
UGR 21.7 26

X 4H Y 8H ρ 70/50/20 S 0.25H

**51HLA1D34SCA +
59HL91004: 1x LED**

4058352322949 + 4058352341674
51HLA1D34SCA + 59HL91004

LED 4000 K | CRI ≥ 80 ϕ_N 45020 lm



ϕ_{\downarrow} 99% ϕ_{\uparrow} 1%

Luminance values (cd/m²)

	C 0/180	C 90/270
L ₈₀	10645	8289
L ₇₀	10240	11167
L ₆₅	12353	11470

UGR 22.6 21.9

X 4H Y 8H ρ 70/50/20 S 0.25H