

Order No.: 5LZ935100A | GTIN (EAN): 4058352838051

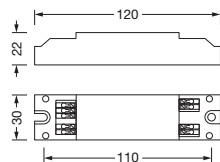
Product description: SCon31,controller,lokCtrl



SITECO Connect 31 Officecontroller, master, local control, dimmable, installation type: recessed, installation location: in the ceiling, of plastic, protection rating (complete): IP20, insulation class (complete): insulation class II (safety insulation), certification: CE, voltage: 220..240V, voltage type: AC, 1 x push button input, 1 x DALI, packaging unit: 1 piece

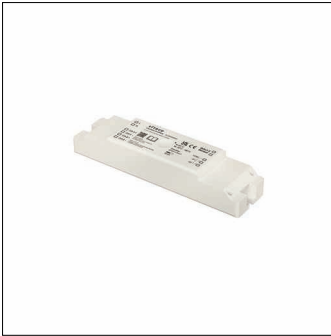
IP 20  

Wt. (kg): 0.1
GTIN (EAN): 4058352838051



Order No.: 5LZ935100A | GTIN (EAN): 4058352838051

Detailed technical description: SCon31,controller,lokCtrl



Key data

- System family: SITECO Connect 31 Office
- Product type: lighting management components
- Product name: SITECO Connect 31 Office
- Order No.: 5LZ935100A

Lighting technology | Lamps | Control gear

Component 1

Operating device:

- Control: DALI, dimmable

Certificates, Standards

- Protection rating: IP20
- Insulation class: insulation class II (safety insulation)
- Temperature range (operation): -20..+60°C
- Certification, designation: CE

Material, Colour

- housing: plastic, pure white (RAL 9010)
- Colour specification: pure white (RAL 9010)

Mounting

- Mounting method, mounting location: recessed, in the ceiling
- Supplement: only suitable for indoor use

Electrical connection

- Connection: terminal, 2-pole, max. 1.5mm²
- Nominal voltage: 220..240V, 50/60Hz, AC

Dimensions, Weight

- Length: 108mm
- Width: 30mm
- Height: 21mm
- Weight: 0.1kg

Inputs

1x push button input

- Connection: screw terminal, 2-pole, max. 1.5mm²
- Feature: zero-potential

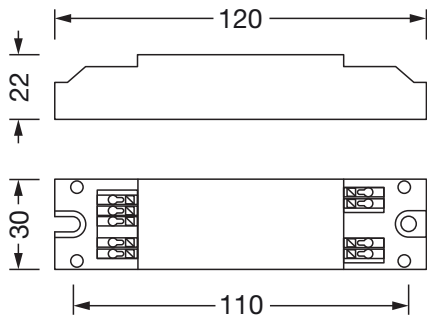
Outputs

1x DALI

- Connection: screw terminal, 2-pole, max. 1.5mm²
- System current: DALI current 96mA
- Feature: DALI, master function, broadcast addressing, max. 30 DALI ECGs, averaging with connected light sensors, connection of DALI2 certified sensors

Order No.: 5LZ935100A | GTIN (EAN): 4058352838051

Dimensions: SCon31,controller,lokCtrl



It is mandatory that the assembly instructions must be observed when planning and installing the electrical installation (to be found at www.siteco.de)

Tolerances related to thermal, electrical and photometric data according to IEC 62722

Issued 13.04.2024 - Modifications and errors subject to change - Ensure that you always use the latest version -