

Order No.: 51HLA1D34SCA | GTIN (EAN): 4058352322949

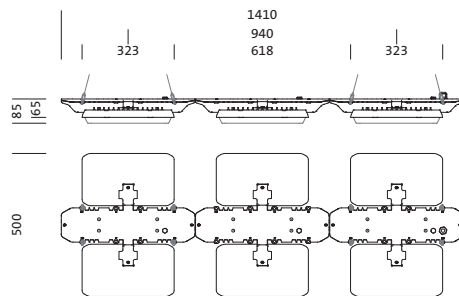
Product description: HB11,nrrw,48560lm840,DA



Highbay 11, LED high bay luminaire, primary light control with lens, of PMMA, light emission: direct distribution, primary light characteristic: symmetric, installation type: suspended mounting, for 3x 2x LED, rated luminous flux: 48.560lm, luminous efficacy: 171lm/W, light colour: 840, colour temperature: 4000K, control gear: ECG DALI, with terminal, 5-pole, max. 2.5mm<sup>2</sup>, mains connection: 230..240V, AC, 50/60Hz, rated input power: 284W, LED unit, of diecast aluminium, unplated, bead blasted, silver, length: 1.410mm, width: 500mm, height: 65mm, housing, of diecast aluminium, uncoated, bead blasted, silver, protection rating (complete): IP65, insulation class (complete): insulation class I (protective earthing), certification: CE, ENEC, VDE, UKCA, protection symbol: D, impact resistance: IK08 with glass or PC cover, permissible operating ambient temperature: -35..+45°C, reducing of maximum allowable ambient temperature of 5°C with ceiling mounting, corresponds to IFS (International Featured Standards) requirements for safety and quality in the food industry, packaging unit: 1 piece



Lamps: 3x 2x LED  
 Wt. (kg): 13.3  
 GTIN (EAN): 4058352322949



It is mandatory that the assembly instructions must be observed when planning and installing the electrical installation (to be found at [www.siteco.com](http://www.siteco.com))  
 Tolerances related to thermal, electrical and photometric data according to IEC 62722  
 Issued 16.02.2024 - Modifications and errors subject to change - Ensure that you always use the latest version -

Order No.: 51HLA1D34SCA | GTIN (EAN): 4058352322949

Detailed technical description: HB11,nrrw,48560lm840,DA



#### Key data

- Product type: LED high bay luminaire
- Product name: Highbay 11
- Order No.: 51HLA1D34SCA

#### Lighting technology | Lamps | Control gear

#### Component 1

#### Lighting technology:

- Light control: lens of PMMA
- Beam angle: narrow distribution
- Symmetry: symmetric
- Light emission: direct distribution
- UGR viewing direction along longitudinal luminaire axis:  $\leq 22$
- UGR viewing direction along lateral luminaire axis:  $\leq 22$

#### Lamps:

- Lamps: with 3x 2x LED
- Rated luminous flux: 48560lm
- Luminous efficacy: 171lm/W
- Colour temperature: 4000K
- Colour rendering index: CRI > 80
- Light colour: 840
- SDCM (Standard Deviation of Colour Matching): MacAdam  $\leq 3$  SDCM (initial)
- Rated input power: 284W

#### Operating device:

- Control gear: ECG DALI
- Control: DALI (3 addresses)

#### Certificates, Standards

- Protection rating: IP65
- Insulation class: insulation class I (protective earthing)
- Impact resistance: IK08 with glass or PC cover
- Protection symbol: D
- Temperature range (operation): -35..+45°C
- Supplement: corresponds to IFS (International Featured Standards) requirements for safety and quality in the food industry, reducing of maximum allowable ambient temperature of 5°C with ceiling mounting
- Certification, designation: CE, ENEC, VDE, UKCA

#### Material, Colour

- LED unit: diecast aluminium, unplated, bead blasted, silver
- Quantity: 6 piece
- Colour specification: silver
- housing: diecast aluminium, uncoated, bead blasted, silver
- Quantity: 1 piece
- Colour specification: silver

#### Mounting

- Mounting method, mounting location: suspended mounting, to wire, to the chain
- Mounting height: 6..20m
- Arrangement: single arrangement
- Supplement: only suitable for indoor use, mounting accessories required, please order separately

#### Electrical connection

- Connection: terminal, 5-pole, max. 2.5mm<sup>2</sup>
- Nominal voltage: 230..240V, 50/60Hz, AC

#### Dimensions, Weight

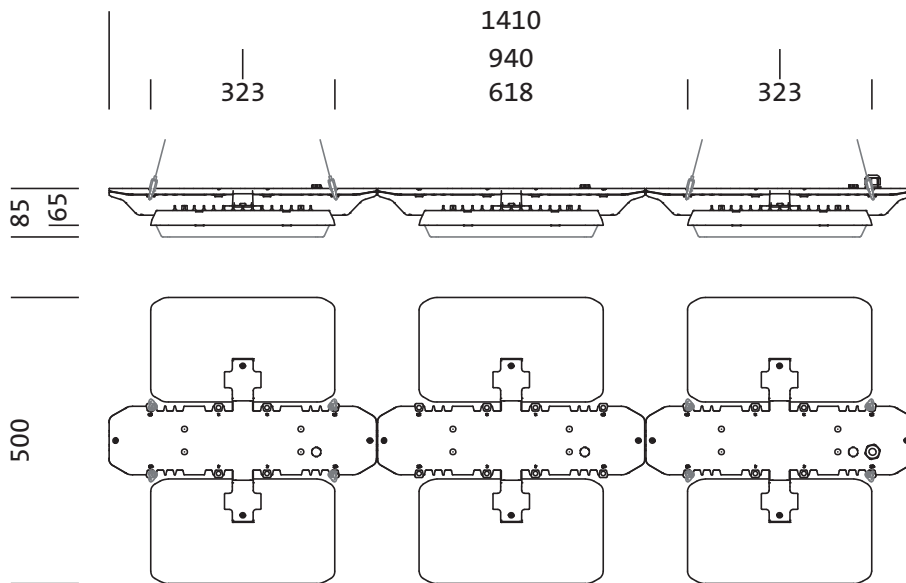
- Length: 1410mm
- Width: 500mm
- Height: 65mm
- Weight: 13.3kg

#### Service life

- Rated service life: 100000h (L85/B50) at AT = 25°C, 70000h (L85/B50) at AT = 45°C

Order No.: 51HLA1D34SCA | GTIN (EAN): 4058352322949

Dimensions: HB11,nrrw,48560lm840,DA



It is mandatory that the assembly instructions must be observed when planning and installing the electrical installation (to be found at [www.siteco.com](http://www.siteco.com))

Tolerances related to thermal, electrical and photometric data according to IEC 62722

Issued 16.02.2024 - Modifications and errors subject to change - Ensure that you always use the latest version -

Order No.: 51HLA1D34SCA | GTIN (EAN): 4058352322949

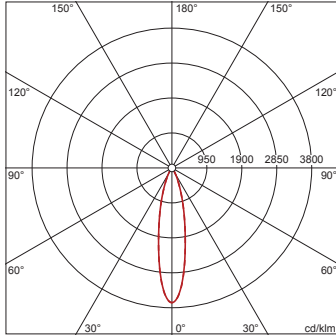
Planning data: HB11,nrrw,48560lm840,DA

## 51HLA1D34SCA: 1x LED

4058352322949

51HLA1D34SCA

LED 4000 K | CRI ≥ 80  $\phi_N$  48560 lm



$\phi_{\downarrow}$  100%  $\phi_{\uparrow}$  0%

Luminance values (cd/m<sup>2</sup>)

	C 0/180	C 90/270
L <sub>80</sub>	6251	10573
L <sub>70</sub>	13050	9880
L <sub>65</sub>	13475	9787

UGR 21 20.6

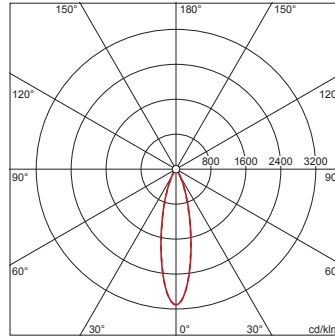
X 4H Y 8H  $\rho$  70/50/20 S 0.25H

## 51HLA1D34SCA + 59HL91001: 1x LED

4058352322949 + 4058352323519

51HLA1D34SCA + 59HL91001

LED 4000 K | CRI ≥ 80  $\phi_N$  46860 lm



$\phi_{\downarrow}$  100%  $\phi_{\uparrow}$  0%

Luminance values (cd/m<sup>2</sup>)

	C 0/180	C 90/270
L <sub>80</sub>	5224	8851
L <sub>70</sub>	14112	12081
L <sub>65</sub>	16326	12720

UGR 21.8 21.4

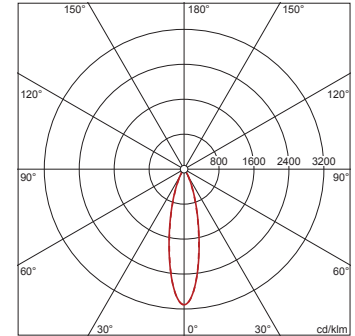
X 4H Y 8H  $\rho$  70/50/20 S 0.25H

## 51HLA1D34SCA + 59HL91002: 1x LED

4058352322949 + 4058352341650

51HLA1D34SCA + 59HL91002

LED 4000 K | CRI ≥ 80  $\phi_N$  44200 lm



$\phi_{\downarrow}$  100%  $\phi_{\uparrow}$  0%

Luminance values (cd/m<sup>2</sup>)

	C 0/180	C 90/270
L <sub>80</sub>	4927	8348
L <sub>70</sub>	13311	11395
L <sub>65</sub>	15399	11998

UGR 21.6 21.2

X 4H Y 8H  $\rho$  70/50/20 S 0.25H

It is mandatory that the assembly instructions must be observed when planning and installing the electrical installation (to be found at [www.siteco.com](http://www.siteco.com))

Tolerances related to thermal, electrical and photometric data according to IEC 62722

Issued 16.02.2024 - Modifications and errors subject to change - Ensure that you always use the latest version -

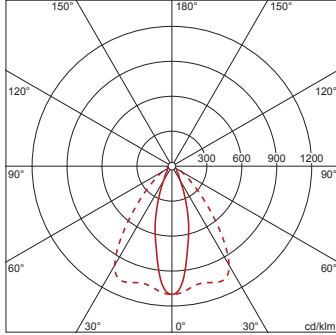
Order No.: 51HLA1D34SCA | GTIN (EAN): 4058352322949

Planning data: HB11,nrrw,48560lm840,DA

**51HLA1D34SCA +  
59HL91003: 1x LED**

4058352322949 + 4058352341667  
51HLA1D34SCA + 59HL91003

LED 4000 K | CRI ≥ 80  $\phi_N$  44250 lm



$\phi_{\downarrow}$  99%  $\phi_{\uparrow}$  1%

Luminance values (cd/m<sup>2</sup>)

	C 0/180	C 90/270
L <sub>80</sub>	10439	15026
L <sub>70</sub>	8652	20918
L <sub>65</sub>	10343	23102

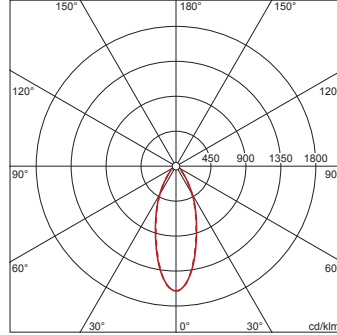
UGR 21.7 26

X 4H Y 8H  $\rho$  70/50/20 S 0.25H

**51HLA1D34SCA +  
59HL91004: 1x LED**

4058352322949 + 4058352341674  
51HLA1D34SCA + 59HL91004

LED 4000 K | CRI ≥ 80  $\phi_N$  45020 lm



$\phi_{\downarrow}$  99%  $\phi_{\uparrow}$  1%

Luminance values (cd/m<sup>2</sup>)

	C 0/180	C 90/270
L <sub>80</sub>	10645	8289
L <sub>70</sub>	10240	11167
L <sub>65</sub>	12353	11470

UGR 22.6 21.9

X 4H Y 8H  $\rho$  70/50/20 S 0.25H