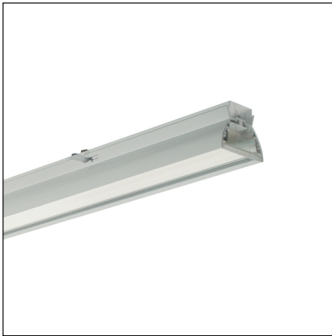


Order No. OSRAM: 4050737970592 | Order No. Siteco: 5TR21271V4105

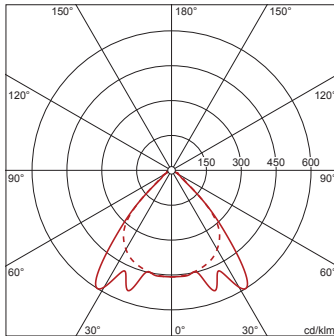
Product description: Mod-RS,LI,sym,wd,LED10500lm840,0/1,wh



Modario® RSLuminaire insert, length: 1.495mm, width: 75mm, LED light colour: 840, control gear: ON/OFF, control gear: ECG, with plug, 3-pole, with phase selection, mains connection: 230V, AC/DC, 0/50..60Hz, primary anti-glare with High Definition Primitives (HDP®), primary optical cover: prismatic diffuser, of PMMA, light emission: direct distribution, primary light characteristic: symmetric, protection rating (complete): IP20, protection rating (LED compartment): IP40, insulation class (complete): insulation class I (protective earthing), certification: CE, ENEC, VDE, permissible ambient temperature for indoor applications: -30..+50°C, corresponds to IFS (International Featured Standards) requirements for safety and quality in the food industry reducing of maximum allowable ambient temperature of 5°C with ceiling mounting, packaging unit: 1 piece

4050737970592  
5TR21271V4105

LED 4000K / CRI ≥ 80    ϕ<sub>N</sub> 10500 lm



Lamps: LED  
Wt. (kg): 3.0  
GTIN (EAN): 4050737970592

**siteco** AN OSRAM BUSINESS    5TR21271V4105

The luminaire contains built-in LED lamps

LED

The LED-lamps cannot be changed in the luminaire

**874/2012**

