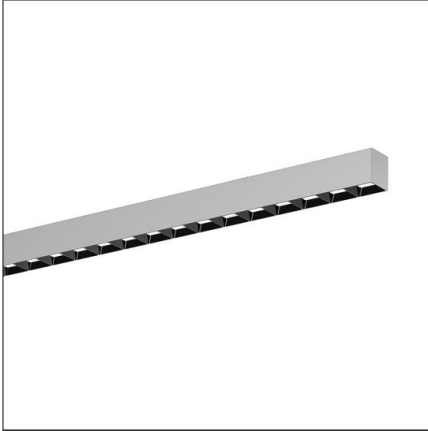


## Photometric test report

Family  
Silica® 21

Order number: 51MX22TCTAS  
EAN: 4058352800157

LP number  
59272\_138



**Version** surface-mounted luminaire, reflector, black, direct distribution, wide distribution, UGR≤19 (L65≤1000cd/m²), tunable white

**Lamps** LED 4000 K | CRI ≥ 80

**Controlgear** ECG-DALI

**Setting** factory setting

**Rated values** Net luminous flux = 9300 lm  
Power consumption = 84.5 W  
Luminous efficacy = 110.1 lm/W

serial  
documentation  
03.05.2023

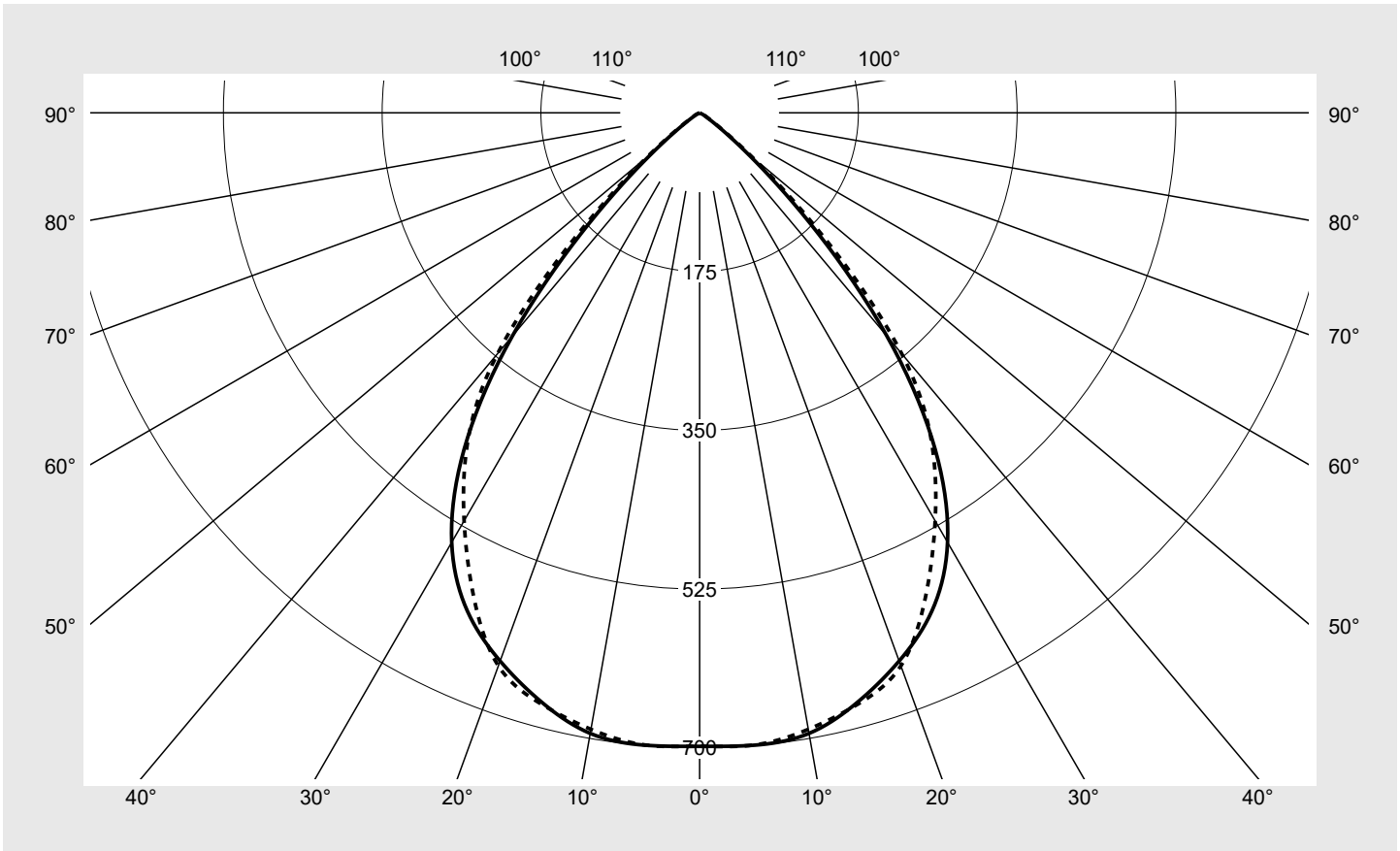
siteco

Luminous intensity in cd/klm

C180-0

C270-90

Imax: 700 cd/klm



#### Classifications

DIN 5040 A 6 0  
CIE N1=84 N2=99 N3=100  
N4=100 N5=100

#### Luminaire light output ratios

$\eta_{LB}$  100.0%  
 $\phi_u$  100.0%  
 $\phi_o$  0.0%

#### Measurement conditions

DIN EN 13032 and DIN 5032

## Photometric test report

Family <b>Silica® 21</b>	Order number: <b>51MX22TCTAS</b> EAN: <b>4058352800157</b>	LP number <b>59272_138</b>
<b>Table of values for luminous intensities</b>		<b>Maximum luminous intensity</b>
		<b>siteco</b>

C-planes $\gamma$	0° 180°	15°	30°	45°	60°	75°	90° 270°	Phi-zone	Total Phi-zone
		165° 195° 345°	150° 210° 330°	135° 225° 315°	120° 240° 300°	105° 255° 285°			
Luminous intensity in cd/klm								Luminous flux in lm/klm	
0°	698.3	698.3	698.3	698.3	698.3	698.3	698.3	4.2	4.2
5°	699.6	698.5	693.9	696.9	698.4	696.4	699.4	33.3	37.5
10°	694.6	694.5	689.5	695.3	694.0	687.7	690.0	65.9	103.4
15°	672.6	676.2	675.2	682.1	683.0	677.2	674.7	96.2	199.5
20°	643.1	649.9	651.2	653.1	656.2	653.1	648.8	122.2	321.7
25°	605.9	614.8	613.8	608.6	601.9	597.0	589.1	140.3	462.0
30°	546.6	557.0	551.8	537.6	523.2	517.8	519.3	147.1	609.1
35°	452.6	459.5	452.6	444.2	440.2	442.2	446.7	140.9	750.0
40°	321.1	327.1	329.4	337.0	343.8	344.5	346.6	118.4	868.3
45°	172.2	187.2	203.3	211.2	210.4	196.6	193.1	77.0	945.3
50°	63.8	73.4	88.4	94.7	94.6	78.0	74.0	34.9	980.1
55°	17.5	22.2	30.2	37.1	33.0	23.7	21.3	12.4	992.5
60°	5.9	7.1	10.7	14.2	11.5	8.5	8.2	4.7	997.2
65°	2.1	2.5	3.7	4.8	4.2	3.3	3.2	1.8	998.9
70°	1.4	1.5	1.1	1.1	1.3	1.7	1.7	0.7	999.6
75°	0.3	0.4	0.3	0.5	0.4	0.5	0.5	0.2	999.9
80°	0.1	0.1	0.1	0.1	0.2	0.2	0.2	0.1	999.9
85°	0.0	0.0	0.1	0.1	0.1	0.2	0.2	0.1	1000.0
90°	0.0	0.0	0.0	0.0	0.0	0.0	0.0	0.0	1000.0
95°	0.0	0.0	0.0	0.0	0.0	0.0	0.0	0.0	1000.0
100°	0.0	0.0	0.0	0.0	0.0	0.0	0.0	0.0	1000.0
105°	0.0	0.0	0.0	0.0	0.0	0.0	0.0	0.0	1000.0
110°	0.0	0.0	0.0	0.0	0.0	0.0	0.0	0.0	1000.0
115°	0.0	0.0	0.0	0.0	0.0	0.0	0.0	0.0	1000.0
120°	0.0	0.0	0.0	0.0	0.0	0.0	0.0	0.0	1000.0
125°	0.0	0.0	0.0	0.0	0.0	0.0	0.0	0.0	1000.0
130°	0.0	0.0	0.0	0.0	0.0	0.0	0.0	0.0	1000.0
135°	0.0	0.0	0.0	0.0	0.0	0.0	0.0	0.0	1000.0
140°	0.0	0.0	0.0	0.0	0.0	0.0	0.0	0.0	1000.0
145°	0.0	0.0	0.0	0.0	0.0	0.0	0.0	0.0	1000.0
150°	0.0	0.0	0.0	0.0	0.0	0.0	0.0	0.0	1000.0
155°	0.0	0.0	0.0	0.0	0.0	0.0	0.0	0.0	1000.0
160°	0.0	0.0	0.0	0.0	0.0	0.0	0.0	0.0	1000.0
165°	0.0	0.0	0.0	0.0	0.0	0.0	0.0	0.0	1000.0
170°	0.0	0.0	0.0	0.0	0.0	0.0	0.0	0.0	1000.0
175°	0.0	0.0	0.0	0.0	0.0	0.0	0.0	0.0	1000.0
180°	0.0	0.0	0.0	0.0	0.0	0.0	0.0	0.0	1000.0

## Photometric test report

Family <b>Silica® 21</b>	Order number: <b>51MX22TCTAS</b> EAN: <b>4058352800157</b>	LP number <b>59272_138</b>
-----------------------------	---	-------------------------------

UGR-Table	Standard room	siteco	
-----------	---------------	--------	--

Reflection factor of ceiling	0.7	0.7	0.5	0.5	0.3	0.7	0.7	0.5	0.5	0.3	
Reflection factor of walls	0.5	0.3	0.5	0.3	0.3	0.5	0.3	0.5	0.3	0.3	
Reflection factor of floor	0.2	0.2	0.2	0.2	0.2	0.2	0.2	0.2	0.2	0.2	
Room dimensions	View crosswise (C0)					View endwise (C90)					
x	y										
2H	2H	18.6	19.9	19.0	20.2	20.6	18.7	20.0	19.1	20.4	20.7
	3H	18.5	19.6	18.9	20.0	20.3	18.6	19.8	19.0	20.1	20.4
	4H	18.4	19.5	18.8	19.8	20.2	18.5	19.6	18.9	19.9	20.3
	6H	18.4	19.3	18.8	19.7	20.1	18.5	19.4	18.9	19.8	20.2
	8H	18.4	19.2	18.8	19.6	20.0	18.5	19.3	18.9	19.7	20.1
	12H	18.4	19.1	18.8	19.5	19.9	18.5	19.2	18.9	19.6	20.1
4H	2H	18.5	19.5	18.9	19.9	20.2	18.6	19.6	19.0	20.0	20.3
	3H	18.3	19.2	18.7	19.6	20.0	18.4	19.3	18.8	19.7	20.1
	4H	18.2	19.0	18.7	19.4	19.8	18.3	19.1	18.8	19.5	19.9
	6H	18.1	18.8	18.6	19.2	19.7	18.3	18.9	18.7	19.3	19.8
	8H	18.1	18.7	18.6	19.1	19.6	18.2	18.8	18.7	19.2	19.7
	12H	18.1	18.6	18.6	19.0	19.5	18.2	18.7	18.7	19.1	19.6
8H	4H	18.1	18.7	18.6	19.1	19.6	18.2	18.8	18.7	19.2	19.7
	6H	18.0	18.5	18.5	18.9	19.5	18.1	18.6	18.6	19.1	19.6
	8H	17.9	18.4	18.4	18.8	19.4	18.0	18.5	18.6	19.0	19.5
	12H	17.9	18.2	18.4	18.7	19.3	18.0	18.4	18.6	18.9	19.4
12H	4H	18.1	18.6	18.6	19.0	19.5	18.2	18.7	18.7	19.1	19.6
	6H	18.0	18.4	18.5	18.8	19.4	18.1	18.5	18.6	19.0	19.5
	8H	17.9	18.2	18.4	18.7	19.3	18.0	18.4	18.6	18.9	19.4

Luminance table	Max. for $\gamma \geq 65^\circ$	Photometric dimensions in mm:	L = 2940 B = 49
-----------------	---------------------------------	-------------------------------	--------------------

C-planes	$\gamma$	0° 180°	15° 165° 195° 345°	30° 150° 210° 330°	45° 135° 225° 315°	60° 120° 240° 300°	75° 105° 255° 285°	90° 270°
			Luminance in cd/m²					
45°		15725.2	17086.3	18560.6	19278.1	19212.9	17951.7	17629.9
50°		6408.6	7376.3	8881.8	9511.4	9497.6	7836.5	7432.3
55°		1966.5	2494.6	3397.9	4177.4	3714.3	2661.8	2393.3
60°		763.8	919.4	1380.1	1837.0	1479.1	1094.1	1054.1
65°		326.0	385.7	558.8	735.7	645.4	500.6	489.0
70°		257.1	274.3	208.6	204.0	247.3	319.2	327.3
75°		76.1	101.0	84.3	117.7	109.2	128.2	116.5
80°		21.2	24.9	35.3	46.1	60.2	71.0	74.4
85°		28.1	31.9	52.6	74.1	102.2	130.4	141.5

**Photometric test report**

<b>Family</b> <b>Silica® 21</b>	<b>Order number: 51MX22TCTAS</b> <b>EAN: 4058352800157</b>	<b>LP number</b> <b>59272_138</b>
------------------------------------	---	--------------------------------------

**Luminance values in cd/m<sup>2</sup>**     γ 65°   γ 70°   γ 75°   γ 80°   γ 85°     **siteco**

