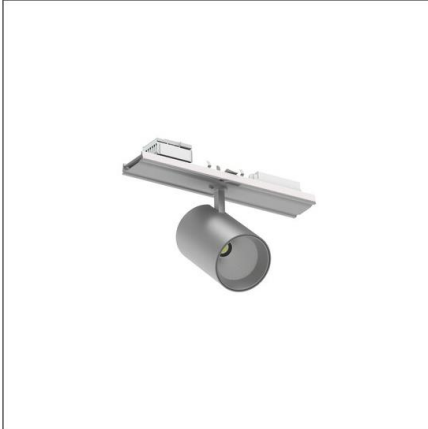


Photometric test report

Family
Spot 21 Licross®

Order number: 51SL63MB11A2C
EAN: 4069025502674

LP number
59936_33



Version housing, white aluminium, reflector, cover glass, transparent, medium distribution

Lamps LED 2700 K | CRI ≥ 90

Controlgear ECG Multilumen

Setting factory setting: DIP-Step=4

Rated values Net luminous flux = 2670 lm
Power consumption = 18.5 W
Luminous efficacy = 144.3 lm/W

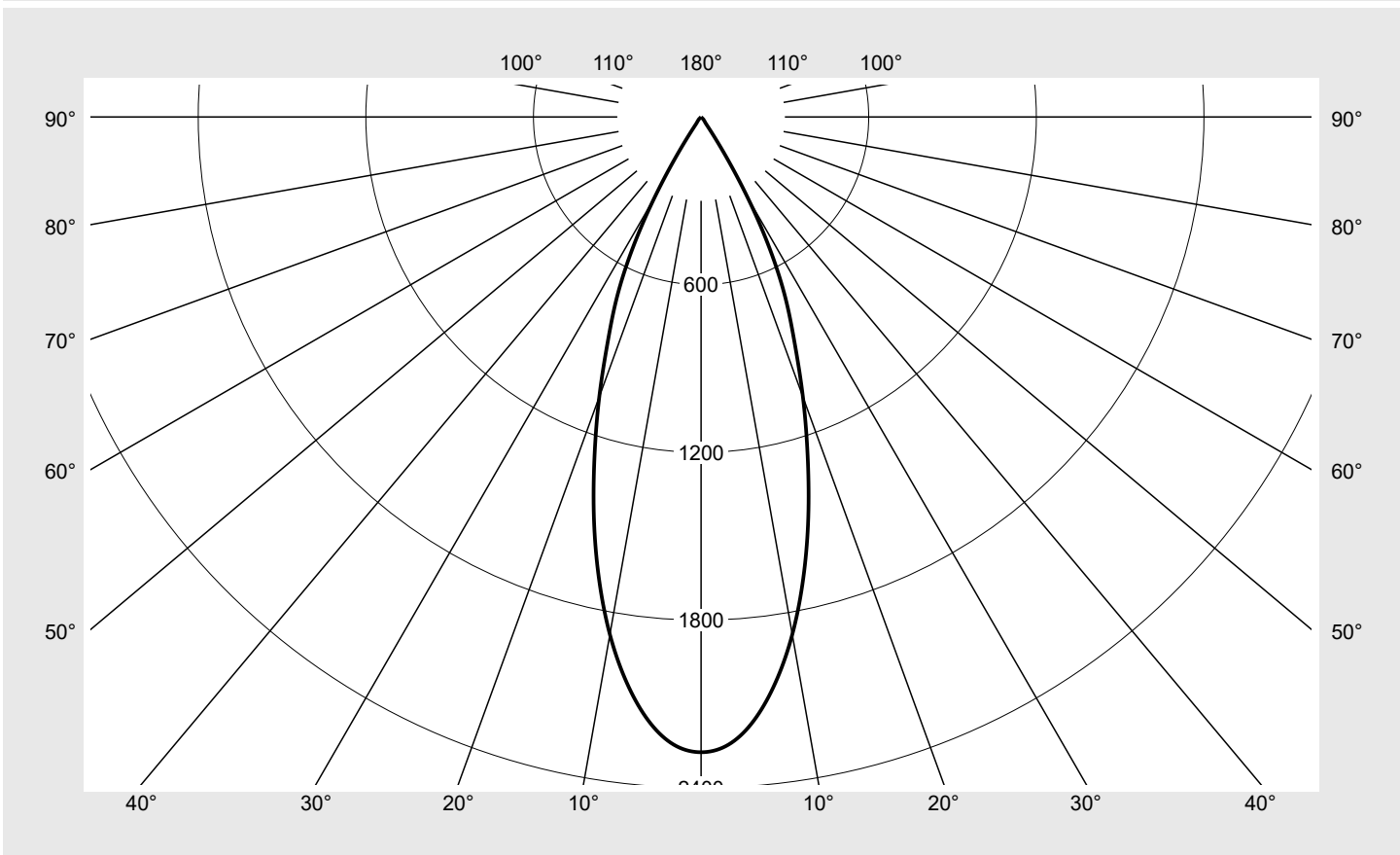
serial
documentation
21.05.2026

sitEco

Luminous intensity in cd/klm

C180-0

Imax: 2273 cd/klm



Classifications

DIN 5040 A 8 0
CIE N1=98 N2=99 N3=100
N4=100 N5=100

Luminaire light output ratios

η_{LB} 100.0%
 ϕ_u 100.0%
 ϕ_o 0.0%

Measurement conditions

DIN EN 13032 and DIN 5032

Photometric test report

Family Spot 21 Licross®	Order number: 51SL63MB11A2C EAN: 4069025502674	LP number 59936_33
--	---	-------------------------------------

sITeco

Table of values for luminous intensities	Maximum luminous intensity
---	-----------------------------------

C-planes	0°	Phi-zone	Total Phi-zone
γ	Luminous intensity in cd/klm	Luminous flux in lm/klm	
0,0°	2272.8	3.4	3.4
2,5°	2247.7	26.9	30.3
5,0°	2167.7	51.8	82.1
7,5°	2040.8	73.0	155.1
10,0°	1880.0	89.5	244.6
12,5°	1690.1	100.3	344.9
15,0°	1482.7	105.2	450.1
17,5°	1267.9	104.5	554.6
20,0°	1065.6	99.9	654.5
22,5°	874.9	91.8	746.3
25,0°	714.3	82.8	829.0
27,5°	533.8	67.6	896.6
30,0°	335.3	46.0	942.6
32,5°	151.5	22.3	964.9
35,0°	44.0	6.9	971.8
37,5°	23.3	3.9	975.7
40,0°	17.4	3.1	978.7
42,5°	13.8	2.6	981.3
45,0°	11.3	2.2	983.5
47,5°	9.4	1.9	985.4
50,0°	8.2	1.7	987.1
52,5°	7.3	1.6	988.7
55,0°	6.6	1.5	990.2
57,5°	6.0	1.4	991.6
60,0°	5.5	1.3	992.9
62,5°	5.0	1.2	994.1
65,0°	4.6	1.1	995.3
67,5°	4.1	1.0	996.3
70,0°	3.6	0.9	997.2
72,5°	3.0	0.8	998.0
75,0°	2.3	0.6	998.6
77,5°	1.8	0.5	999.1
80,0°	1.4	0.4	999.5
82,5°	1.0	0.3	999.8
85,0°	0.6	0.2	999.9
87,5°	0.2	0.1	1000.0
90,0°	0.0	0.0	1000.0

Photometric test report

Family Spot 21 Licross®	Order number: 51SL63MB11A2C EAN: 4069025502674	LP number 59936_33
-----------------------------------	---	------------------------------

UGR-Table		Standard room									
Reflection factor of ceiling	0.7	0.7	0.5	0.5	0.3	0.7	0.7	0.5	0.5	0.3	
Reflection factor of walls	0.5	0.3	0.5	0.3	0.3	0.5	0.3	0.5	0.3	0.3	
Reflection factor of floor	0.2	0.2	0.2	0.2	0.2	0.2	0.2	0.2	0.2	0.2	
Room dimensions		View crosswise (C0)					View endwise (C90)				
x	y										
2H	2H	13.5	14.6	13.9	14.9	15.2	13.5	14.6	13.9	14.9	15.2
	3H	13.8	14.7	14.2	15.0	15.4	13.8	14.7	14.2	15.0	15.4
	4H	13.9	14.7	14.3	15.1	15.5	13.9	14.7	14.3	15.1	15.5
	6H	14.0	14.7	14.4	15.1	15.5	14.0	14.7	14.4	15.1	15.5
	8H	14.2	14.7	14.6	15.1	15.5	14.2	14.7	14.6	15.1	15.5
	12H	14.2	14.6	14.6	15.0	15.5	14.2	14.6	14.6	15.0	15.5
4H	2H	13.5	14.3	13.9	14.6	15.0	13.5	14.3	13.9	14.6	15.0
	3H	13.9	14.5	14.3	14.9	15.3	13.9	14.5	14.3	14.9	15.3
	4H	14.0	14.6	14.5	15.0	15.5	14.0	14.6	14.5	15.0	15.5
	6H	14.2	14.7	14.6	15.1	15.6	14.2	14.7	14.6	15.1	15.6
	8H	14.3	14.7	14.7	15.1	15.6	14.3	14.7	14.7	15.1	15.6
	12H	14.3	14.6	14.8	15.1	15.6	14.3	14.6	14.8	15.1	15.6
8H	4H	14.1	14.5	14.5	14.9	15.4	14.1	14.5	14.5	14.9	15.4
	6H	14.3	14.6	14.8	15.1	15.6	14.3	14.6	14.8	15.1	15.6
	8H	14.3	14.6	14.8	15.1	15.7	14.3	14.6	14.8	15.1	15.7
	12H	14.4	14.6	14.9	15.1	15.7	14.4	14.6	14.9	15.1	15.7
12H	4H	14.1	14.4	14.6	14.9	15.4	14.1	14.4	14.6	14.9	15.4
	6H	14.3	14.5	14.8	15.0	15.6	14.3	14.5	14.8	15.0	15.6
	8H	14.3	14.6	14.9	15.1	15.6	14.3	14.6	14.9	15.1	15.6

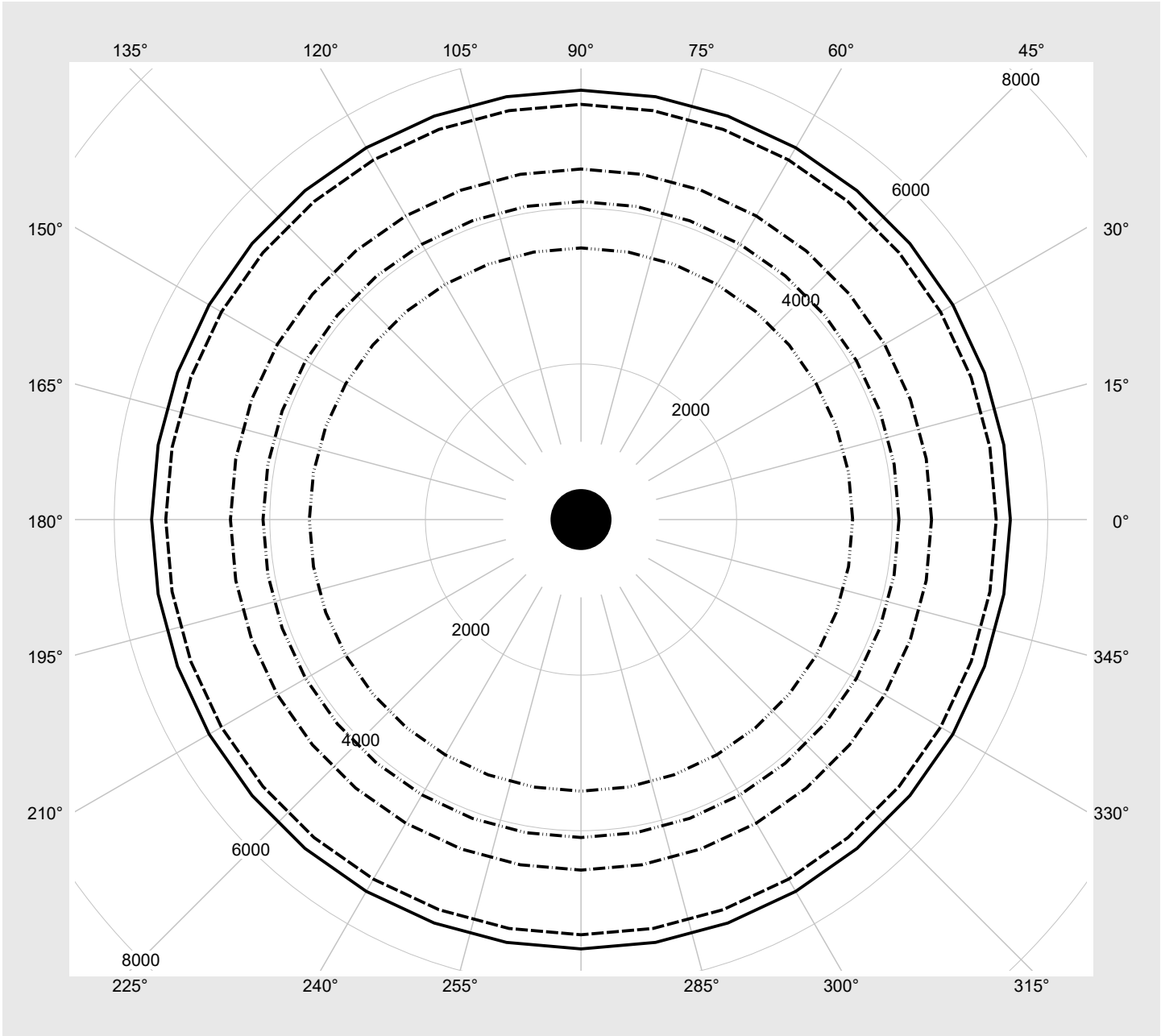
Luminance table	Max. for $\gamma \geq 65^\circ$	Photometric dimensions in mm: D = 82
------------------------	---------------------------------	--------------------------------------

C-planes	0°
γ	Luminance in cd/m ²
45,0°	8104.6
50,0°	6469.4
55,0°	5835.3
60,0°	5578.6
65,0°	5519.8
70,0°	5337.9
75,0°	4506.6
80,0°	4087.8
85,0°	3492.2

Photometric test report

Family Spot 21 Licross®	Order number: 51SL63MB11A2C EAN: 4069025502674	LP number 59936_33
-----------------------------------	---	------------------------------

Luminance values in cd/m² γ 65° γ 70° γ 75° γ 80° γ 85°



Photometric test report

Family Spot 21 Licross®	Order number: 51SL63MB11A2C EAN: 4069025502674	LP number 59936_33
-----------------------------------	---	------------------------------

Multilumen Table	environmental temperature: 25°C	sITeco
-------------------------	---------------------------------	---------------

DIP-Step	Switch Setting			Luminous flux [lm]	Power consumption [W]
	1	2	3		
0	OFF	OFF	OFF	3590	26.5
1	ON	OFF	OFF	3370	24.5
2	OFF	ON	OFF	3140	22.5
3	ON	ON	OFF	2900	20.5
4	OFF	OFF	ON	2670	18.5
5	ON	OFF	ON	2420	16.6
6	OFF	ON	ON	2170	14.8
7	ON	ON	ON	1920	12.9