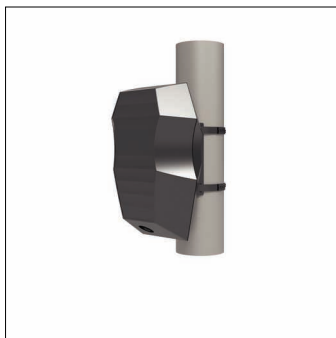


Order No.: 5EA3BEH01 | GTIN (EAN): 4058352641286

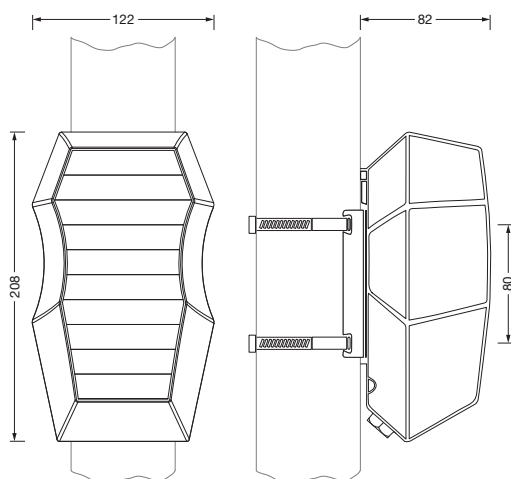
Product description: SConWi,MastBoxMotHigh



SITECO Connect Wireless Mast Box Motion High, sensor, communication: 2.4GHz, local mesh radio network, DALI, control: local setting and operation with USB stick, by movement, optionally via radio push button, sensor technology: 1 PIR movement sensor, Logarithmic DALI dimming curve preset. Can be switched to linear via software, installation type: surface-mounted, installation location: to mast, of plastic, voltage: 230V, voltage type: AC, PIR movement sensor, protection rating (complete): IP65, certification: CE, packaging unit: 1 piece, metal fastening straps not included in delivery

IP 65 CE

Wt. (kg): 0.8  
GTIN (EAN): 4058352641286



It is mandatory that the assembly instructions must be observed when planning and installing the electrical installation (to be found at [www.siteco.com](http://www.siteco.com))

Tolerances related to thermal, electrical and photometric data according to IEC 62722

Issued 09.04.2025 - Modifications and errors subject to change - Ensure that you always use the latest version -

**Order No.:** 5EA3BEH01 | **GTIN (EAN):** 4058352641286

**Detailed technical description:** SConWi,MastBoxMotHigh



#### Key data

- System family: SITECO Connect 31 Wireless
- Product type: sensor
- Product name: SITECO Connect Wireless
- Order No.: 5EA3BEH01

#### Lighting technology | Lamps | Control gear

#### Component 1

##### Operating device:

- Control: DALI, Logarithmic DALI dimming curve preset. Can be switched to linear via software

##### Certificates, Standards

- Protection rating: IP65
- Temperature range (operation): -25..+80°C
- Certification, designation: CE

##### Material, Colour

- housing: plastic, dark grey
- Colour specification: dark grey

##### Mounting

- Mounting method, mounting location: surface-mounted, to mast
- Mounting height: 6..12m

##### Electrical connection

- Nominal voltage: 230V, AC

##### Dimensions, Weight

- Weight: 0.8kg

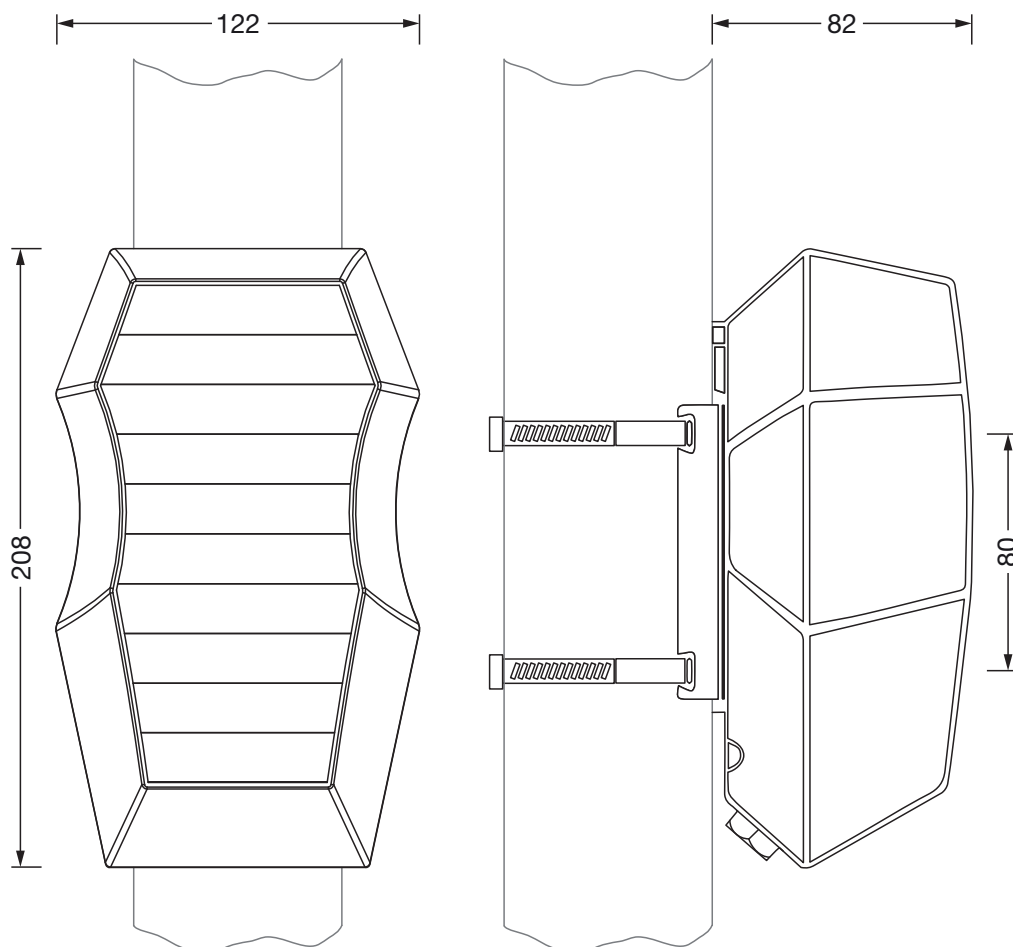
##### Inputs

##### PIR movement sensor

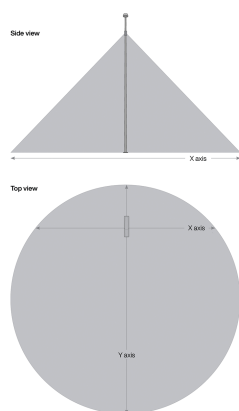
- Detection range: max. ø18m

Order No.: 5EA3BEH01 | GTIN (EAN): 4058352641286

Dimensions: SConWi,MastBoxMotHigh



Detection zone "Mast Box Motion High"  
5EA3BEH01



Mounting height	X axis	Y axis
7.0 m	11.9 m	12.4 m
8.0 m	13.6 m	14.2 m
9.0 m	15.3 m	15.9 m
10.0 m	17.0 m	17.7 m

It is mandatory that the assembly instructions must be observed when planning and installing the electrical installation (to be found at [www.siteco.com](http://www.siteco.com))

Tolerances related to thermal, electrical and photometric data according to IEC 62722

Issued 09.04.2025 - Modifications and errors subject to change - Ensure that you always use the latest version -