

**Order No.:** 5EA3BER01 | **GTIN (EAN):** 4058352982112

**Product description:** SConWi,MastBoxMoTraf



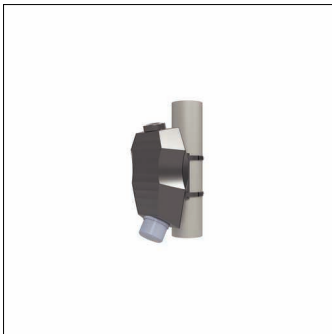
SITECO Connect WirelessMast Box Motion Traffic, radio, Radar Sensor, installation type: surface-mounted, installation location: to mast, of plastic, voltage: 230V, voltage type: AC, radar movement sensor, radio, 2.4GHz, protection rating (complete): IP65, certification: CE, packaging unit: 1 piece

IP 65 CE

Wt. (kg): 1.0  
GTIN (EAN): 4058352982112

**Order No.:** 5EA3BER01 | **GTIN (EAN):** 4058352982112

**Detailed technical description:** SConWi,MastBoxMoTraf



#### Key data

- Product type: sensor
- Product name: SITECO Connect Wireless
- Order No.: 5EA3BER01

#### Lighting technology | Lamps | Control gear

#### Component 1

#### Operating device:

- Control: DALI

#### Certificates, Standards

- Protection rating: IP65
- Temperature range (operation): -25...+80°C
- Certification, designation: CE

#### Material, Colour

- surface-mounted housing: plastic, dark grey
- Colour specification: dark grey

#### Mounting

- Mounting method, mounting location: surface-mounted, to mast

#### Electrical connection

- Nominal voltage: 230V, AC

#### Dimensions, Weight

- Length: 240mm
- Width: 122mm
- Weight: 1.0kg