

Intelligent Play.

making sport smart.



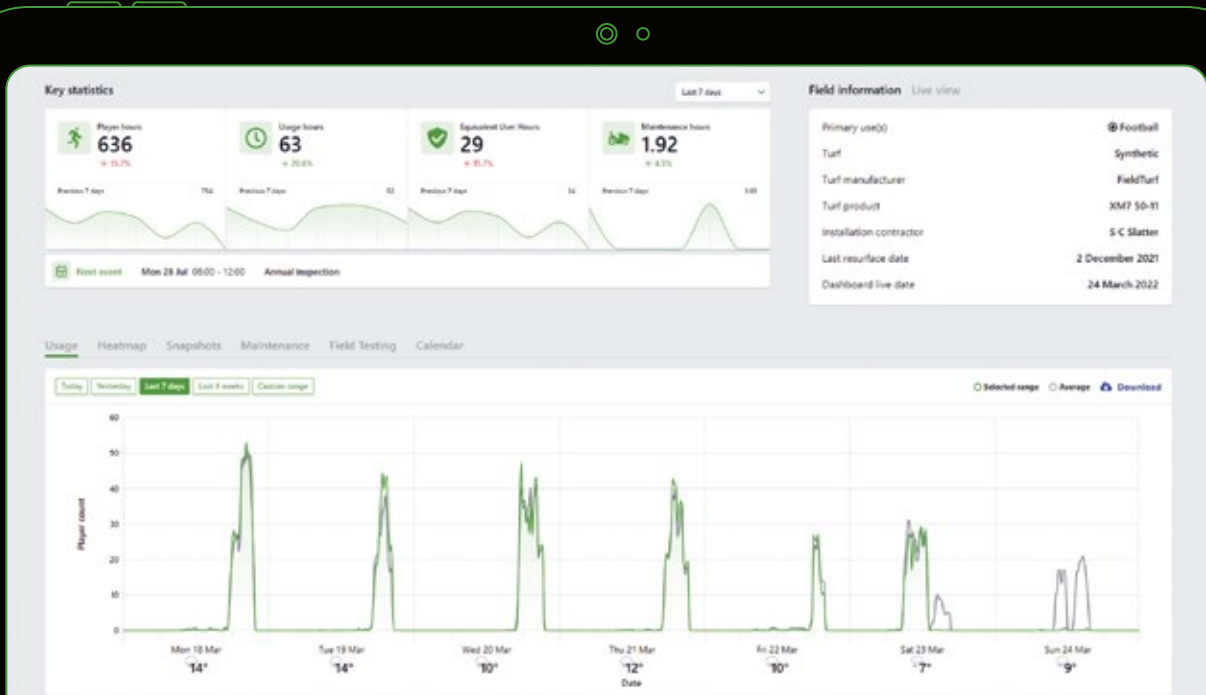
“The world’s smartest sports field”

Full transparency about the use of the field. Always keep an eye of the condition of your sports turf. Intelligent specifications and recommendations for maintenance. For perfect playing conditions, a longer service life, minimized risk of injury and sustainable operation. Intelligent Play is the revolution for your pitch. Using patented technology based on artificial intelligence, the use of the turf surface is analyzed in real time. The software provides automated recommendations for the care and use of the pitch. Because the turf is the basis for everything that happens – and at the same time an expensive investment.

A quantum leap for the operation and usage of sports facilities.

+2 years

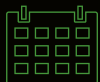
lifespan for your artificial turf





Play better.

Optimum playing conditions at all times thanks to precise real-time data on turf quality.



Last longer.

Extend the lifespan of your sports field thanks to real-time data insights about the condition of the field and automated maintenance recommendations.



Play safer.

Minimize the risk of injury to players by identifying exposed areas and planning appropriate maintenance and protective measures.



Be greener.

Maximum sustainability through efficient maintenance, increased productivity and extended turf life.



How does it work?



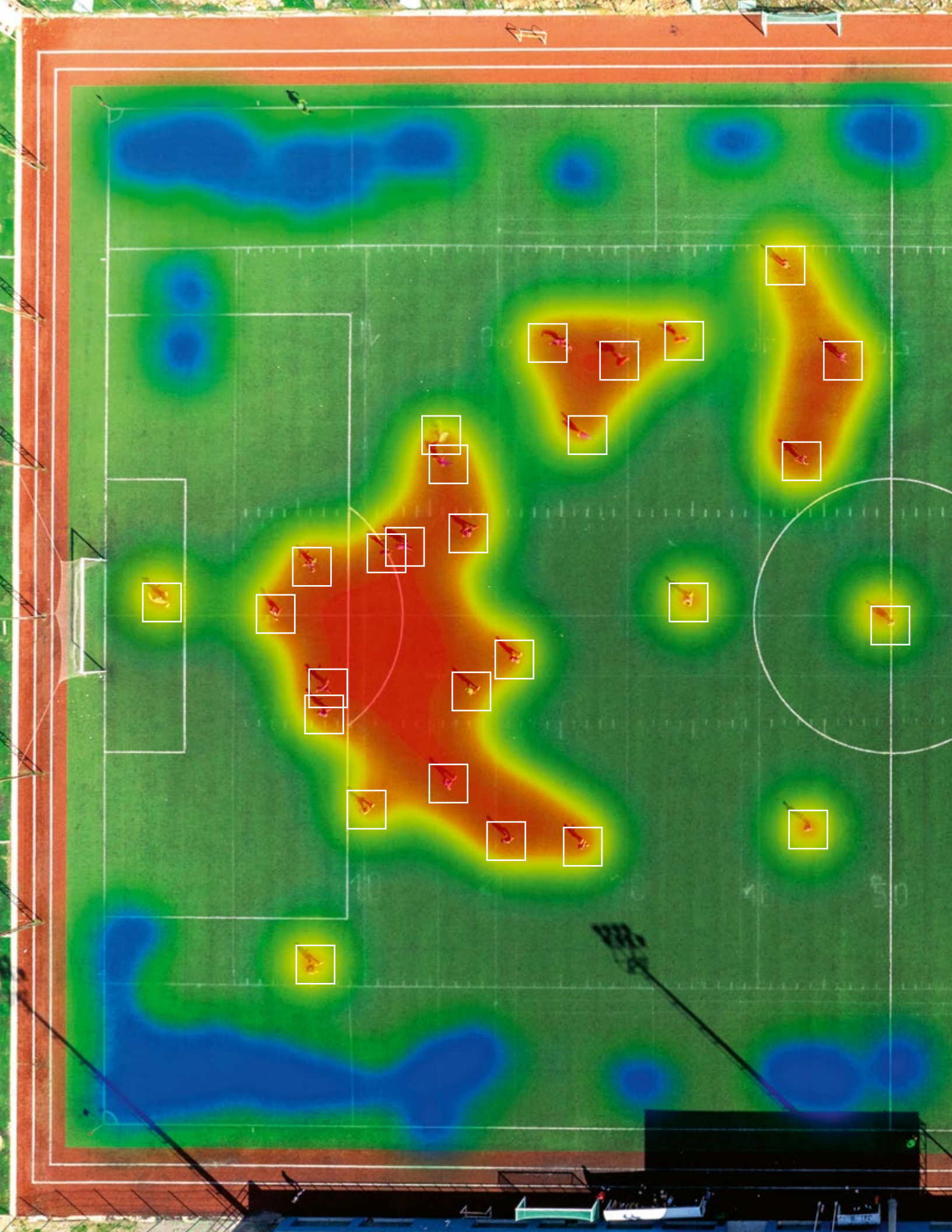
Patented technology using artificial intelligence and machine learning.

Advanced hardware: two small sensors to cover a full-sized field with low-voltage power supply.

Completely wireless – connected via a 4G signal and updated wireless throughout the life of the system.

Easy installation and can be retrofitted to existing lighting systems.

Comprehensive insights in the personal dashboard with automated monthly report.





Know what's happening on the sports field – in real time.

Get all the essential information and insights on field usage and maintenance directly in the dashboard. Stay in control of your facility's performance and ensure top safety on the field with real-time monitoring and easy-to-use tools for optimization.

Keep your fields in peak condition effortlessly!

Usage Overview

Field heatmap

Maintenance schedule

Snapshot view

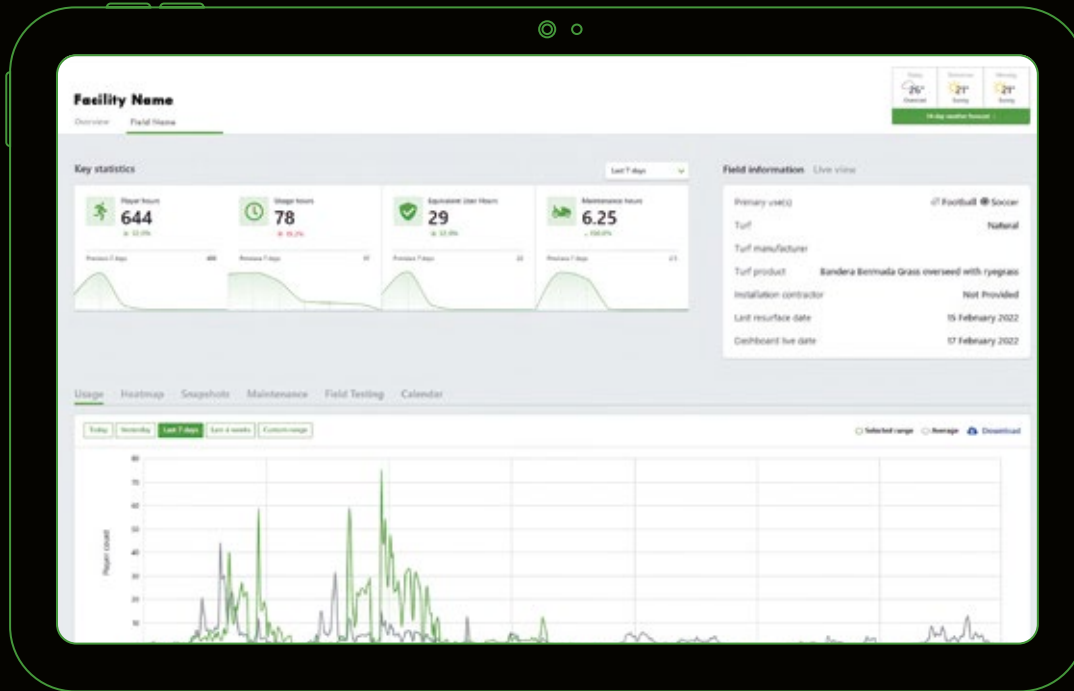
**Reporting functions to
generate custom reports**

Security Alerts

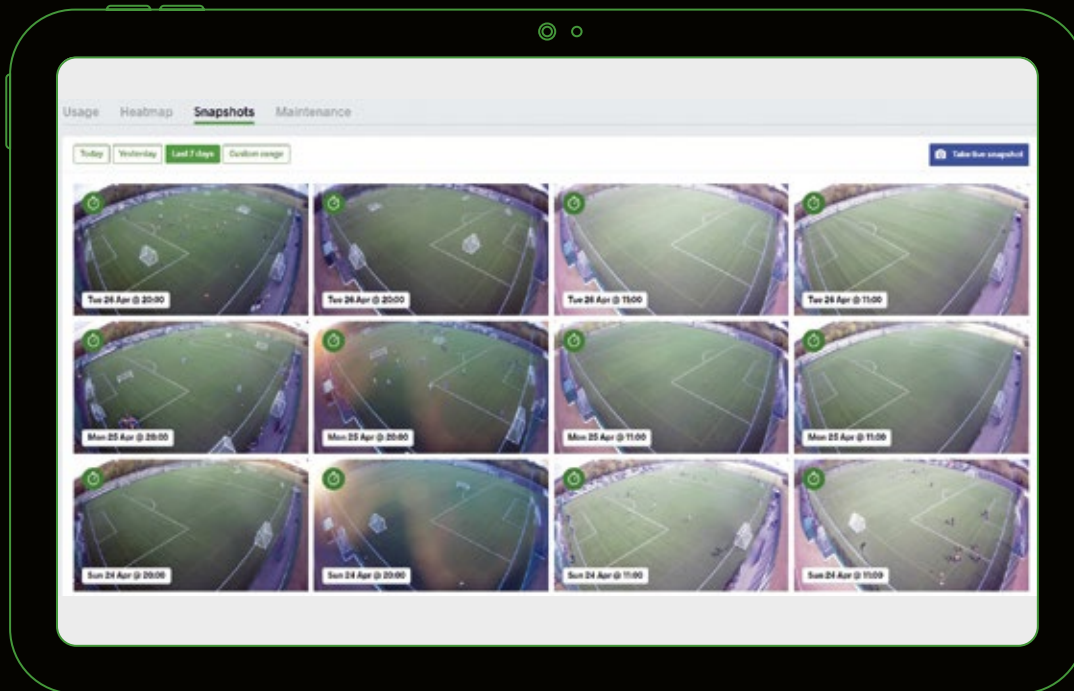
Maintenance Alerts

Weather Forecast

One Dashboard ...

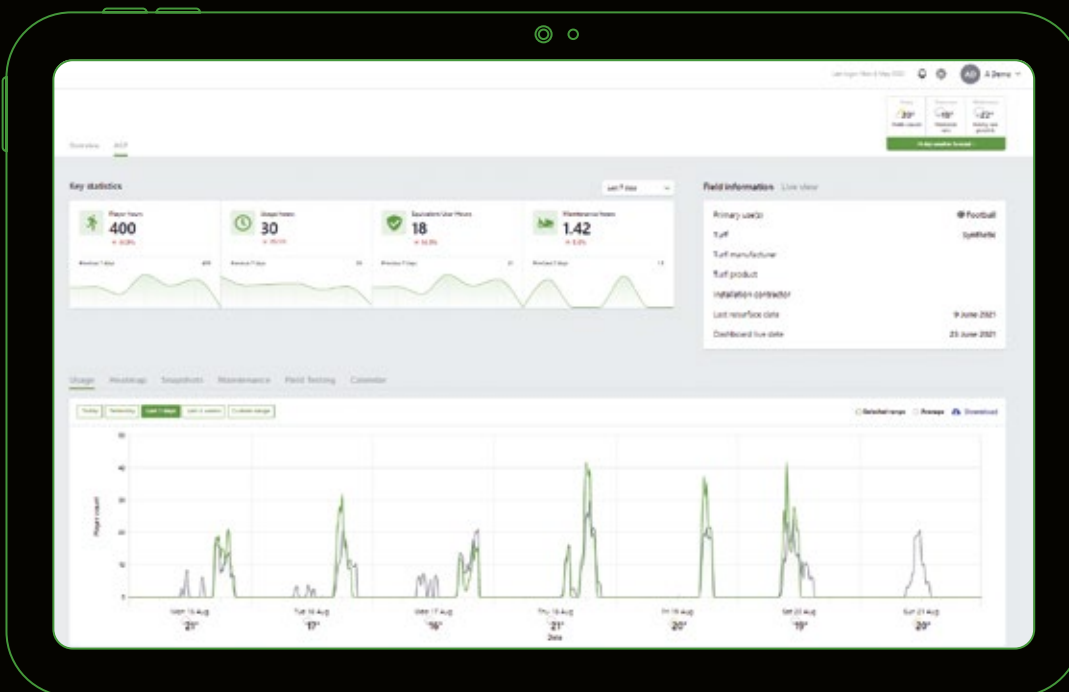


Overview: All important information at a glance. Customizable and in real time.

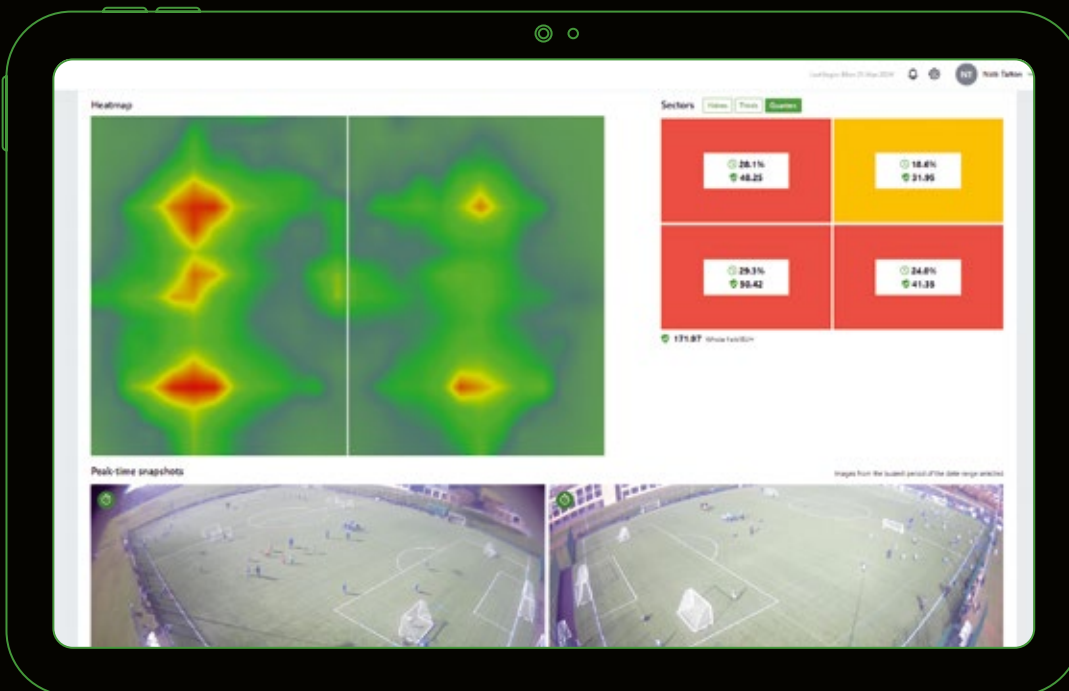


Snapshot view: The pitch in view at all times. For an increased sense of security.

... infinite insights.

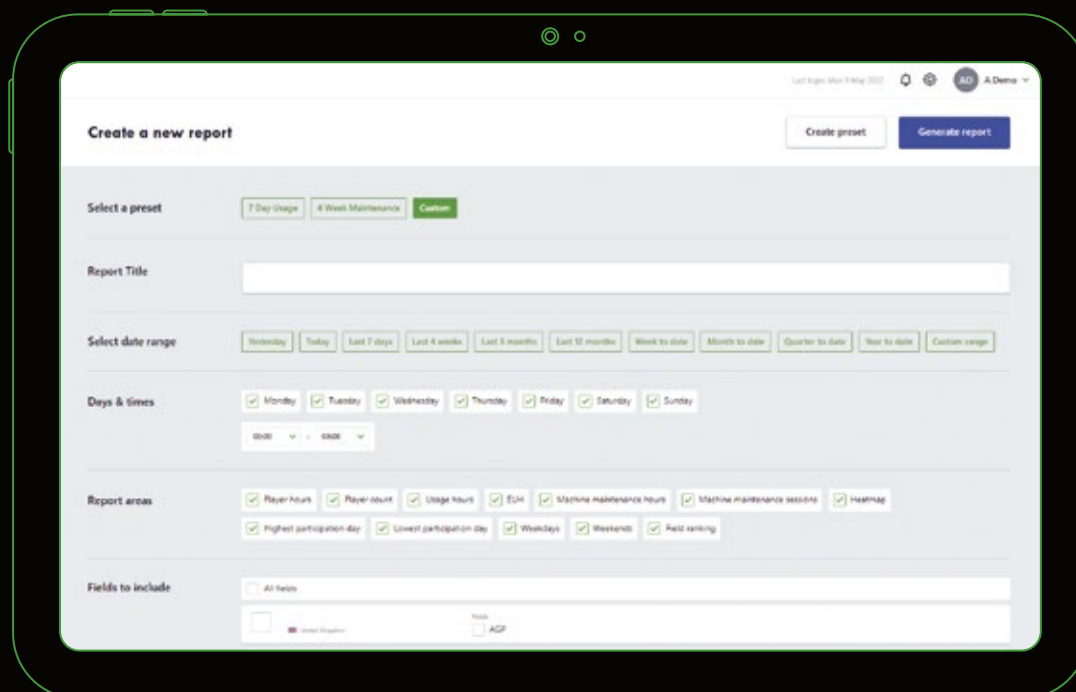


Usage overview: How many players are on the pitch? How long and when? You can find all the answers in the Usage overview.

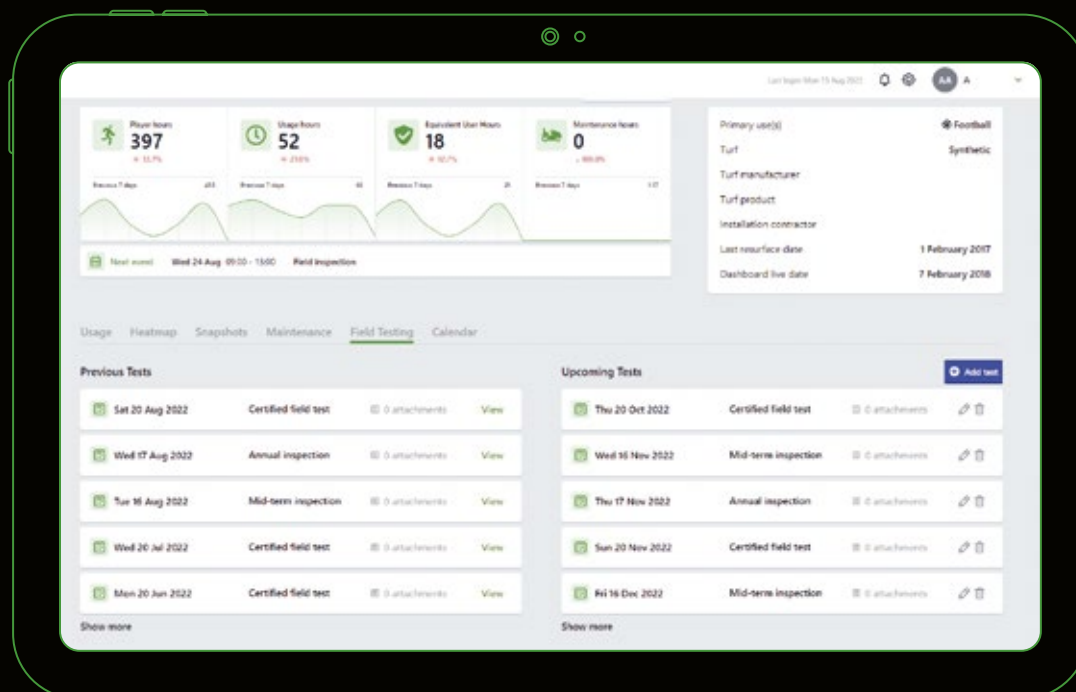


Field heatmaps: See areas subject to heavy wear immediately and plan your maintenance accordingly.

One Dashboard ...

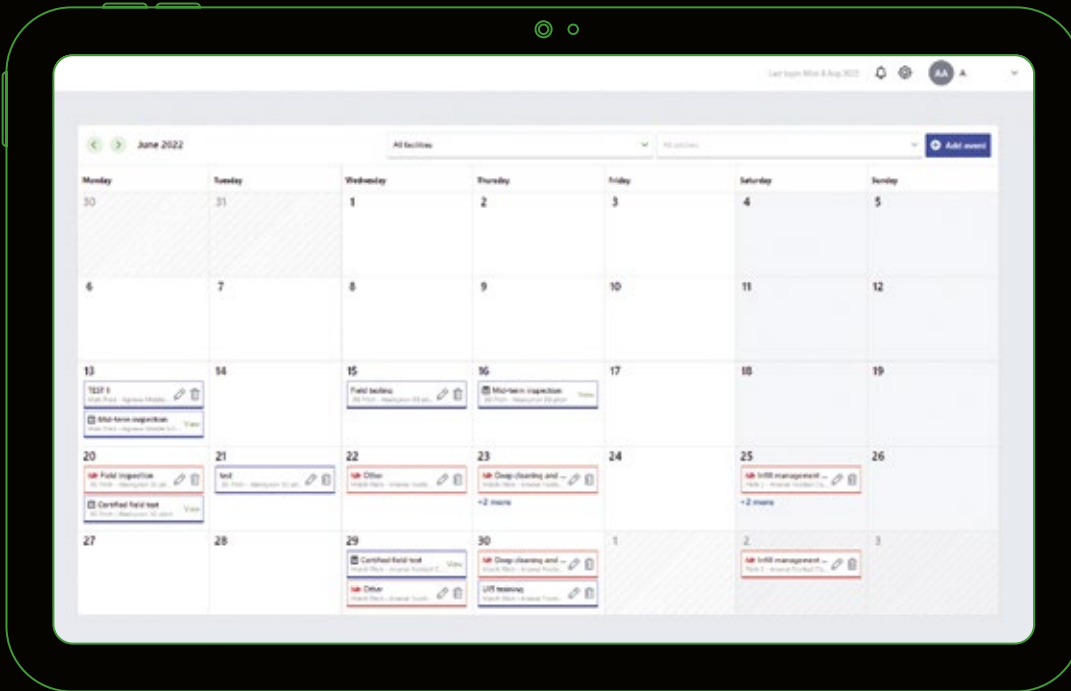


Custom reports: Create your own personalised report and have it sent to you automatically.

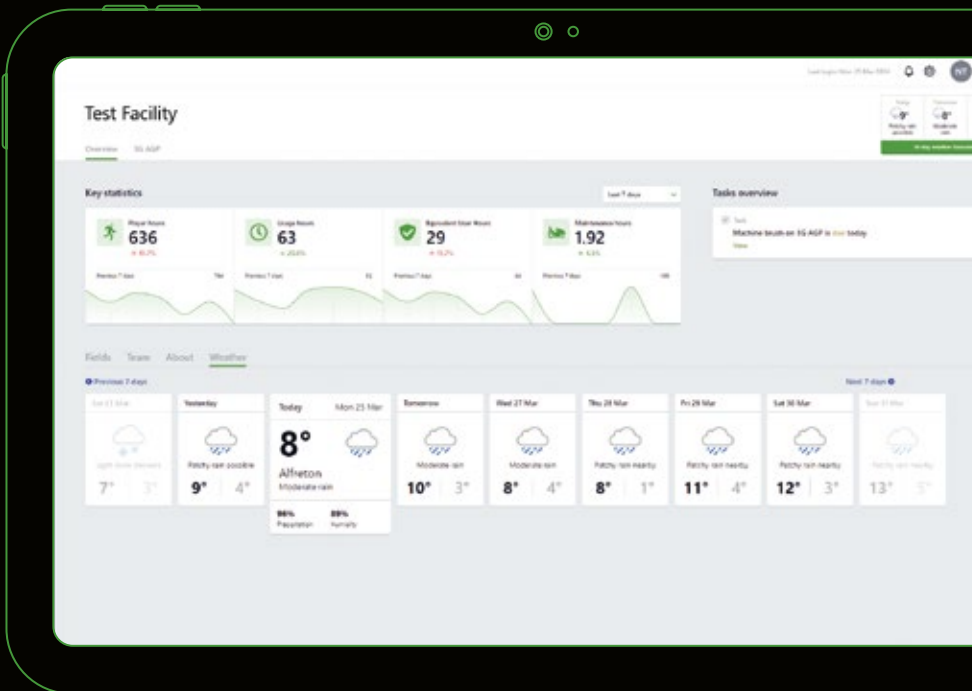


Field testing: Schedule and save test field data in one location to ensure easy access.

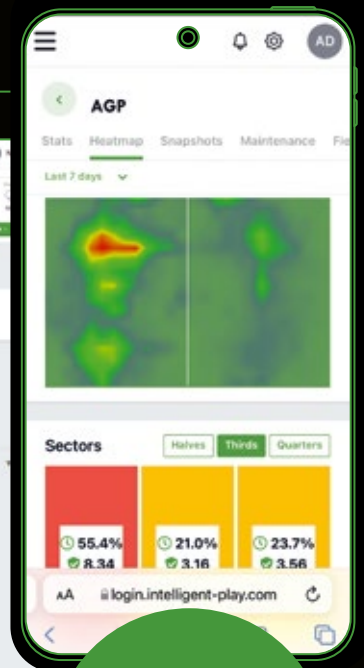
... infinite insights.



Maintenance schedule: All past and future maintenance at a glance. So nothing is overlooked.



Weather forecast: Detailed weather forecast for the next few hours and days.



Always with you:
The dashboard is also available on your smartphone.

Maintenance. For Safe and Durable Turf Fields.

Maintaining turf sports fields is vital for player safety, turf longevity, and optimal performance. Routine maintenance ensures a consistent and safe playing surface by keeping the infill evenly distributed, which extends the turf's lifespan and enhances the overall performance of the field.





Based on the agreed maintenance schedule, or when triggered by increased usage, automatic maintenance alerts through Intelligent Play will notify you when machine maintenance is required and the extent of the work needed. After completing the maintenance, an updated heatmap helps track the effectiveness of the maintenance activity. Additionally, a calendar and manual tasks are available to assist your team in planning and executing a comprehensive maintenance program.

Rutgers University

New Brunswick, New Jersey, USA

Rutgers, the Birthplace of College Football, began playing at the site of SHI Stadium on November 5, 1938. SHI Stadium is home to the Scarlet Knights who compete in the play in the Big Ten Conference.

"Intelligent Play has been a great asset for our department. The new technology enables us to be more efficient with our day-to-day tasks for team usage."

Matthew Colagiovanni, Rutgers University, Athletics Deputy,
Athletics Director, Internal Operations and Capital Projects



Zoo City Sportsplex

Asheboro, North Carolina, USA

The Zoo City Sportsplex is a premiere sports and events facility in North Carolina and features eight artificial turf sports fields.

“The City of Asheboro is beyond excited to have the Intelligent Play system installed at our new Zoo City Sports Complex which features 8 new FieldTurf fields. Intelligent Play will allow us to proactively maintain our new fields for years to come. The technology is seamless and easy for our folks to use. The installation process was also very easy.”

John Ogburn, City Manager, City of Asheboro, NC



Mercedes-Benz Stadium

Atlanta, Georgia, USA

The Mercedes-Benz Stadium in Atlanta is not only home to an NFL franchise (Atlanta Falcons) and an MLS team (Atlanta United FC) but it also hosts college football as well as a range of other events.

"Just the idea of Intelligent Play was impressive all around. To have something track the field, track all the usage and everything that crosses the surface from people to carts to equipment, the ability to take that and turn it into data and create maps of where we're getting heavy traffic use is music to my ears."

Nick Pappas, Field Manager, Mercedes-Benz Stadium



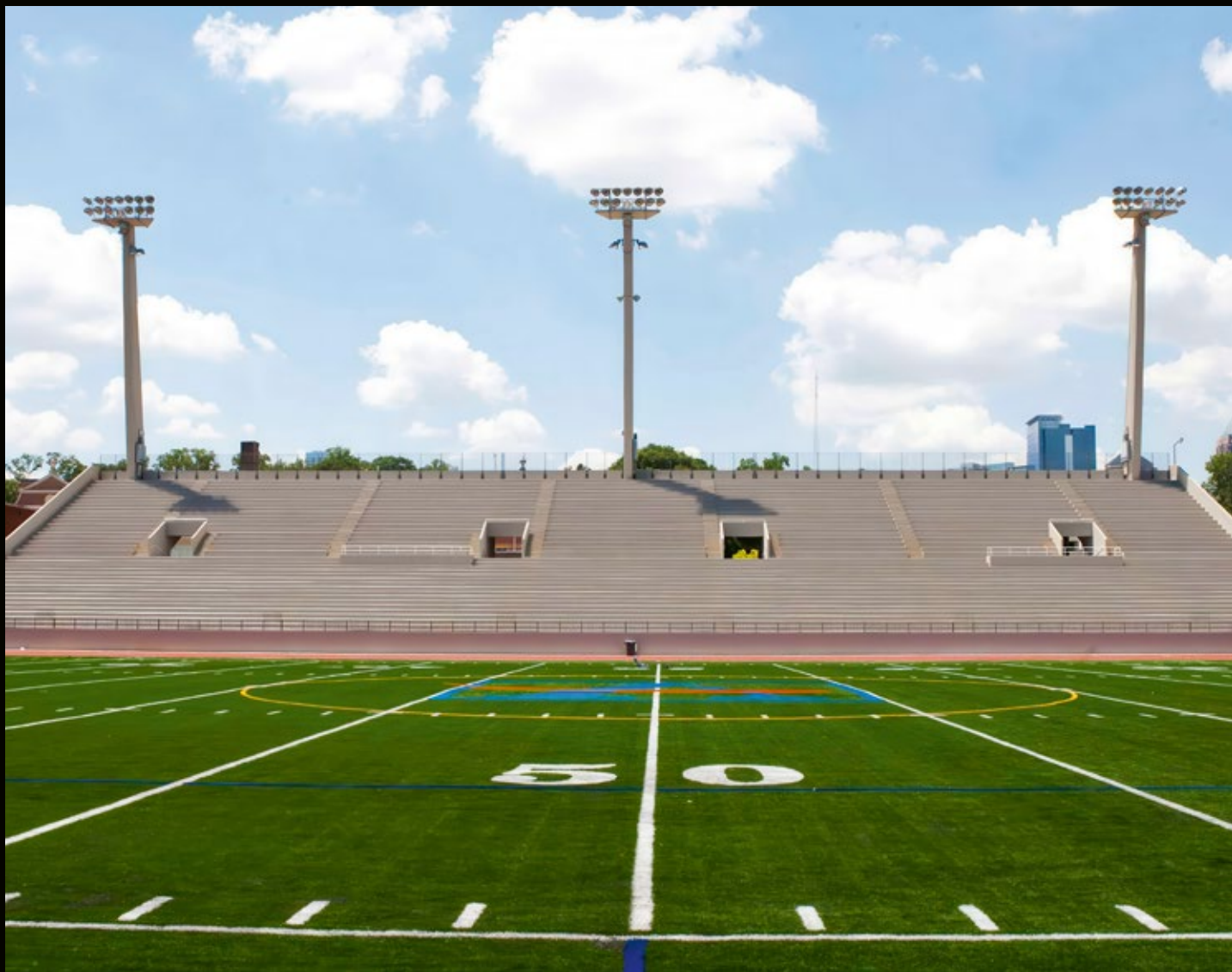
Atlanta Public Schools

Atlanta, Georgia, USA

Atlanta Public Schools (APS) is a public school district in Atlanta, Georgia, serving over 50,000 students across approximately 90 schools. APS is offering a variety of athletic opportunities for students across its middle and high schools. When Jasper Jewell first heard about Intelligent Play, he knew the system would be an ideal solution to help him manage the Atlanta Public Schools sports field at Grady Stadium.

"You can't beat it for the convenience and for what it gives you. It's going to definitely change your life and expand the lifespan of your field. And it makes your life as an athletic director that much easier."

Jasper Jewell, Athletic Director Atlanta Public Schools



Forest Recreation Ground

Nottingham, United Kingdom

The Forest Sports Zone in Nottingham was opened in 2015 following investment from the Football Foundation and the Premier League and is a busy, state-of-the-art facility managed by the Nottingham Forest Community Trust. After almost a year, the sensors on the 3G field have monitored more than 120,000 playing hours and more than 5,000 equivalent user hours. Facility Manager, Jason, explains that the results they receive from the system are fantastic, allowing them to track huge amounts of data and easily access graphs and results that can be shared with colleagues and management.

“As we are such a busy facility, we often only have small windows of time to compete pitch maintenance so using the heatmap to know exactly where to spend time more effectively is crucial. Being able to carry out maintenance in this way will also ultimately enhance the lifespan of the surface.”

Jason Spiring, Facility Manager, Forest Sports Zone



Racing Club Warwick

Warwickshire, United Kingdom

Racing Club Warwick are a football club based in Warwickshire who currently play in the Northern Premier League Midland Division. Intelligent Play was installed in 2021 for their new full-size 3G pitch which was part-funded by the Football Foundation.

“By having access to the Intelligent Play data it helps to ensure that we do not waste time or money brushing when it is not necessary. This will contribute to the playing surface’s longevity.”

Gary Vella, Chairman, Racing Club Warwick



Nick Talton

Operations Director

nick@intelligent-play.com

+44 (0) 7706 737111

Intelligent Play.