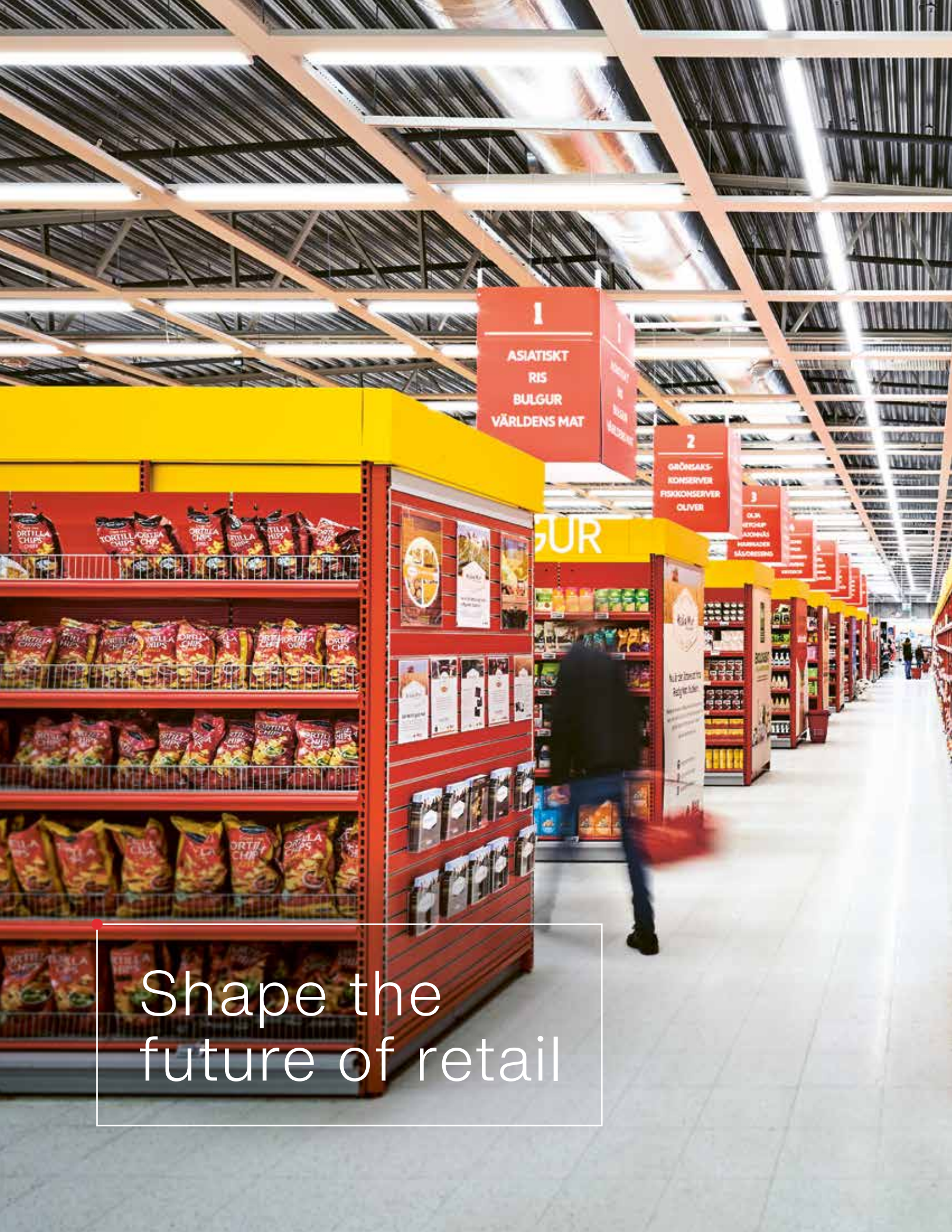


siteco



Future Retail.

We take responsibility for your light –
lighting technology designed and engineered in Germany.



1
ASIATISKT
RIS
BULGUR
VÄRLDENS MAT

2
GRÖNSAKS-
KONSERVER
FISKKONSERVER
OLIVER

3
OLJA
KRYDDOR
LÄSODLAR
MÄTTINGAR
MÖRRENING

BULGUR

Shape the
future of retail



MAXIKLIPP
ALLTID MINST 20% RABATT
SPARA 20%
10,- /kg
DURUMPASTA
Färdigkokt 400 g 2500 stycken
Ett paket 22,00 kr/kg

MAXIKLIPP
ALLTID MINST 20% RABATT
SPARA 20%
10,- /kg
DURUMPASTA
Färdigkokt 400 g 2500 stycken
Ett paket 22,00 kr/kg

REDSKAP
REDSKAP



Sustainability

Flexibility

Quality of life



Sustainability is more than banning plastic bags.

The public debate on sustainability in the retail sector is concerned primarily with product quality and packaging waste. However, as one of the largest energy consumers, the retail trade bears a far greater responsibility. A sustainable store concept with an optimized energy and CO₂ balance becomes the essential factor for success. Future-proof lighting technology enables a dramatic reduction in energy consumption, CO₂ emissions and operating overheads.

**SITECO stands for sustainable
lighting technology.**

The most obvious solution implemented for sustainability.

System efficiency is an essential component of the SITECO design for sustainability strategy. Lighting solutions with up to 200 lm/W in combination with multilumen technology are our pledge for maximum energy efficiency along with lowest operating costs. Intelligent technologies such as our unique CLOi luminous flux tracking further optimize power consumption over the service life and avoid excess-planning.

The Toom DIY store in Bad Saulgau, Germany radiates in new light with the Licross® trunking system and impressively demonstrates the effects of sustainable lighting technology:

70 %
energy savings by
converting to LED lighting





Project: Toom DIY store, Bad Saulgau, Germany
Product: Licross® trunking system



Project: Aldi Süd supermarket, Germany

Product: Modario® trunking system



Uncompromising reliability and minimum operating costs.

SITECO luminaires were developed for reliability and durability to the very last day. We offer the reliability that customers want – whether 50,000, 70,000 or up to 100,000 operating hours. Along with short delivery times and no tolerance for downtimes.

The design, developed for simple installation, enables low maintenance and disposal costs. In this way we create the ideal conditions for predictable operating costs, reduced installation complexity and also ensure extremely low total cost of ownership (TCO).

As confirmation of our pledge to performance and quality, we're exceedingly pleased about a special milestone:

1,000 Aldi stores equipped

Not limited to lighting.

Conventional lighting audits limit themselves to the lighting. We also consider the integration of beyond-lighting components. This is because cameras, loudspeakers and routers can be easily connected to the SITECO luminaire infrastructure. For you this means: less planning, installation and maintenance complexity for electrical cabling and network connections throughout the entire life cycle.

SITECO enables all scales, from pilot projects to a big step.

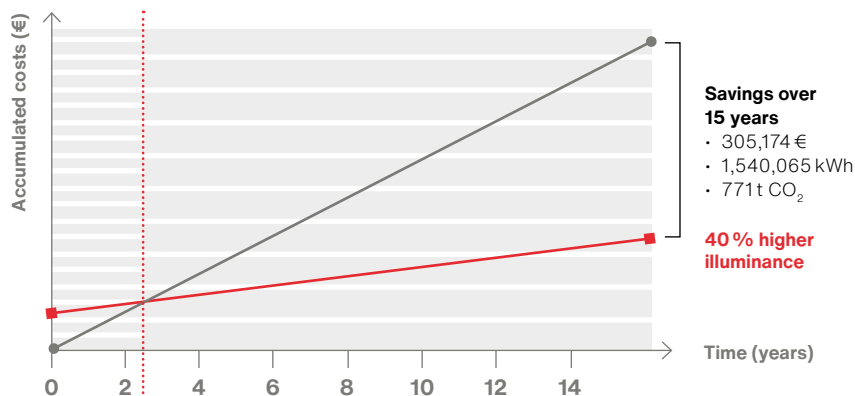
The SITECO audit provides complete transparency about the energy consumption and CO₂ emissions of your existing system.

Based on your requirements, we design an individual solution for you including the optional connection of beyond-lighting components.

The result: clarity on your cost and energy saving potential via an integrated infrastructure as compared to a single solution.

Total cost of ownership (TCO) comparative calculation for payback period

■ Licross® 9,000 lm
● 4 x 58W-ECG



New Licross® system amortized in **2.4 years**

siteco

TCO

	Existing system in the logistics center	SITECO solution
Luminaire type	4x58W-ECG	Licross Recessed 9000lm
System configuration		
Illuminance EM [lx]	ca. 500 (WF 0,67)	ca. 700 (WF 0,88)
Luminaire rated power [W]	218	55,4
Energy consumption		
Energy consumption / year [kWh]	138.753	36.082
Energy consumption savings [%]	0	74 %
Investment costs		
Investment costs [€]	0	57.876
Energy costs		
Energy costs over system service life [€]	418.354	108.400
Energy costs saved in %	0 %	74 %
Maintenance costs		
Maintenance costs over system service life [€]	60.818	7.722
Maintenance cost savings [€]	0 %	87 %
Total Costs of Ownership (Investment costs + energy costs + maintenance costs)		
Total costs over system service life [€]	479.172	173.998
Total cost savings in %	0 %	64 %
Payback time in years	0	2,39
CO ₂ saving over system service life [t]	0	771

TCO Calculator is an application of Siteco GmbH - Germany
© Siteco GmbH 2020



Sustainability

Flexibility

Quality of life



Merging of the digital world with over-the-counter trade.

The introduction of new technologies into sales spaces is unstoppable. Real-time marketing at the point of sale and digital analyses to increase impulse purchases are becoming an important component of successful store concepts. At the same time, the individualized zoning of sales areas creates decisive differentiating features. Everything requires an intelligent and flexible infrastructure. Maximum adaptability in the application and simplest compatibility through open standards are the basis for this.

SITECO stands for intelligent lighting solutions.

Customized lighting
in the corporate design.

Maximum individuality – just as required.

SITECO lighting solutions offer unimagined possibilities: whether this be general, zonal or accent lighting, whether spots, shelf or wallwasher applications. We have the system for your total flexibility. Today and tomorrow!

Even more individuality can only be provided with SITECO Customizing. Almost everything is possible, from the simple adaption of serial luminaires to special luminaire development.

On this basis, we have developed a solution together with Audi that showcases the design vocabulary of the product and architecture of Audi centers worldwide.





1

Project: Audi used car center Eching, Munich, Germany

2

Project: Audi center, Madrid, Spain

Product: Customized luminaires

Loudspeaker for communication



Sensor for AC regulation



Sensor for customer flow analysis



Camera for video surveillance





Digitization starts now.

For the stores of the future pure lighting concepts do not go far enough – what is needed are solutions in which the lighting system and data infrastructure merge. SITECO solutions enable the integration of various devices such as sensors, routers and cameras. Intelligently networked beyond-lighting solutions create new application options, ranging from the optimization of ventilation and air conditioning technology to the heat mapping of your customer flows.

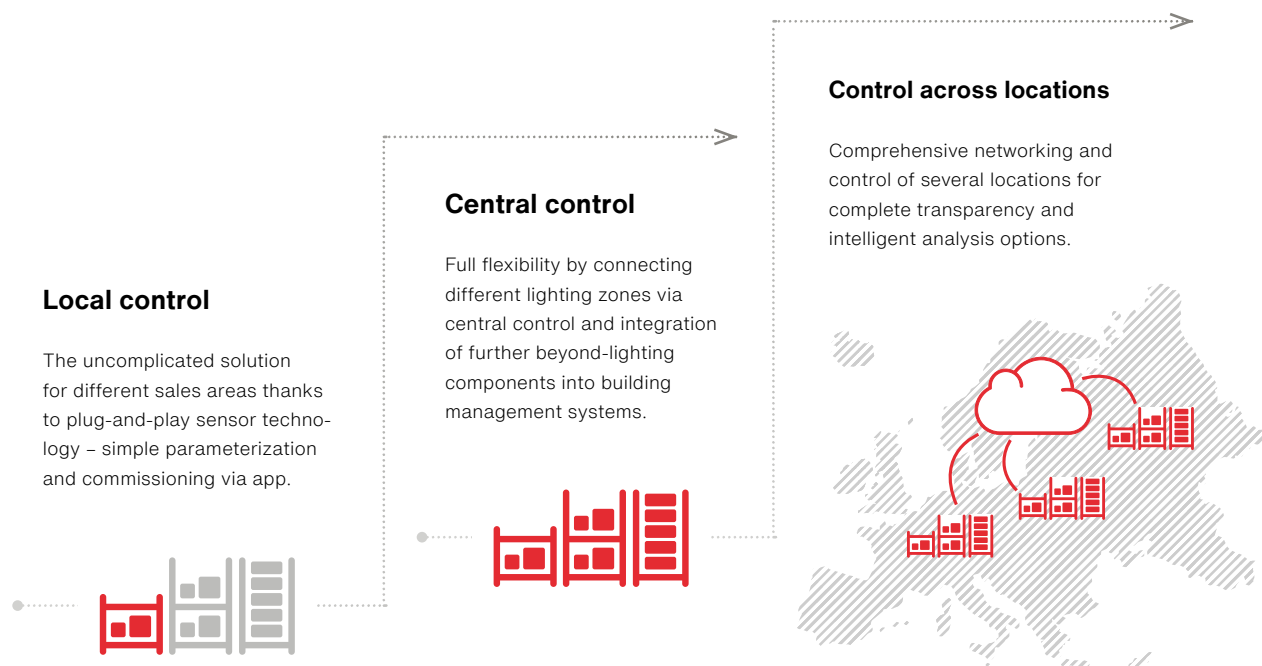
Together with the German-based supermarket chain Edeka we develop a digital concept store that strikingly demonstrates the added value of beyond-lighting. Through the integration of wireless technology, environmental sensors, cameras and loudspeakers, completely new possibilities are created:

Real-time marketing,
indoor navigation and
customer flow analyses.

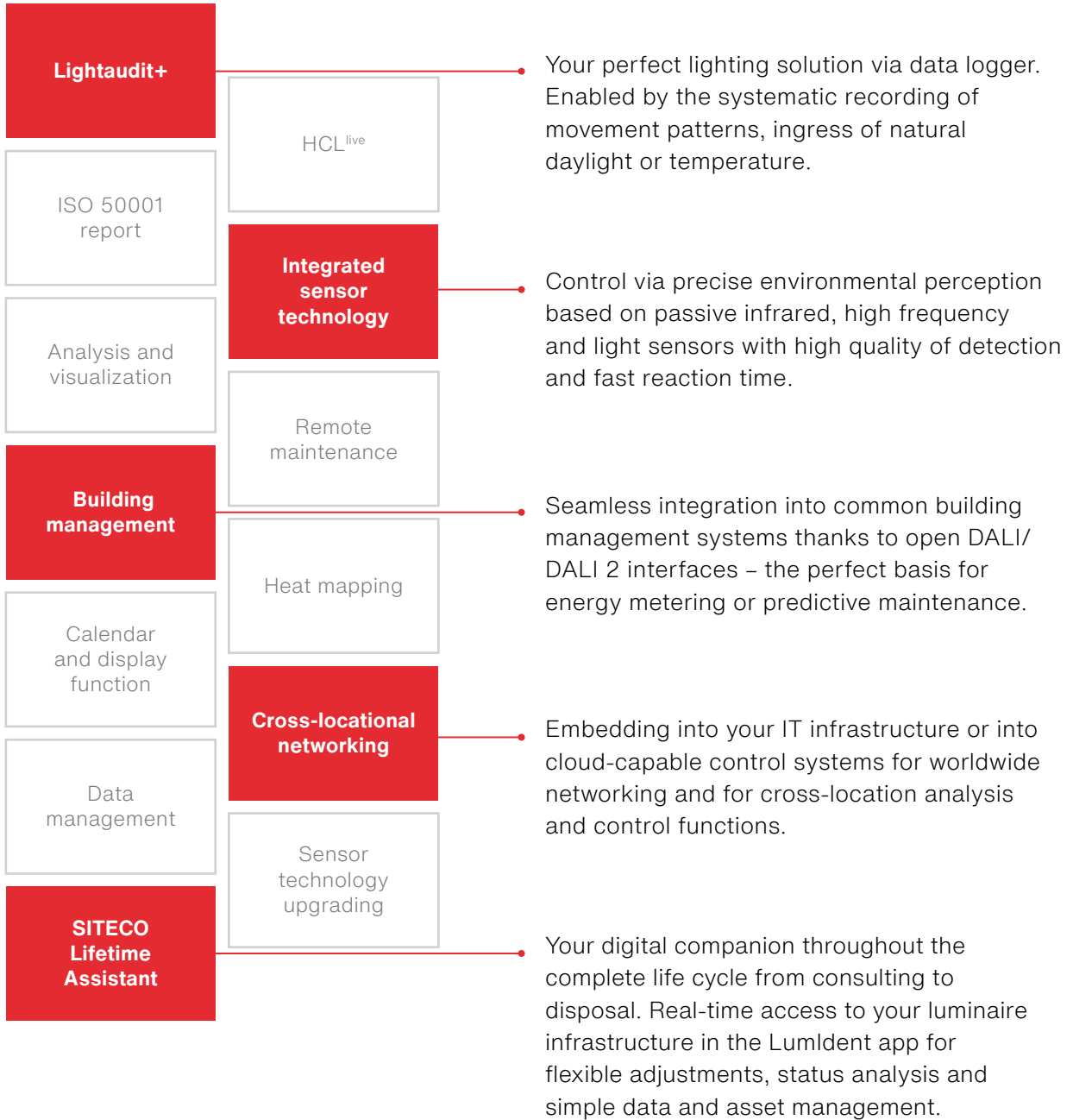
Not open for debate: Everything must be possible.

Now or later. We create the infrastructure that leaves all your options open. From the simple plug-and-play control to the fully integrated building management system and beyond-lighting technology – SITECO Connect delivers tailor-made solutions. And we accompany you through the entire process: Planning, programming and commissioning.

SITECO Connect for next-level digital solutions.



“Today we control locally, but soon across multiple locations.”





Quality of life

Sustainability
Flexibility



Attractive light turns shopping into an experience.

The over-the-counter retail trade is in competition with the internet. Individual service, the perfect display of merchandise and maximizing the feel-good factor are the unique selling propositions of retail.

The right lighting makes all the difference. Good light increases the quality of life, directs the eye and guides people purposefully through sales areas.

SITECO stands for best light.



The right technology for increasing the impulse buy rate.

Appealing merchandising display relies on maximum quality of light. In terms of technology this means: light with high vertical illuminances, outstanding glare control and uniform illumination for pleasant visual perception. Our unique optic technology with precise reflectors ensures perfect product presentations. Shelfwasher inserts powerfully accentuate shelf areas right into the furthest corners. Supplemented by specifically directed point light sources, an attractive overall concept is created with intentional guidance of the eye.

Thanks to advanced SITECO lighting, products at Müller drugstores radiate in a new light.

Perfect presentation of merchandise through outstanding lighting and optic technology from SITECO.





①

Project: Müller drugstore, Mannheim, Germany

②

Project: Müller drugstore, Heidelberg, Germany

Product: Lunis®



Project: ICA Maxi, Jönköping, Sweden

Products: Modario® trunking system, Apollon®, Monsun® 2



Coordinated lighting scenes to maximize the feel-good factor.

The perfect place for browsing and shopping.

Customers demand experiences – especially during shopping. The over-the-counter retail trade must present itself anew and become a place for browsing and lingering. The right combination of color temperature, illuminance and light dynamics creates a unique atmosphere and maximizes the feel-good factor. Nuanced lighting scenarios for fruit racking, deli counters and other store areas create the appropriate setting for increasing confidence in the products.

SITECO offers the right lighting technology for this purpose along with the required expertise in implementation: planning, configuration, installation and programming from one source, ideally matched to your individual circumstances.



- With our HCL^{live} configurator, together we make complexity manageable and the solution tangible.
- We know which questions to ask: from individual store layout to the product displayed.
- The result: precisely fitting parameters for optimized control of color temperature, illuminance and light dynamics for the specific sales zones.

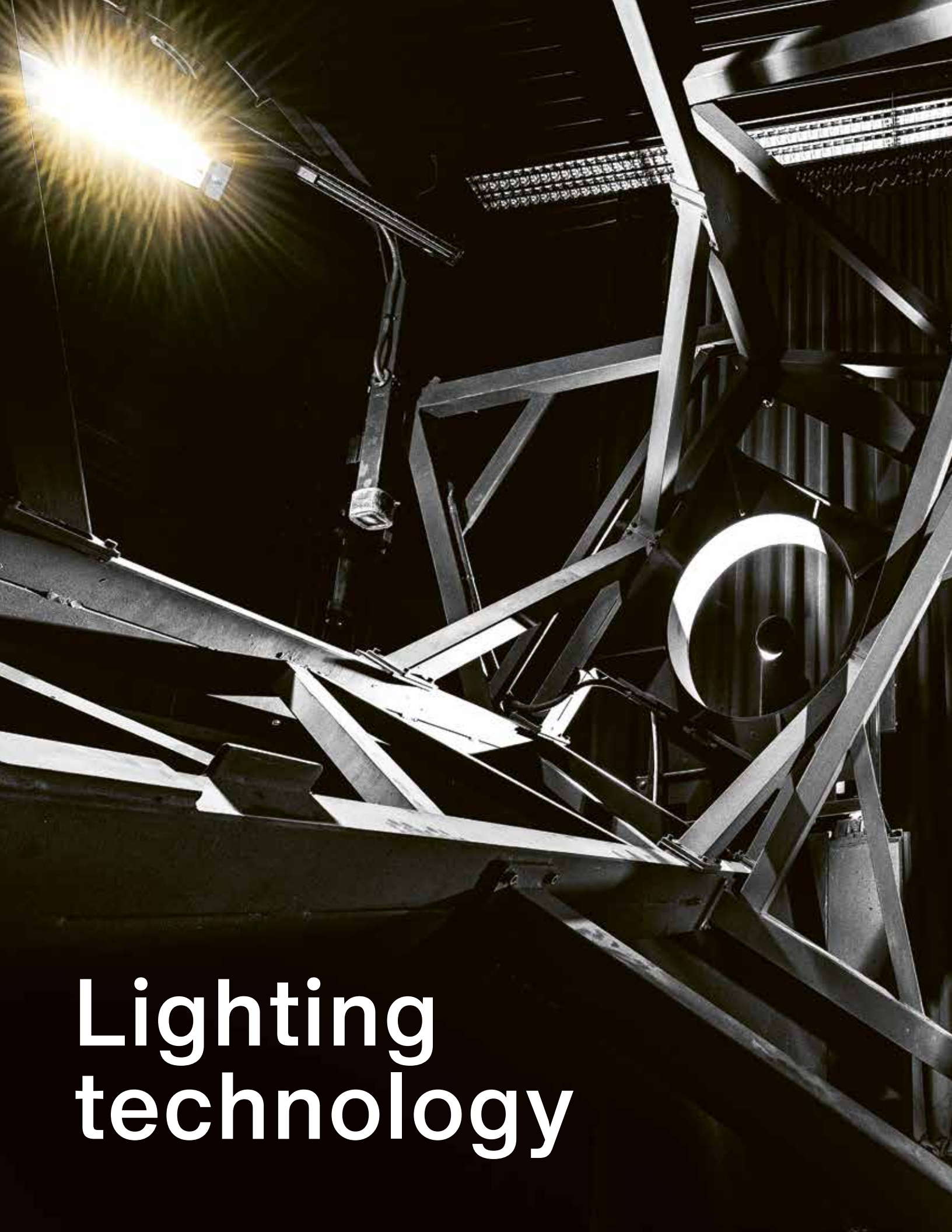
Let light act on us.

Adaptive lighting is required for individual lighting scenes and also opens up additional possibilities: ranging from lighting dependent on the season or peak times to the zonal use of Human Centric Lighting.

We've developed an approach that takes into account all relevant factors for maximum effect in your individual application scenario: SITECO HCL^{live}.

During the process we support and accompany you, ranging from holistic planning and piloting to installation and fine tuning.

SITECO HCL^{live} is a new dimension of light.



Lighting technology



We admit it, we
have a passion
for lighting
technology.

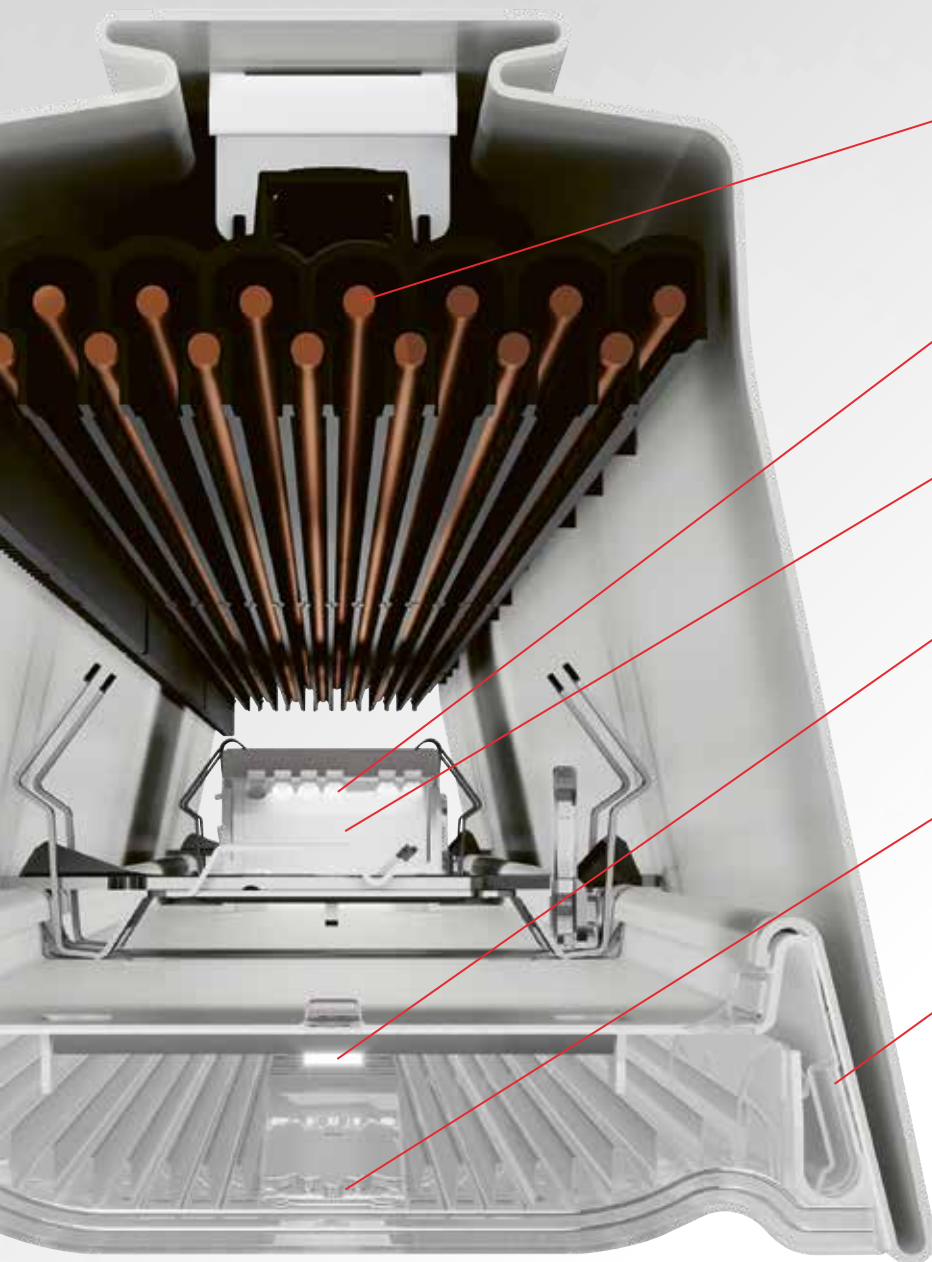
SITECO is a pioneer in technology with more than 150 years of experience. CLO 2.0, full cut-off, free-form reflector technology with a globally unique silver coating process. We stand for more than 200 patented lighting technologies with diverse application options for you and your future. We also offer you complete luminaire development from a single source – from the optics to mechanics and thermal design and right up to the control electronics. The perfect integration of hardware and software designed and engineered in Germany.

**SITECO stands for exceptional
lighting technology.**

Licross® Trunking

14 cores and full flexibility are a must-have for tomorrow.

45 years of experience – trunking *Made in Germany* perfected in our new Licross® trunking system.



14 cores for optimal networking, diverse enhancements and integrated emergency lighting – and easy to install with a simple click system

System service life up to 100,000 hours for sustainable and plannable investments

Maximum photometric efficiency of up to 200 lm/W for low operating costs and quick payback times

With adaptive lighting technology for various lighting scenarios in different sales areas and as an ideal basis for HCL^{live}

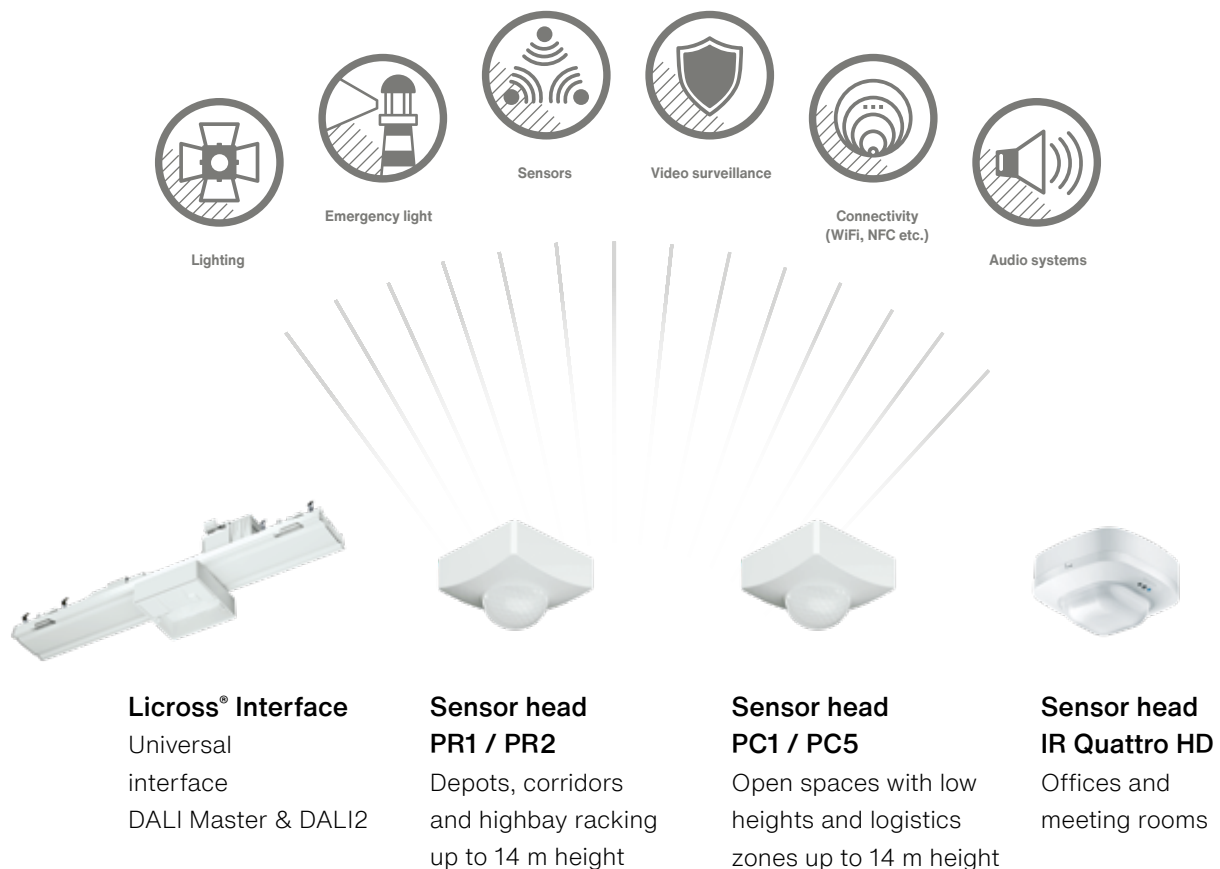
One-for-all concept with versatile luminaire inserts – the universal basis for basic lighting, product presentation and customer guidance

High illuminance levels and powerful spots for ideal shop lighting

14 cores for a new level of networking.

Free lines in the Licross® trunking system enable ultra-fast data transmission to the device of your choice. Standardized Ethernet sockets installed by us in the trunking system enable the connection of a wide range of IT equipment such as cameras and audio systems thanks to a well thought-out family concept.

This enables you to bundle smart technology on the luminaire and thus optimize the space and appearance of your building ceilings. You simultaneously reduce the complexity of the systems control and can reduce the fire load of your building.



Licross® luminaire inserts

The right technology for any application in one product family.

Whether general, zonal or accent lighting or spotlights, shelf or wallwasher applications. Licross® luminaire inserts offer the greatest possible scope for configuration with precisely matching results. Additional customizing options allow even more flexibility.



Licross® Spot

- Powerful, point-based light sources for brilliant scene-setting and optimized light distribution
- Exceptional accentuated lighting due to sophisticated optics and color temperatures for shelves, wall surfaces and aisle illumination

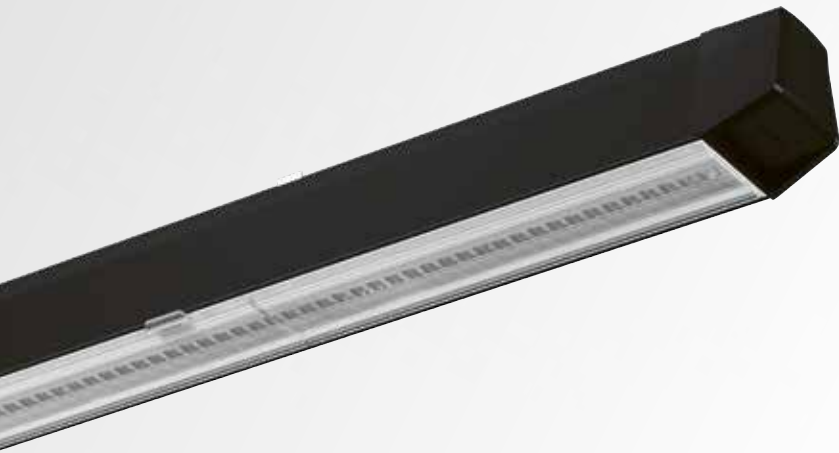


Licross® wall / shelfwasher

- Accentuated lighting and outstanding color rendering for attractive product presentations
- Harmonious housing design with a slender shape and simultaneously high flexibility due to numerous configuration options

All inserts are available in the following colors:





Licross® Recessed

- Simple path to illumination according to your specific needs due to many different light distributions
- Uniform design thanks to rail-flush integration



Project: Toom DIY Store, Bad Salgau, Germany

Product: Licross® trunking system



> **900** lx
illuminance on shelf
level at viewing height

Light for the best offers.

Reflectors are typically aluminized. Not at SITECO though – in our globally unique process we coat our reflectors with silver. With our advanced reflector technology your merchandise is displayed in perfect light – ultra-precise and highly efficient.

● Our many years of experience with optical systems are perfected in the shelfwasher: sophisticated reflector technology enables extremely precise light distribution as well as excellent glare control for maximum visual comfort.

● Four single silver-vapourized reflectors direct the light of the Licross® shelfwasher onto the shelves, perfectly dosed and with maximum efficiency. The light head is pivoted and can be used for fine adjustment.

● Not only is the display visually attractive but also the solution itself. The electronics and mechanics of the shelfwasher are integrated into the Licross® trunking rail.

Modario®

A trunking system for universal use.

More than one million installed luminaires make Modario® one of our greatest successes. Flexibility and quality have always been important for us. Updating your existing system with state of the art luminaire inserts enables you to dramatically cut your costs and CO₂ emissions.

- Wide range of variants due to modular system with a large number of luminaire inserts for maximum flexibility

- Highly efficient LED inserts with up to 170 lm/W – also suitable for replacing conventional luminaire inserts in existing Modario® systems for simple exploitation of energy-saving potential

- Luminous flux tracking and multilumen capability also with On/Off models for lighting solutions tailored to your needs

- Can be used in dusty and dirty environments and fire-risk locations due to IP64 and D-symbol

- Prismatic frosted optic for low glare and high visual comfort





Product: Modario® trunking system



- Multilumen technology with luminous fluxes up to 12,000 lm for maximum adaptability

- Highly robust with IP66 protection rating and suitable for outdoor use in ambient temperatures up to 50 °C

- Simple maintenance and easy upgrading of sensors due to tool-free opening of the luminaire

- CLOi also with On/Off models for standard-compliant lighting over the complete service life without over-planning and for optimized energy consumption

- Durable and reliable with service life up to 100,000 hours

Monsun[®]

The next level of damp-proof lighting.

The future-proof damp-proof luminaire – reliable, robust and with upgradeable intelligence.



- Durable and reliable with service life up to 100,000 hours
- Optional sensor technology for light control depending on movement and available daylight

- Ready for a wide range of applications due to various construction sizes with lumen packages up to 64,000 lm, a range of light distributions and different mounting options
- Highly efficient lens-based optics system with high lumen-output LEDs and up to 177 lm/W

- Highly robust with protection class IP65 and impact resistance up to IK08, as well as ambient temperature-resistant to 70 °C
- High visual comfort due to very good glare control with UGR < 22

High Bay

A new era for highbay lighting.

The universal hall lighting solution with a view to the future – both as a stand-alone luminaire as well as integrated in the Licross® rail system.



Project: Bork, Langgöns, Germany

Product: Floodlight FL 20

Floodlight FL 20

The all-purpose solution for car park and planar lighting.

This floodlight family is characterized by high efficiency and optimized light distribution.

- Avoidance of light spill and glare due to design as a wide beam floodlight with 0 % light emission up to an inclination of 15°
- Very long service life of up to 100,000 hours thanks to optimal heat dissipation via cooling ribs for predictable investments
- Optimized thermal management due to decoupling of module and housing for minimum luminous flux degradation and reliable operation
- Very robust due to IP66 protection rating and vibrational stability tested with over 250,000 strikes
- ESD-protected plug-and-play modules for easy maintenance and low maintenance costs
- Optical cover made of glass, corrosion protection class C4 with microcor® screws and non-yellowing PMMA lens material for increased durability



Streetlight family

- Especially durable thanks to robust diecast aluminum housing (IP66/IK09) with optimum heat dissipation, ensuring more than 90 % residual luminous flux after 100,000 hours of service life

- Highly efficient LED technology and tool-free opening for quick maintenance of the luminaire for low operating costs

- Digital interface for automatic communication when replacing ECGs or modules – no need for resetting or pre-parameterization

- High flexibility due to several sizes and optics as well as various light colors and housing colors

- Maximum visual comfort on the road: precise, uniform and glare-free illumination via HD faceted reflectors with patented silver coating

- Future-proof configuration thanks to various control options, intelligent dimming function, CLO 2.0 and open interfaces for Smart City applications, along with modular design for component upgrades



Streetlight SL 11

Undisputedly the top model in technical streetlighting.

A modern design with outstanding light, efficient performance, reliable operation and intelligent control.



Streetlight SL 20

A smart concept for strong performance.

The efficient multitasking with a well thought-out product concept – for a wide range of applications from cycle paths to multi-lane main roads.

- Sustainable module approach for easy replacement of the upper part of the luminaire as a complete module at the end of the long service life of 100,000 hours
- Precise illumination thanks to innovative lighting technology based on PMMA lenses and a wide range of different light colours and distributions – also suitable for customer-specific versions
- Sights set on the future: state-of-the-art lighting control and wireless networking through optional Zhaga interface as the basis for future Smart City applications

Streetlight SL 30

Pragmatic, efficient, well thought out.

The practical solution for modern street lighting from residential areas to motorways.

- Durable and robust: stable die-cast aluminium housing (IK09) with optional double coating and easy to clean ESG glass
- Simple and sustainable design for quick installation and secure ECG replacement
- Four sizes for relevant main applications in all lighting classes and various light colours for different design approaches

Streetlight SL 40

The uncomplicated partner for technical street lighting.

Cost effective but yet durable and efficient solution for comprehensive light infrastructures in cities and towns.

- Three sizes, a standard light distribution and programmable lumen packages for appropriate flexibility
- Designed for efficiency in all areas: uncomplicated assembly and installation, cost-effective operation, uncomplicated storage
- Autonomous dimming and AstroDIM function with an easily programmable preset during commissioning



Adaption.

Modification of series luminaires

- Changing the light color and color rendering
- Changing the housing dimensions, colors and mounting accessories

Combination.

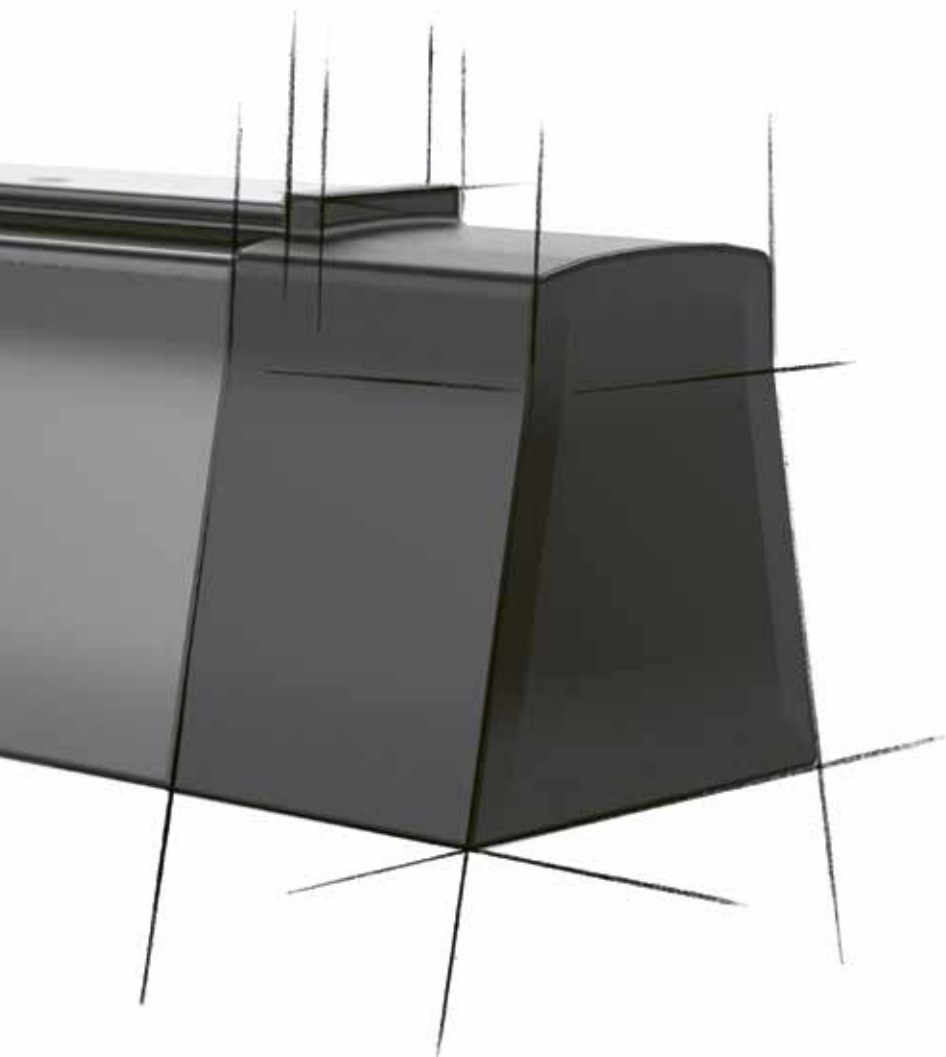
Modular construction system

- Versatile combinable systems for your project solution
- Modular SITECO optic platforms as the basis for your project luminaire

Creation.

Special luminaire development

- Concept development and project management
- Construction planning and special luminaire construction with an experienced development team



800,000
customized
luminaires

in over 1,000 projects

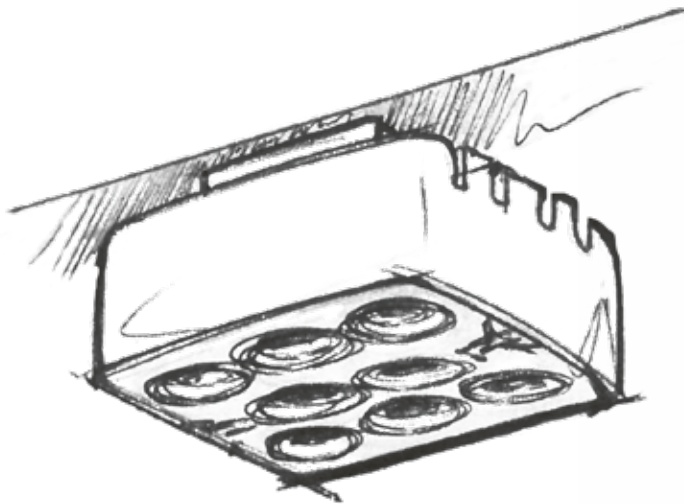
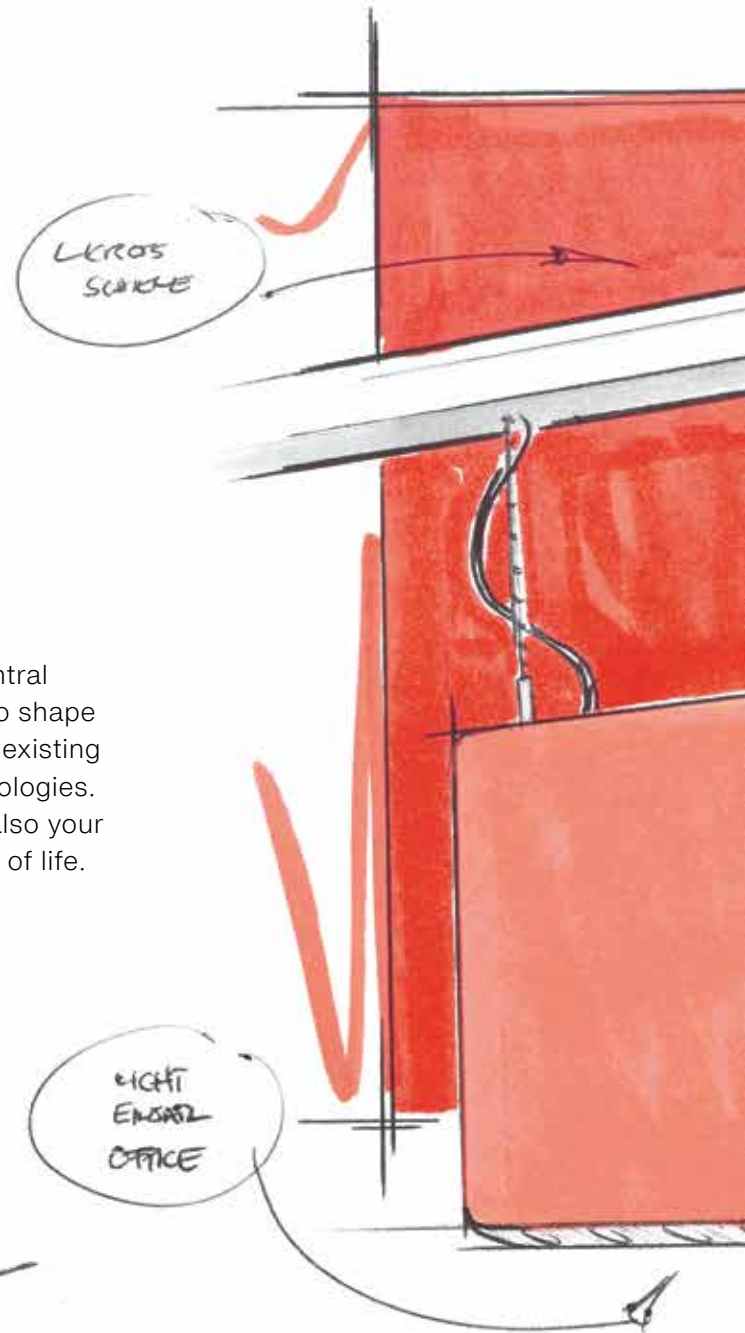
Ideal customer
proximity via flexibility
and speed.

When the options in the catalogue end, the almost infinite variety of customized options begin.

SITECO offers a wide spectrum of customized solutions thanks to its experienced team of designers and engineers. *Made in Germany* also means we provide additional flexibility and speed.

SITECO future. Thinking about tomorrow today.

Continuous development and improvement is a central component of the SITECO DNA. Our approach is to shape tomorrow's themes today, from the optimization of existing solutions to the development of new lighting technologies. This is our promise for your future capability, and also your plus in terms of sustainability, flexibility and quality of life.





Lighting solutions



One of many topics for you, but for us it's everything.

Outstanding lighting technology provides the perfect foundation. In addition, our claim is to also make a significant contribution to the future viability of our customers.

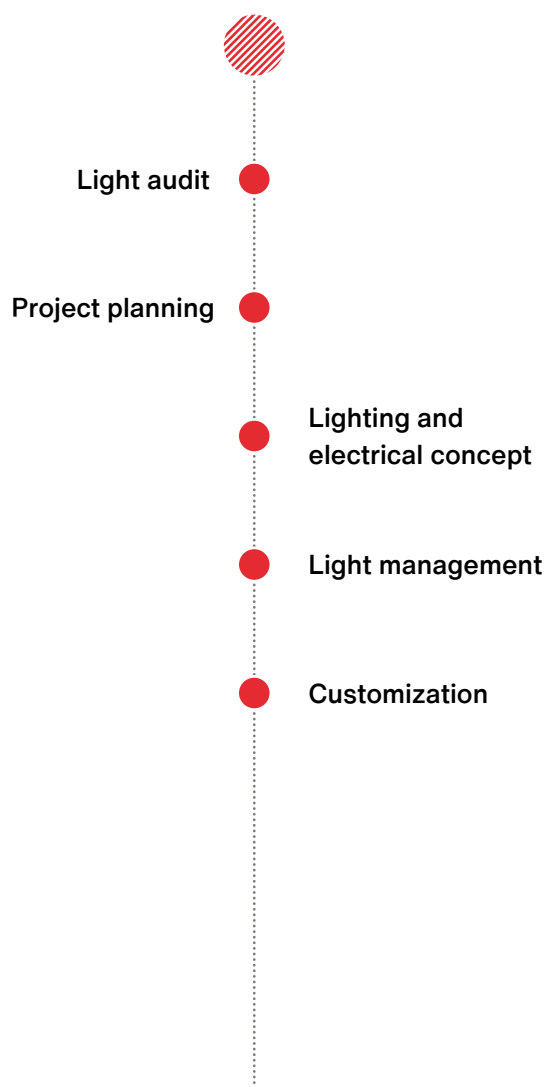
For this reason SITECO solutions include the complete spectrum of services, ranging from planning and project management to the financing and operation of your system.

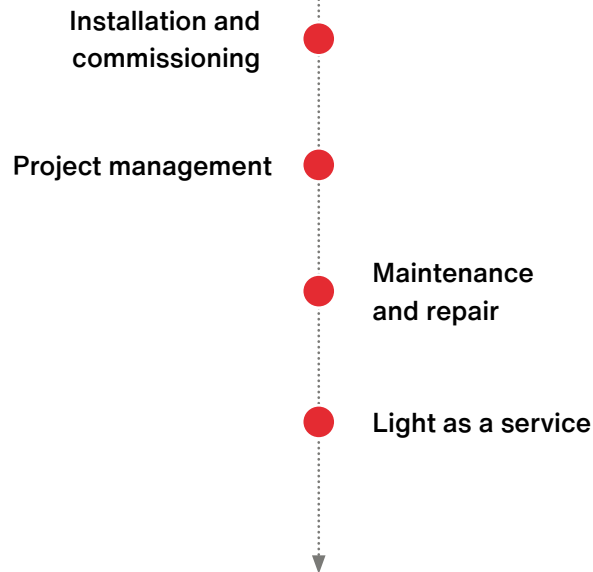
SITECO assumes responsibility for your light.

Complex is fine. But not complicated.

Whether functional lighting or complex lighting solutions – each project is individual and depends on the lighting requirements, the existing conditions and the architectural demands. SITECO supports you in defining these parameters and converting them into an overall concept. We also speak your language – putting complex technologies into plain words. This is how we make sure that your specific requirements are taken into account and successfully implemented in the project.

SITECO – the planning and development partner for your lighting solution.





Your time and your budget are not infinite.

Modern lighting systems not only require precise planning but also precise implementation. This often results in high organizational and coordination effort – which should not result in a decision against the project. Concerns about high investment costs should also not hinder project progress. The systematic modernization of lighting systems usually pays for itself through lower operating costs.

We have a network of reliable partners ranging from installers to programmers to provide you with turnkey solutions. We also offer you individual financing solutions, for example monthly installments or individual leasing contracts. You decide whether CAPEX or OPEX and whether we take over your maintenance at the same time.

SITECO guarantees the success of your project.

Contact.

Siteco GmbH

Georg-Simon-Ohm-Str. 50
83301 Traunreut
Germany
Tel. +49 8669 330
info@siteco.de

www.siteco.com

Technical support

Tel. +49 8669 338 44
technicalsupport@siteco.de

Team Retail.

Werner Rentschler

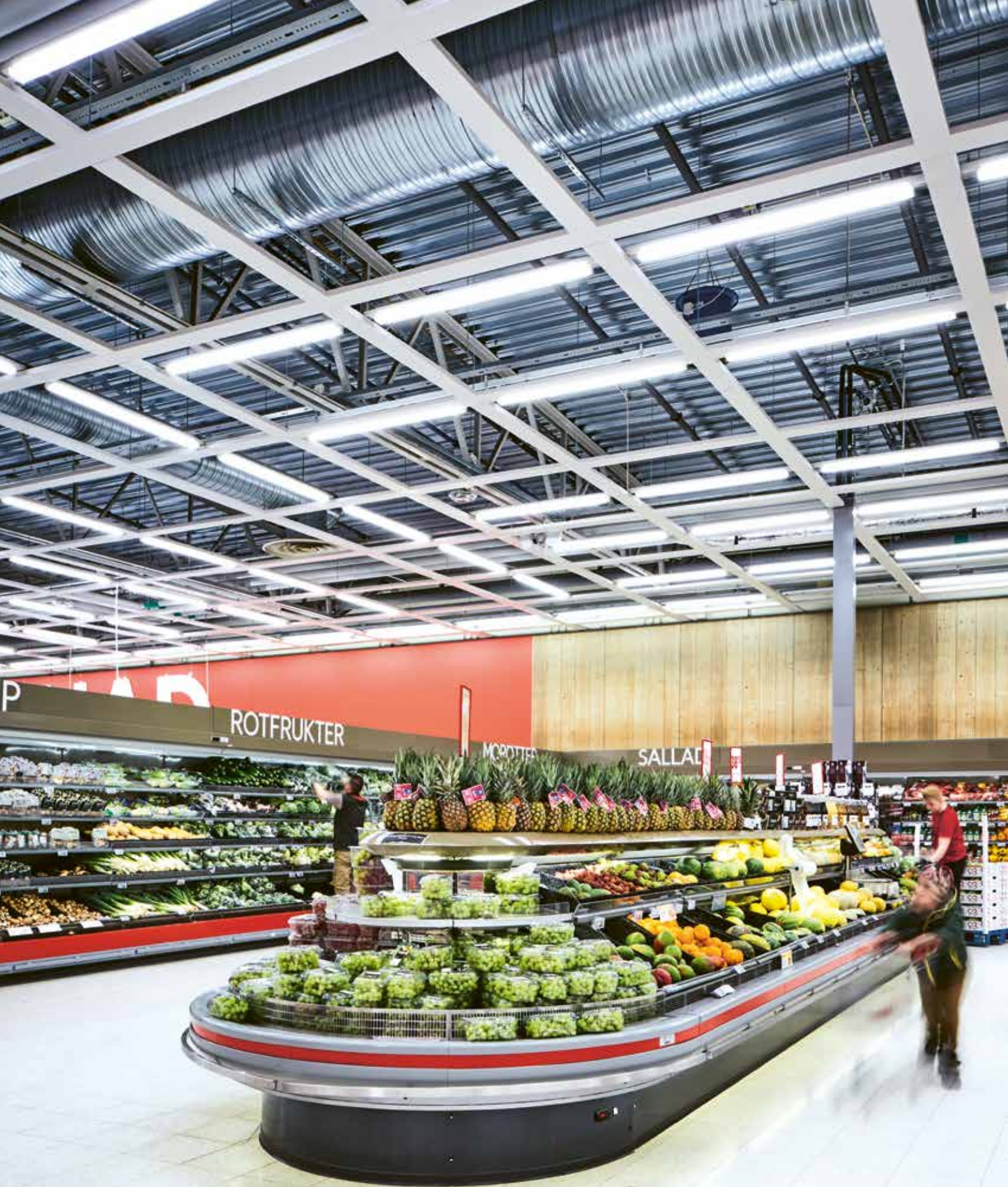
Head of Product Management
Retail
Tel. +49 8669 335 35
w.rentschler@siteco.de

For reasons of readability, the brochure largely dispenses from using gender-specific formulations.

If personal designations are only provided in masculine form they refer to persons of every gender.

Order number 810P010GB | SITECO Marketing 02.2020 | Technical modifications and errors reserved.





Project: ICA Maxi, Jönköping, Sweden

Products: Modario® trunking system, Apollon®, Monsun® 2

