



© Mark Seelen for de Winder

Silica[®]

The flexible linear system for discreet lighting design in office lighting.

www.siteco.com

siteco

Shaping with light

Impressive design and innovative lighting technology: Silica® stands for flexible lighting solutions in architectural surroundings, allowing you to use light as a special design element. The highly efficient lighting technology not only illuminates computer screen workplaces optimally, it ensures soft lighting and creates a pleasant atmosphere with its slightly frosted cover. Thanks to its individual configurability, large areas of a building can be uniformly and efficiently fitted with a single lighting solution. Silica® – Shaping with light.

At a glance

- Light line luminaire in two lengths: 1,440 and 2,880 mm
- Recessed, surface and suspended mounting
- Symmetrical and asymmetrical light distribution
- Direct and indirect light
- Compact design: 64 x 64 mm
- Optical covers: frosted (UGR ≤ 19) and opal uniform diffuser (UGR ≤ 25)



Silica® offers maximum flexibility:

Use it to illuminate offices, foyers, corridors and prestigious areas elegantly and in line with standards.



Highly efficient lighting technology

All-round flexibility

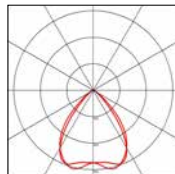
Silica® can be used in a host of different applications thanks to its high luminous flux and wide range of models. It is ideal for illuminating workplaces with its frosted optical cover with $UGR \leq 19$ and for optimally lighting areas such as foyers and corridors with its opal, uniform diffuser with $UGR \leq 25$.

The available light distributions are also highly flexible: the hybrid optical system of linear lens and micro-reflector is available with symmetrical light distribution and as a wallwasher. As a pendant luminaire, it comes with an indirect lighting component, making Silica® ideal for a number of different spaces in a building.

Light distributions

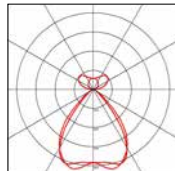
Direct

4,000 K ($UGR \leq 19$)
 4,510 lm / 28 W (1,440 mm)
 9,910 lm / 60 W (2,880 mm)



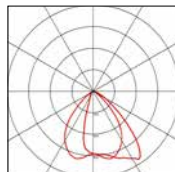
Direct and indirect

4,000 K ($UGR \leq 19$)
 6,440 lm / 43 W (1,440 mm)
 14,160 lm / 93 W (2,880 mm)



Direct asymmetrical

4,000 K
 4,290 lm / 28 W (1,440 mm)



Colors



White
 (powder coated)



Anodized
 Aluminum

Design

Adjustable mounting brackets

Indirect LED module

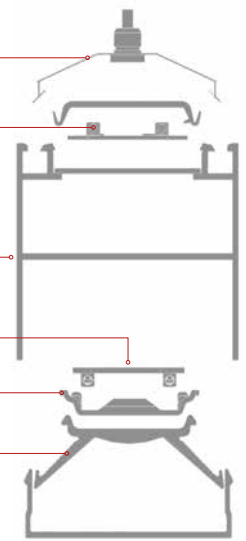
Aluminum profile frame

Direct LED module

Micro-reflector

Linear lens

Optical cover



Available lengths



1,440 mm



2,880 mm

Individualization options: e.g. additional lengths available on request.



At a glance

- Rated service life: 50,000 h (L85/B50)
- Efficiency: up to 164 lm/W
- ECG integrated in housing
- High luminous flux with standard glare reduction



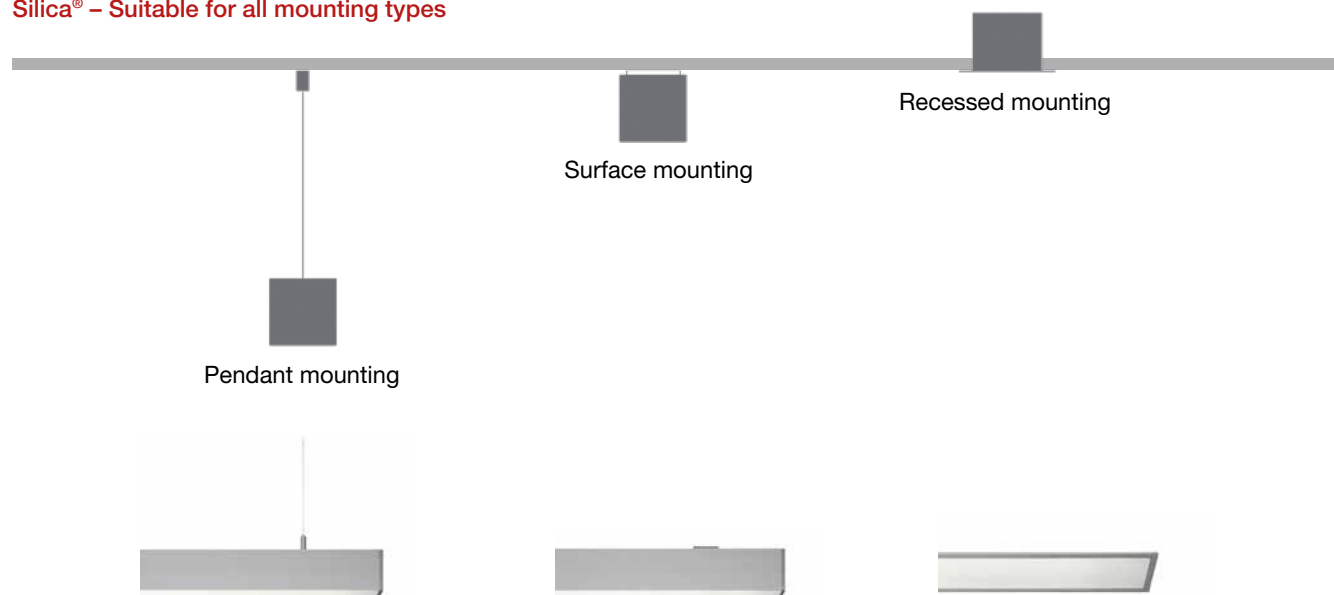
Light for entrance areas, corridors and more

Would you like to light buildings in complete harmony? Thanks to its linear and compact design, Silica® blends elegantly into architectural surroundings. Silica® comes with an opal cover in $UGR \leq 25$ for uniform and pleasantly bright lighting of areas without computer screen workplaces.

Simple and fast mounting:

- **Clip-in mount:** can be simply snapped in thanks to pre-mounted fixing clamps on the ceiling
- **Adjustable fixing points:** flexible adaptation of mounting and fixing points to local building requirements

Silica® – Suitable for all mounting types



Lighting for offices and seminar rooms

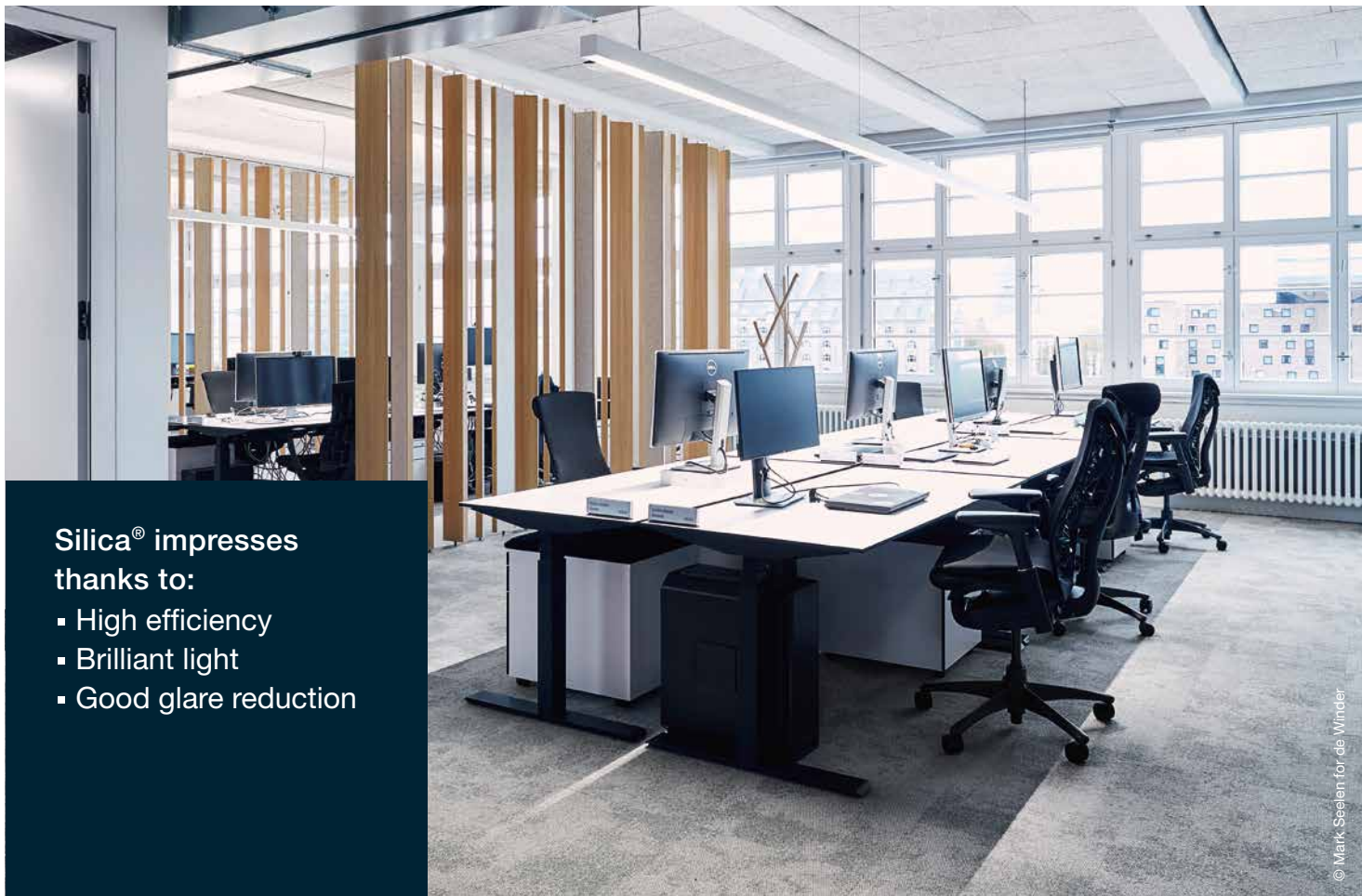
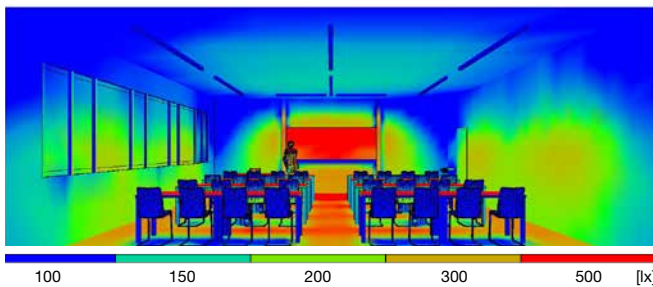
With $UGR \leq 19$, Silica® offers optimum glare reduction and excellent viewing comfort at computer screen workplaces. What's more, this effect is enhanced with an indirect light component as a pendant luminaire. The light emitted upwards is reflected back by the ceiling, bathing the room in bright and pleasant, glare-free light. The highly efficient lighting technology with up to 164 lm/W furthermore ensures very low power consumption values.

At a glance

- Optimum glare reduction: $UGR \leq 19$
- Various light distributions:
 - symmetrically for computer screen workplaces and more
 - asymmetrically for wall and board lighting (recessed and surface-mounted)
- Available as a pendant luminaire with indirect light component
- Integration in building control and light management systems based on DALI functionality

Simply class

With optimum glare reduction and two light distributions, the Silica® also impresses when it comes to lighting classrooms.



Silica® impresses thanks to:

- High efficiency
- Brilliant light
- Good glare reduction



Siteco GmbH
Georg-Simon-Ohm-Straße 50
83301 Traunreut, Germany
Tel +49 8669 33-0
Fax +49 8669 33-397

www.siteco.com

Customer Service
Tel +49 8669 33-844

