



SiCOMPACT[®] LED

Efficient lighting for surfaces and areas.

www.siteco.com

siteco



Elegant, easy to handle, simple

SiCOMPACT® – industrial-look design comes together with state-of-the-art technology. The new range of floodlights sets new standards for a wide variety of lighting tasks around buildings.

SiCOMPACT® features maximum reliability, robustness, ease of installation and quality. High quality workmanship, state-of-the-art lighting technology and a high IP66 protection rating make the floodlight family the first choice for standard lighting tasks outdoors, while simultaneously ensuring economical, low-maintenance and energy-efficient lighting solutions.

The possibilities for application are highly diverse – buildings, facades and advertising hoardings as well as utilisation planes and parking lots are illuminated in the right light. The robust, screwless housing of diecast aluminium, UV-resistant polyester coating, safety glass cover and special sealing system (sealed for life/IP 66) easily withstand temperature fluctuations, variable humidity and tough ambient conditions.

The lighting technology generates asymmetric light distribution on the utilisation plane with an illuminated surface up to 5 times larger. Thanks to pre-assembled brackets and connection cables the SiCOMPACT® family is mounted quickly and simply, thereby offering ideal pre-conditions for replacing conventional projectors.



A real multi-talent in use:

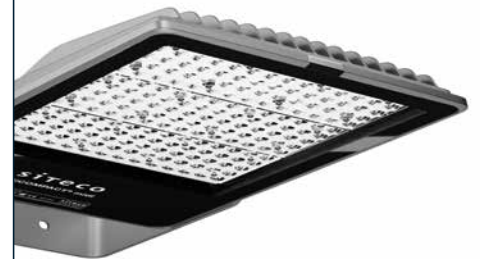
- Surfaces and areas in trade and commerce
- Parking lots
- Worksites
- Facade and wall illumination
- Illumination of advertising panels



SiCOMPACT® micro



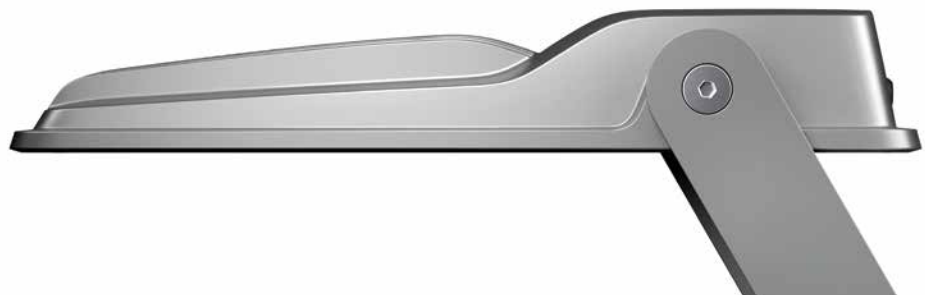
SiCOMPACT® mini



SiCOMPACT® midi

Overview of SiCOMPACT®

- Ideal refurbishment solutions for floodlights with conventional technology
- with illuminated plane up to 5 times greater, also suitable as uplights
- High flexibility in all applications due to three construction sizes and rated luminous flux from 4,000 to 23,800 lm
- Simple, quick installation with mounting bracket and pre-assembled connection cable
- Efficient operation with up to 120 lm/W and asymmetric narrow light distribution
- Reliable technology with long service life (60,000 hrs. L70/B50)
- Robust housing and ESD-protected LED module (sealed for life), IP66, IK08, dustproof and tested vibration stability with 250,000 strikes
- ENEC-certified



Simple, rapid selection – the SiCOMPACT® rule-of-thumb calculation

Mounting height (m)	Area (with PL32 light distribution)			micro 35W	mini 65W	mini 130W	midi 200W
	Width	Depth	Surface m ²	Illuminance (lux) at U0=0.25			
2.5	7.5	5.0	38	25	49	96	158
3.0	9.0	6.0	54	17	34	67	110
3.5	10.5	7.0	74	12	24	47	77
4.0	12.0	8.0	96	9	18	38	62
4.5	13.5	9.0	122	6	12	25	42
5.0	15.0	10.0	150	5*	10*	20*	34
5.5	16.5	11.0	182		9	17	28
6.0	18.0	12.0	216		7	15	24
6.5	19.5	13.0	254		6	12	20
7.0	21.0	14.0	294		5*	11	18
7.5	22.5	15.0	338			10*	16
8.0	24.0	16.0	384			9	14
8.5	25.5	17.0	434			8	13
9.0	27.0	18.0	486			7	12
9.5	28.5	19.0	542			6	11
10.0	30.0	20.0	600			5*	10*

*compliant to standard DIN EN 12464-2 for car park lighting

SiCOMPACT®

asymmetrical distribution (light distribution PL32), IP66, CRI >70, service life up to 60,000 h (L70/B50 at T_a +25°C)

Variants	K	lm	W	ECG	EAN	MLFB
SiCOMPACT® micro	4000	4000	35	ON/OFF	4058352136980	5XA7561A2K21
SiCOMPACT® mini	4000	7700	65	ON/OFF	4058352137000	5XA7571B2K21
SiCOMPACT® mini	4000	15.200	130	ON/OFF	4058352137024	5XA7571C2K21
SiCOMPACT® midi	4000	23.800	200	ON/OFF	4058352137048	5XA7581D2K21

Energy efficiency class included LED modules A++, A+, A. LED modules not replaceable.



Siteco GmbH
Georg-Simon-Ohm-Straße 50
83301 Traunreut, Germany
Tel +49 8669 33-0
Fax +49 8669 33-397

Customer Service
Tel +49 8669 33-844

www.siteco.com

