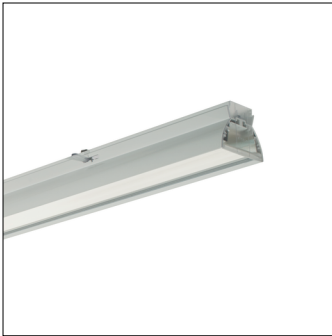


Order No. OSRAM: 4050737970677 | Order No. Siteco: 5TR212D2V4080

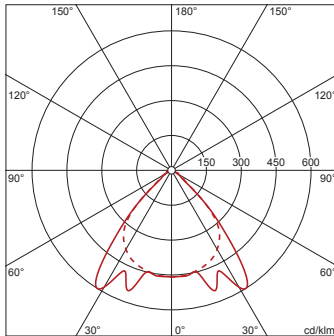
Product description: Mod-RS,LI,sym,wd,LED8000lm840,DALI,wh



Modario® RSLuminaire insert, length: 1.495mm, width: 75mm, LED light colour: 840, control gear: DALI, control gear: ECG DALI, with plug, 5-pole, with phase selection, mains connection: 230V, AC/DC, 0/50..60Hz, primary anti-glare with High Definition Primitives (HDP®), primary optical cover: prismatic diffuser, of PMMA, light emission: direct distribution, primary light characteristic: symmetric, protection rating (complete): IP20, protection rating (LED compartment): IP40, insulation class (complete): insulation class I (protective earthing), certification: CE, ENEC, VDE, permissible ambient temperature for indoor applications: -25..+50°C, corresponds to IFS (International Featured Standards) requirements for safety and quality in the food industryreducing of maximum allowable ambient temperature of 5°C with ceiling mounting, packaging unit: 1 piece

4050737970677  
5TR212D2V4080

LED 4000K / CRI ≥ 80    ϕ<sub>N</sub> 8000 lm



Lamps: LED  
Wt. (kg): 3.0  
GTIN (EAN): 4050737970677

**siteco** AN OSRAM BUSINESS    5TR212D2V4080

The luminaire contains built-in LED lamps

A++

A+

A

B

C

D

E

} LED

X

The LED-lamps cannot be changed in the luminaire

874/2012

